

Bridge Condition

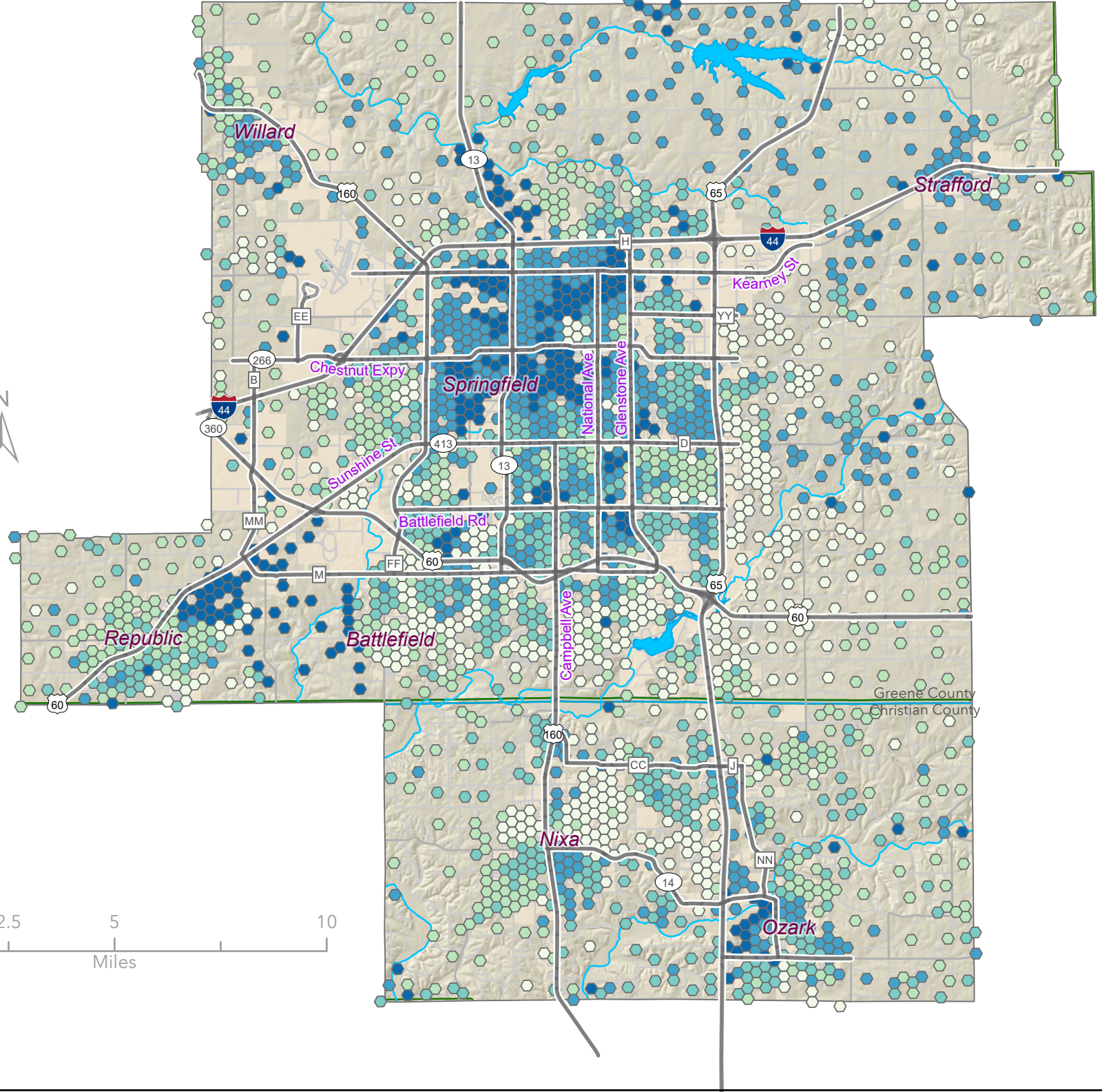
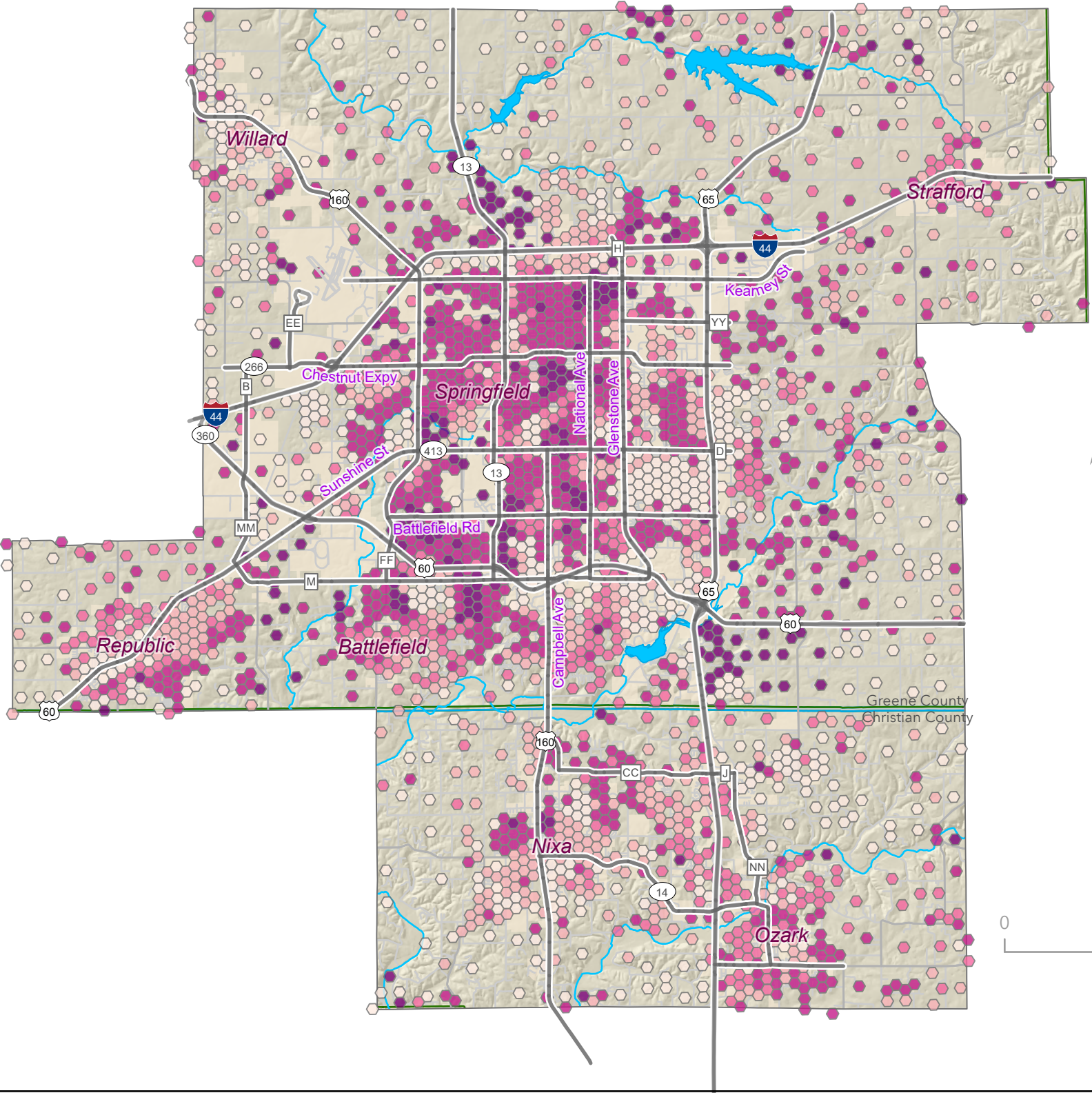
- Bridge Condition Rating
- Poor (4 points)
 - Fair (2 points)
 - Good (0 points)



Data Source: 2024 National Bridge Inventory, Provided by MoDOT SW District Office.

Percent Minority Population

Percent Low-Income Population



0 2.5 5 10
Miles

Percent Racial Minority

- 25.4% - 100%
- 12.5% - 25.3%
- 9.2% - 12.4%
- 6% - 9.1%
- 0% - 5.9%



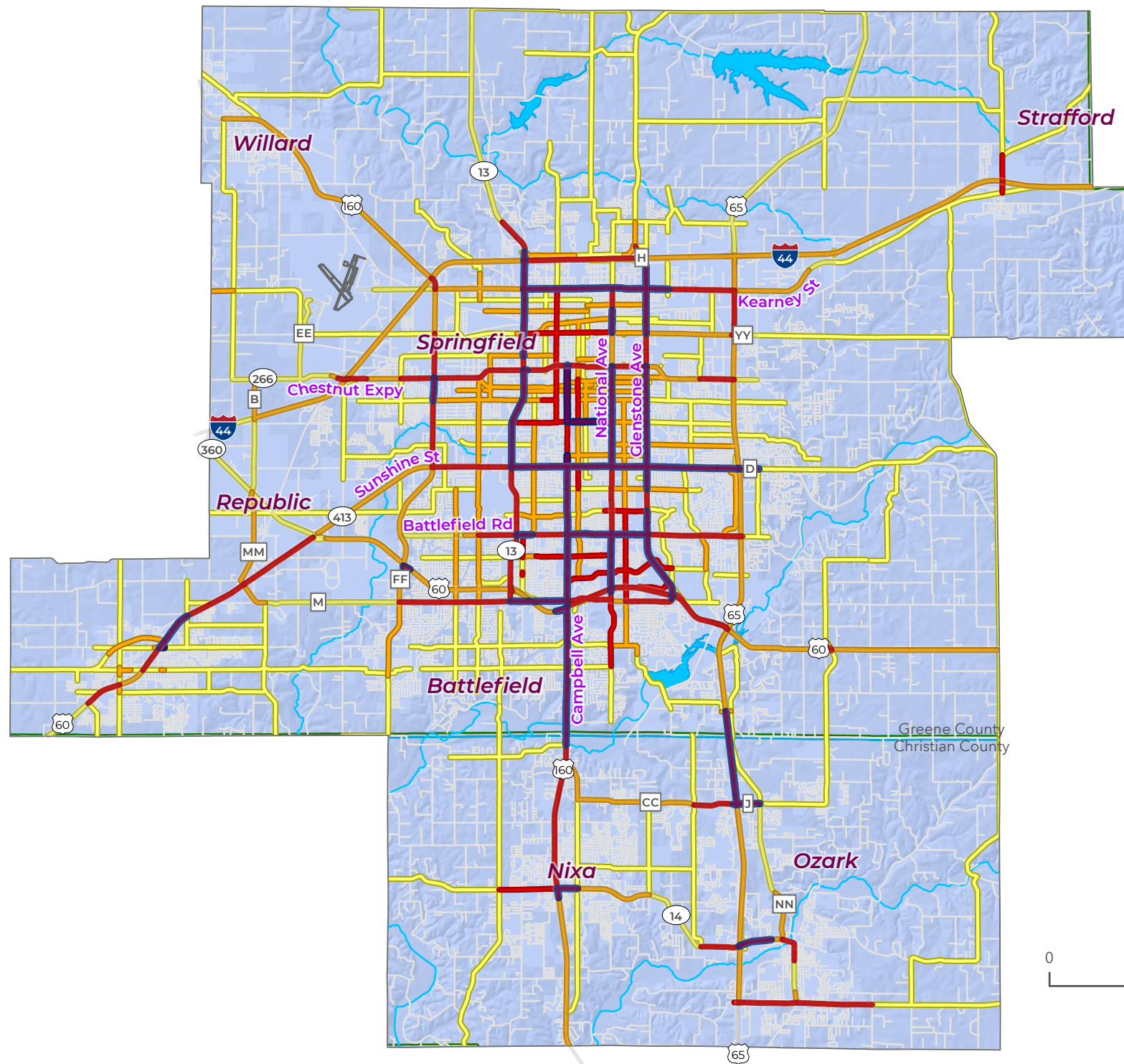
Data Sources: 2020 Decennial Census, American Community Survey 5-Year Estimates 2018 - 2022, & 2021 - 2023 OTO Area Building Permits.

Minority Hex Bin Average: 12.4%
Low-Income Hex Bin Average 14.8%

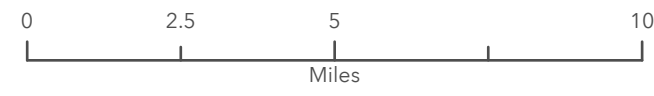
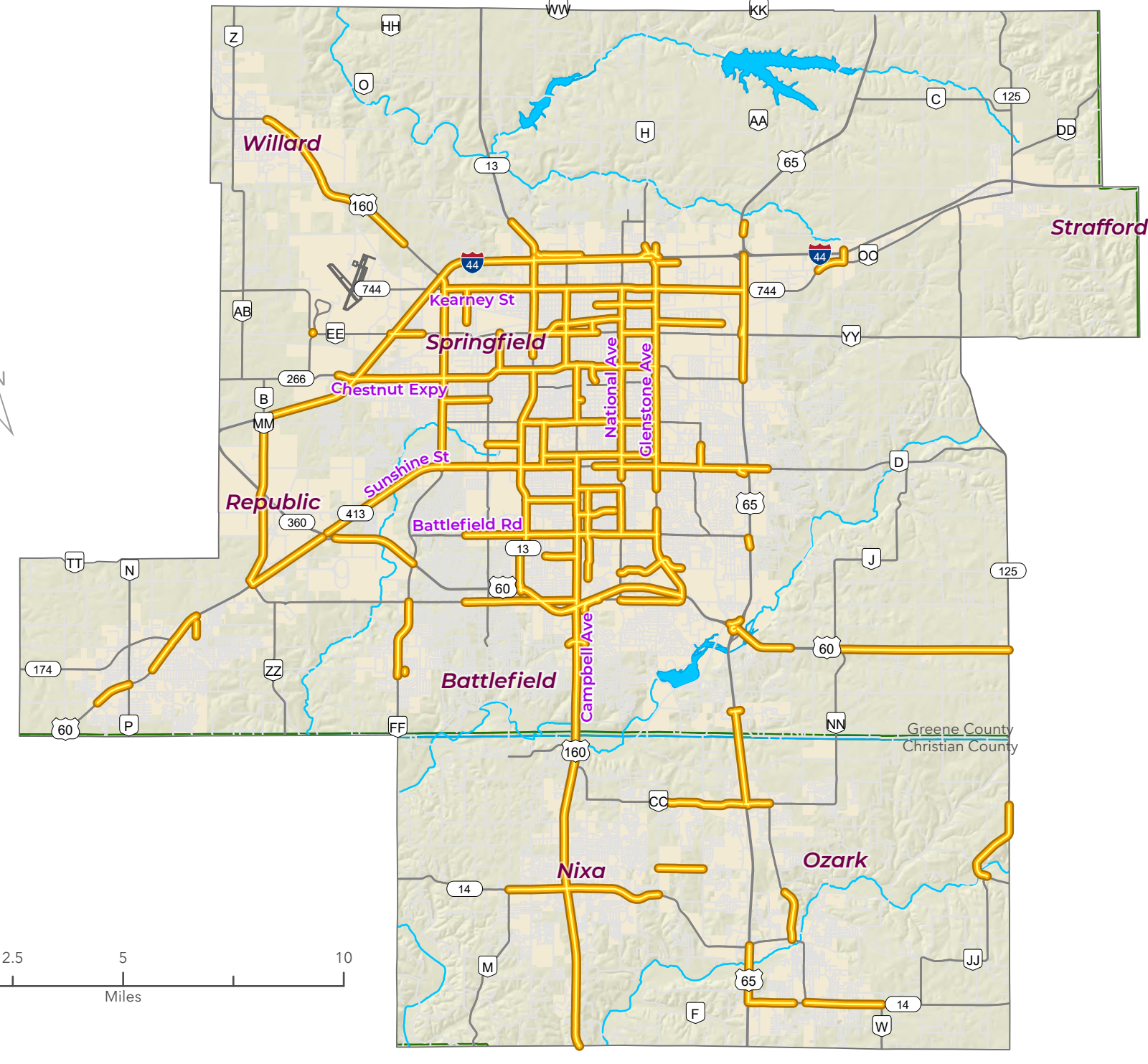
Percent Below Poverty

- 30.1% - 100%
- 14.9% - 30%
- 8.7% - 14.8%
- 4.9% - 8.6%
- 0% - 4.8%

Crashes per Mile 2019 - 2023



High Injury Network



- Crashes per Mile
- █ 176.8 - 608.4 (15 points)
 - █ 76.0 - 176.7 (10 points)
 - █ 32.3 - 75.9 (5 points)
 - █ 0.0 - 32.2 (0 points)

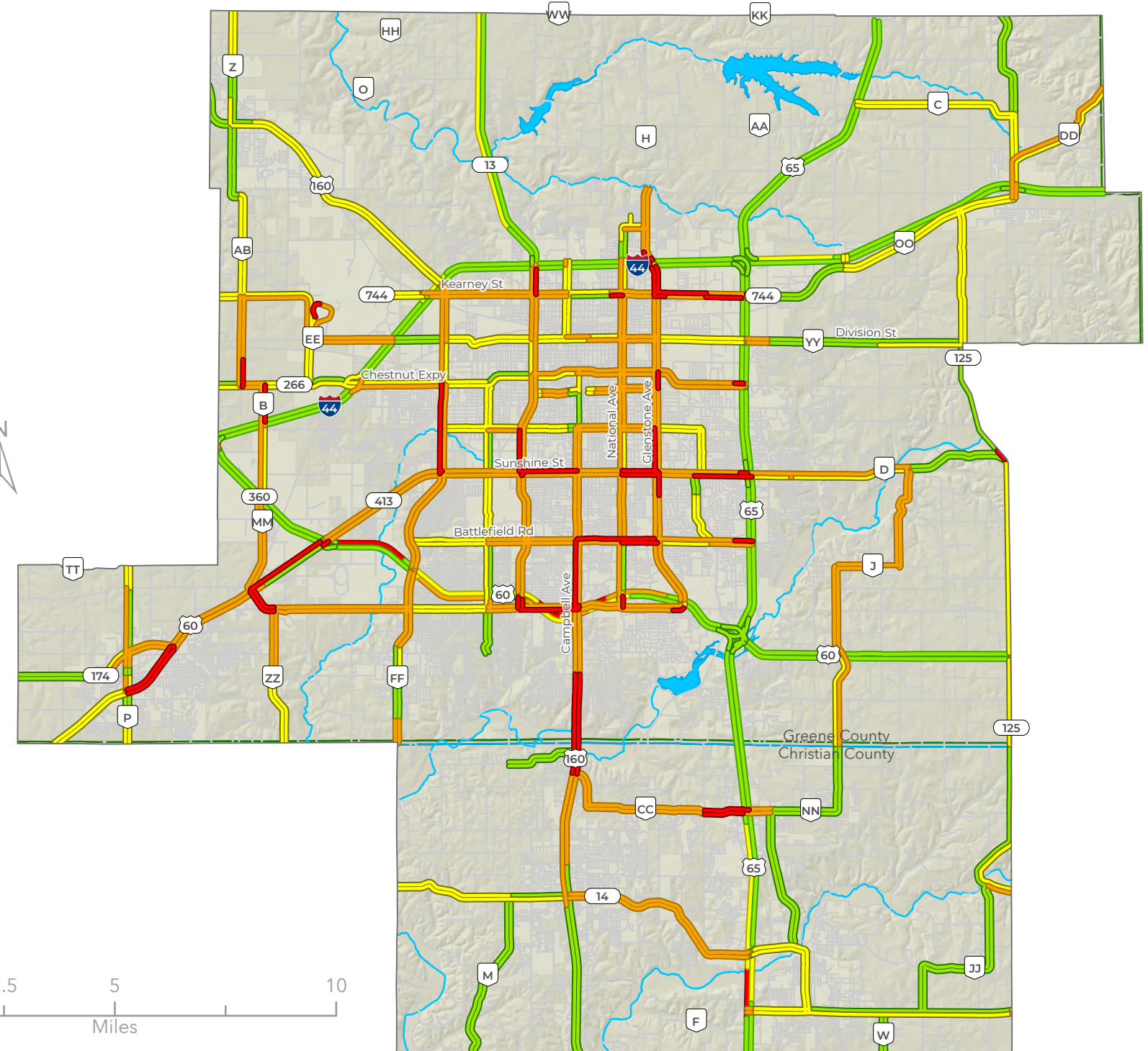
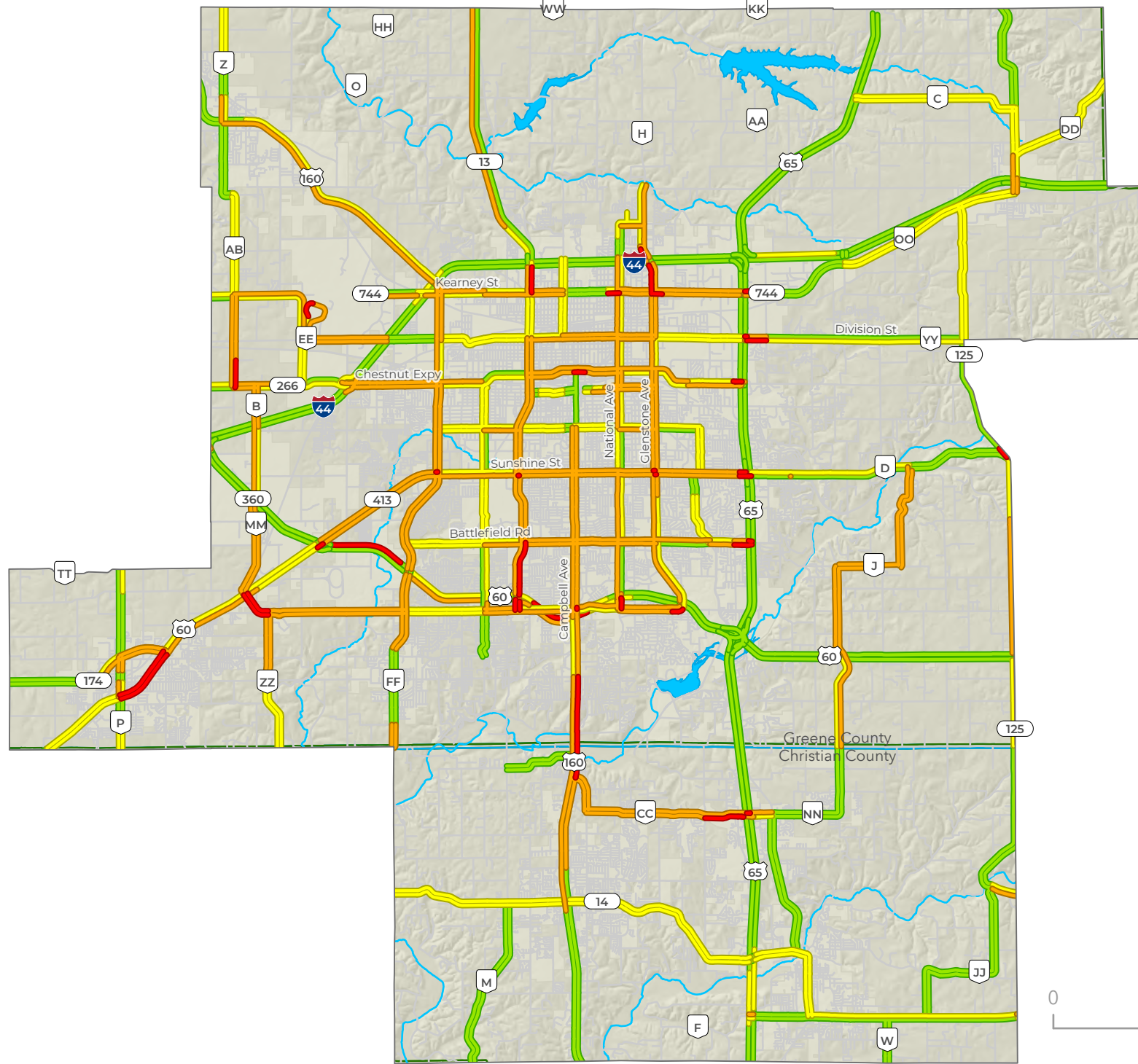


Data Sources: MoDOT Crash Statistics Map. Crashes per mile is based on total crashes from 2019 to 2023. The High Injury Network is based on fatal and serious injury crashes from 2018 - 2022. Segments with 2 or more fatal or serious injury crashes per mile are included in the High Injury Network.

- █ High Injury Network (10 points)

AM Travel Delay 2024

PM Travel Delay 2024



Arterial & Expressway Scores

- █ > or = 20 mph below Speed Limit (14 points)
- █ 10.0 - 19.9 mph below Speed Limit (10 points)
- █ 5.0 - 9.9 mph below Speed Limit (4 points)
- █ < or = 4.9 mph below Speed Limit (0 points)

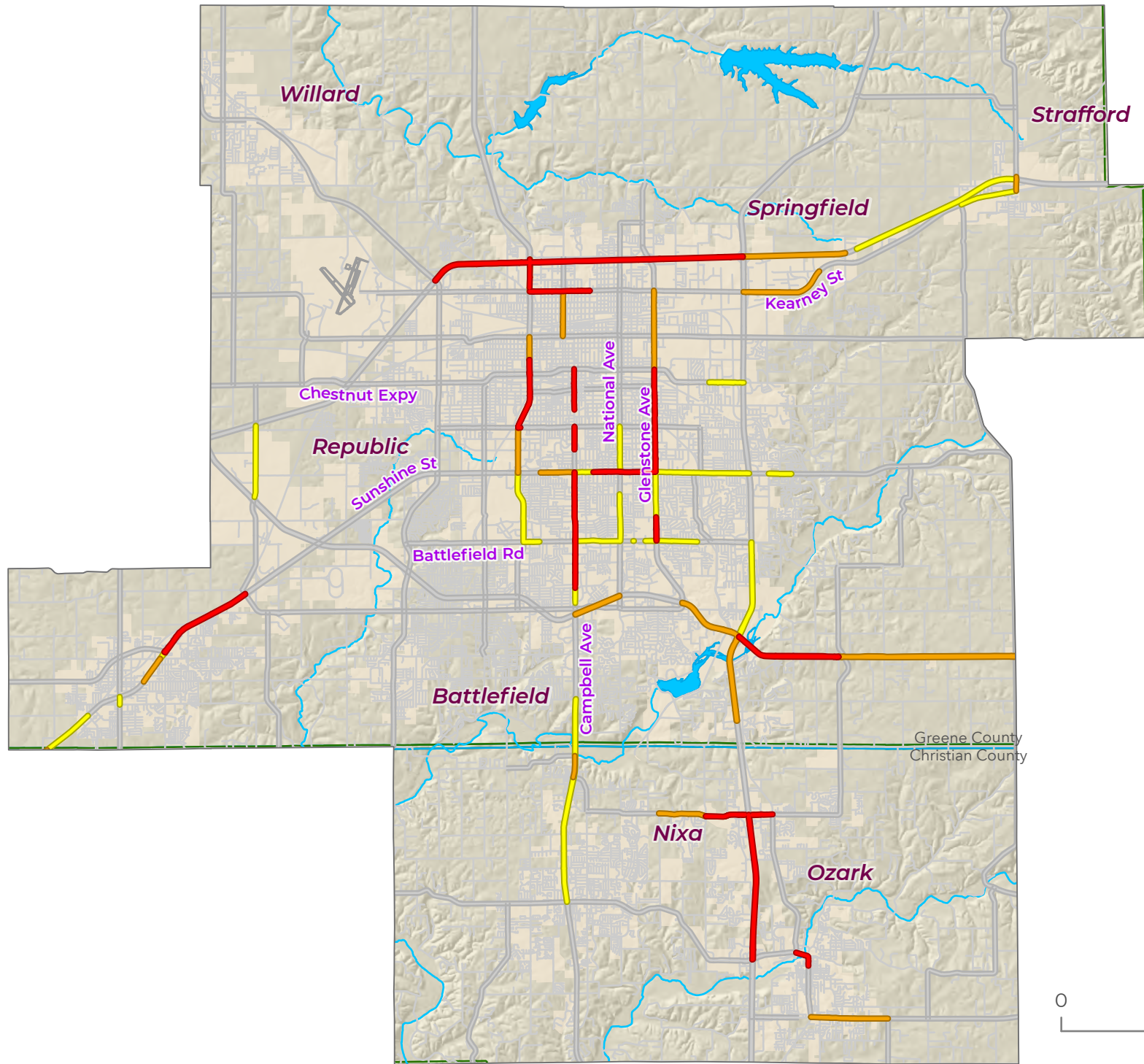


Data Source: INRIX NPMRDS & HERE speed data for business days during March, April, & May 2024 from 7:15 - 8:15 am, 5:00 - 6:00 pm, and 5:30 - 6:30 pm.

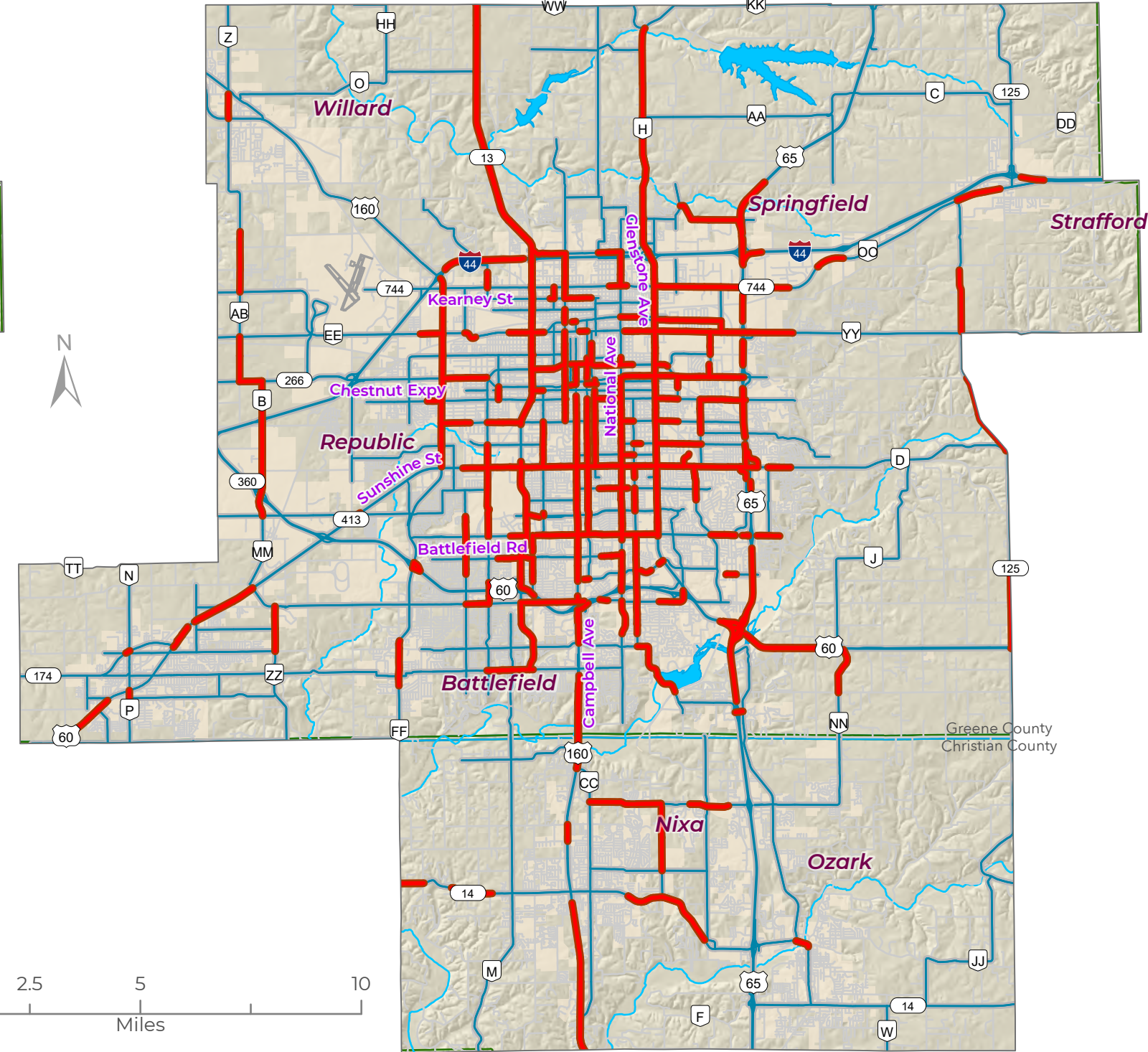
Freeway Scores

- █ > or = 10.0 mph below Speed Limit (14 points)
- █ 5.0 - 9.9 mph below Speed Limit (10 points)
- █ 0.1 - 4.9 mph below Speed Limit (4 points)
- █ < or = 0 mph below Speed Limit (0 points)

Current Roadway Volume-to-Capacity Ratios



Future Volume-to-Capacity Ratios



Current Volume/Capacity Ratio

- 1.01 - 1.45 (14 points)
- 0.93 - 1.00 (11 points)
- 0.87 - 0.92 (7 points)
- 0.02 - 0.86 (0 points)



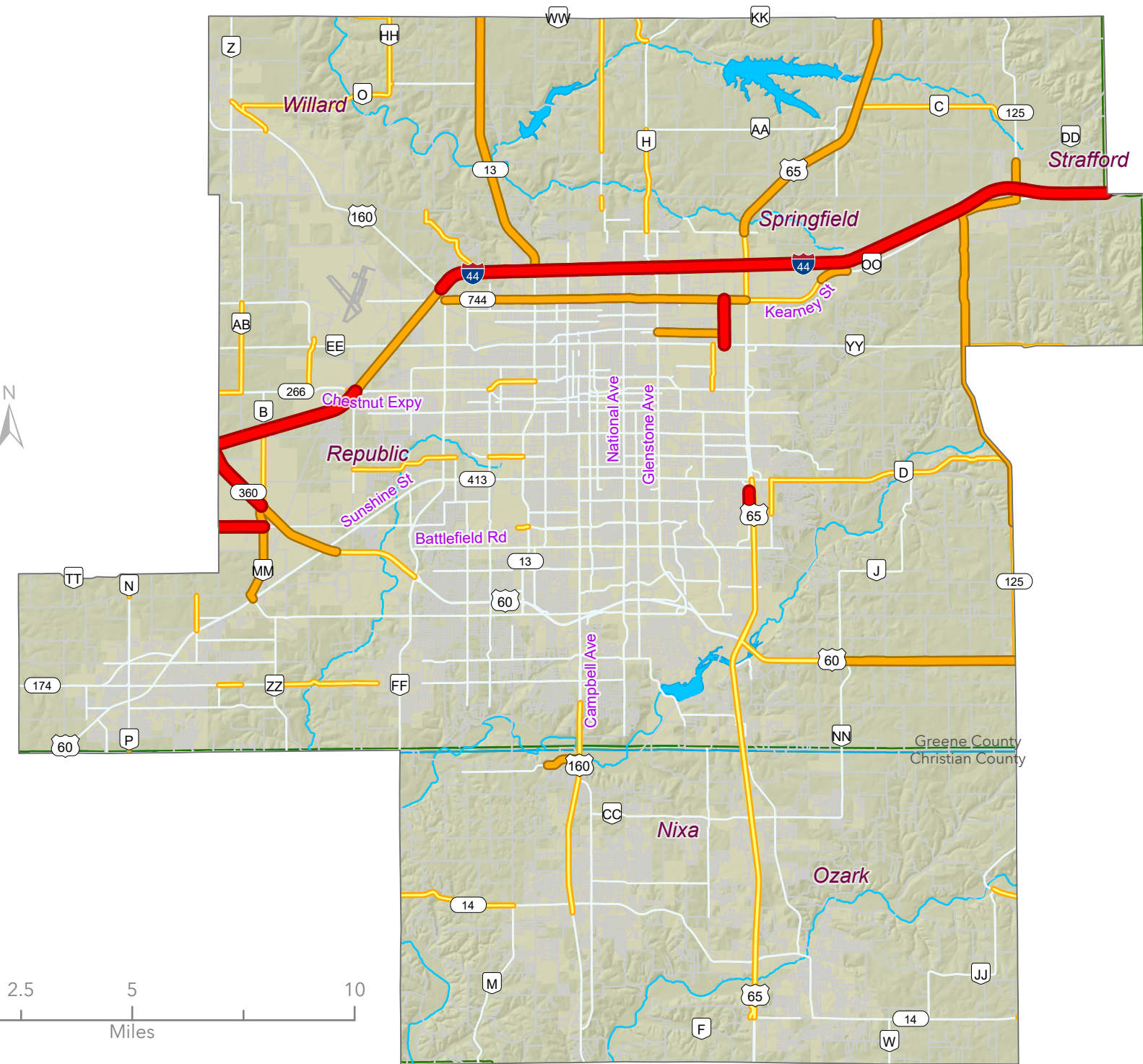
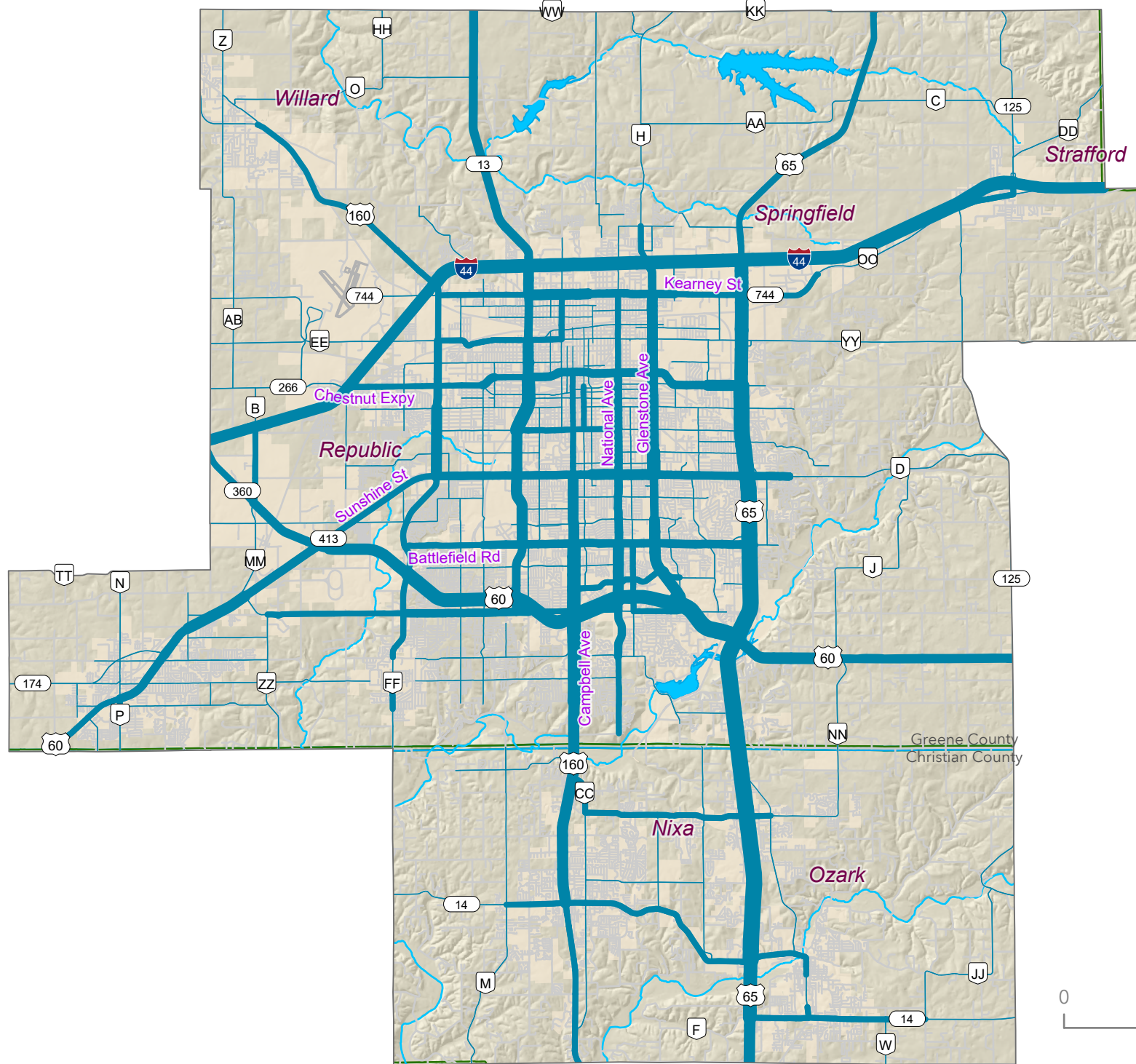
Data Sources: 2023 MoDOT AADT by Vehicle Type & the OTO 2045 Travel Demand Model.

2045 Volume/Capacity Ratio

- > 0.86 (4 points)
- 0.0 - 0.86 (0 points)

2023 Average Annual Daily Traffic

Percent Freight Traffic



Roadway Average Daily Volume

- █ 65,001 - 83,078 (15 points)
- █ 40,001 - 65,000 (10 points)
- █ 30,001 - 40,000 (6 points)
- █ 20,001 - 30,000 (3 points)
- █ 10,001 - 20,000 (1 point)
- █ 267 - 10,000 (0 points)



Freight % of Daily Traffic

- █ 20.1% - 35% (3 points)
- █ 15.1% - 20% (2 points)
- █ 10.1% - 15% (1 point)
- █ 0% - 10% (0 points)

Data Source: 2023 AADT by Vehicle Type,
MoDOT Central Office