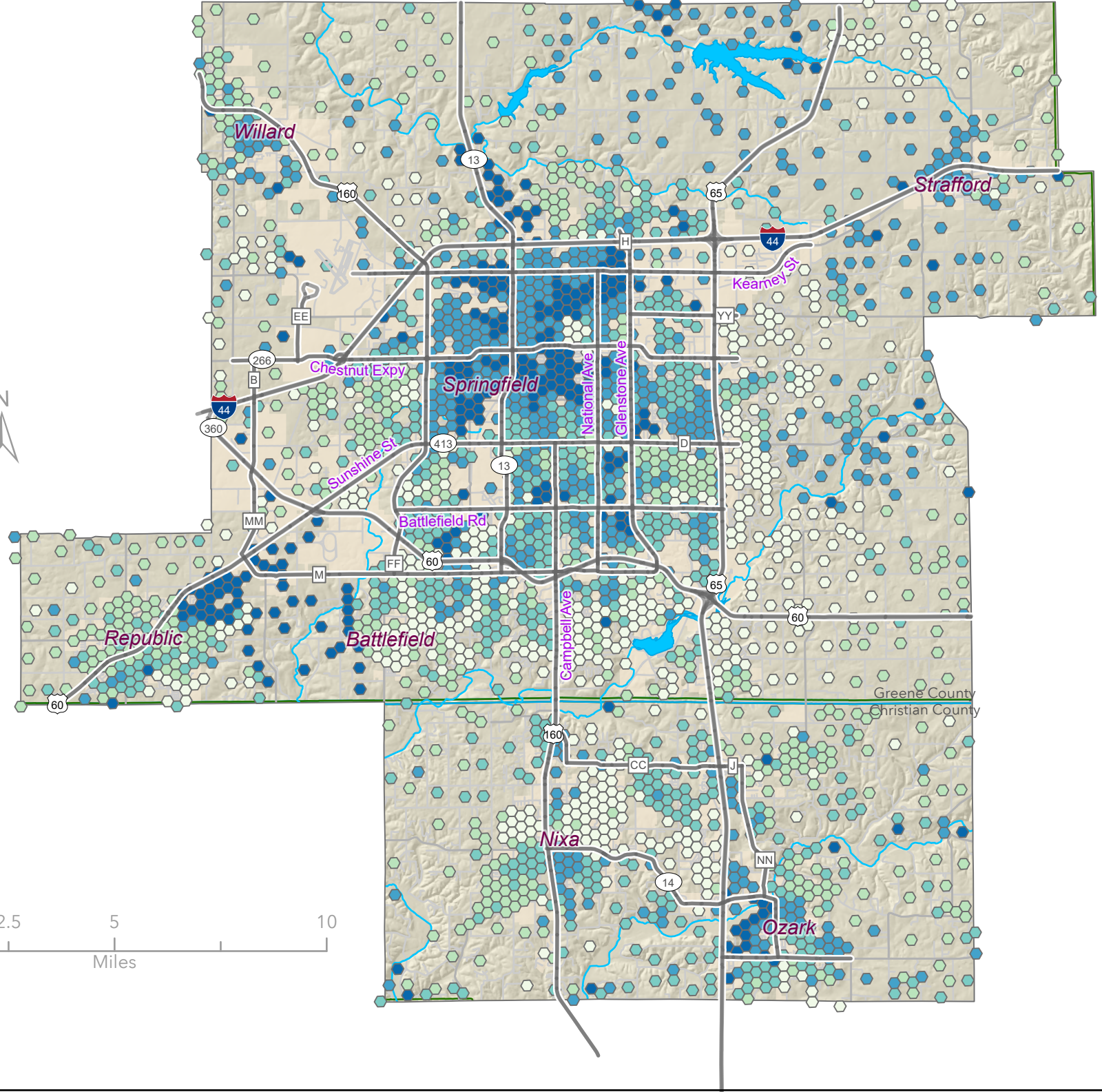
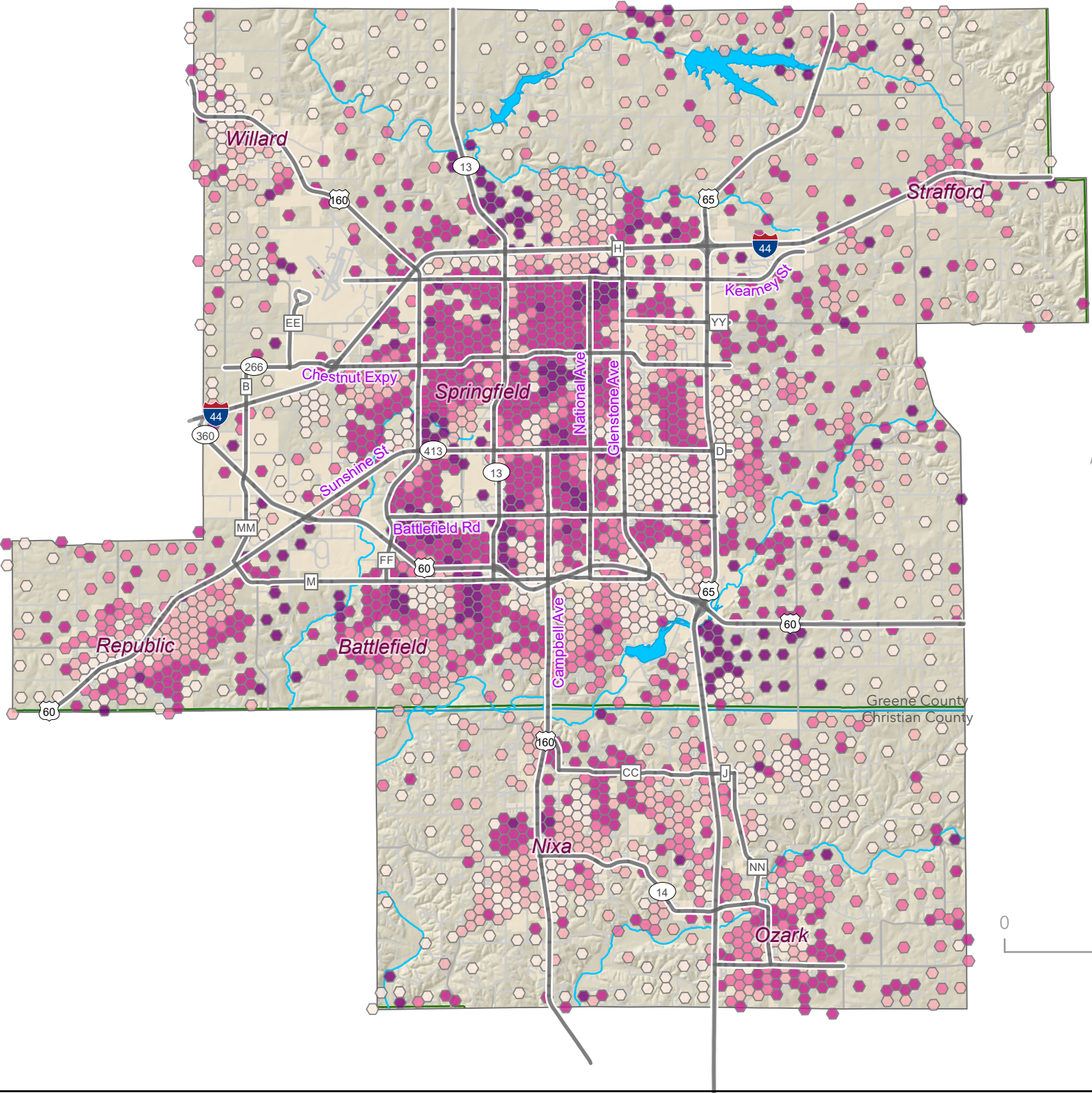


Percent Minority Population

Percent Low-Income Population



0 2.5 5 10
Miles

Percent Racial Minority

- 25.4% - 100%
- 12.5% - 25.3%
- 9.2% - 12.4%
- 6% - 9.1%
- 0% - 5.9%



Data Sources: 2020 Decennial Census, American Community Survey 5-Year Estimates 2018 - 2022, & 2021 - 2023 OTO Area Building Permits.

Minority Hex Bin Average: 12.4%
Low-Income Hex Bin Average 14.8%

Percent Below Poverty

- 30.1% - 100%
- 14.9% - 30%
- 8.7% - 14.8%
- 4.9% - 8.6%
- 0% - 4.8%