

Destination 2045
Amendment 4

Revenue Estimates through 2045

Revenue Directed to Roadway, Bicycle, Pedestrian, ITS, Operations, and Maintenance Projects

93: Non-Transit Revenue Estimates 2022-2045

	2022	2023	2024	2025	2026
MoDOT Directed Revenue	\$59,027,891	\$76,779,044	\$66,592,385	\$165,730,000	\$58,312,000
Cost Share Projected Revenue	\$6,000,000	\$1,500,000	\$1,500,000	\$1,500,000	\$1,500,000
Suballocated STBG	\$7,274,284	\$7,882,538	\$7,930,989	\$8,089,609	\$8,251,401
Suballocated TAP/CRP	\$2,312,656	\$2,312,656	\$2,312,656	\$2,312,656	\$2,358,909
Local/Other	\$25,795,423	\$8,708,407	\$2,560,911	\$2,600,566	\$2,652,578
TOTAL	\$100,410,254	\$97,182,645	\$80,896,941	\$180,232,831	\$73,074,888

	2027	2028	2029	2030	2031
MoDOT Directed Revenue	\$55,390,100	\$55,944,001	\$56,503,441	\$57,068,475	\$57,639,160
Cost Share Projected Revenue	\$1,500,000	\$1,500,000	\$1,500,000	\$1,500,000	\$1,500,000
Suballocated STBG	\$8,416,429	\$8,584,758	\$8,756,453	\$8,931,582	\$9,110,214
Suballocated TAP/CRP	\$2,406,087	\$2,454,209	\$2,454,209	\$2,454,209	\$2,454,209
Local	\$2,705,629	\$2,759,742	\$2,802,665	\$2,846,448	\$2,891,106
TOTAL	\$70,418,246	\$71,242,710	\$72,016,768	\$72,800,714	\$73,594,689

	2032	2033	2034	2035	2036
MoDOT Directed Revenue	\$58,215,552	\$58,797,707	\$59,385,684	\$59,979,541	\$60,579,337
Cost Share Projected Revenue	\$1,500,000	\$1,500,000	\$1,500,000	\$1,500,000	\$1,500,000
Suballocated STBG	\$9,292,418	\$9,478,266	\$9,667,832	\$9,861,188	\$10,058,412
Suballocated TAP/CRP	\$2,503,293	\$2,503,293	\$2,503,293	\$2,503,293	\$2,503,293
Local	\$2,948,928	\$2,995,390	\$3,042,781	\$3,091,120	\$3,140,426
TOTAL	\$74,460,191	\$75,274,657	\$76,099,590	\$76,935,143	\$77,781,468

	2037	2038	2039	2040	2041
MoDOT Directed Revenue	\$61,185,130	\$61,796,981	\$62,414,951	\$63,039,101	\$63,669,492
Cost Share Projected Revenue	\$1,500,000	\$1,500,000	\$1,500,000	\$1,500,000	\$1,500,000
Suballocated STBG	\$10,259,580	\$10,464,772	\$10,674,067	\$10,887,549	\$11,105,300
Suballocated TAP/CRP	\$2,553,359	\$2,553,359	\$2,553,359	\$2,553,359	\$2,553,359
Local	\$3,203,235	\$3,254,533	\$3,306,857	\$3,360,227	\$3,414,665
TOTAL	\$78,701,304	\$79,569,645	\$80,449,234	\$81,340,235	\$82,242,815

	2042	2043	2044	2045	TOTAL
MoDOT Directed Revenue	\$64,306,187	\$64,949,248	\$65,598,741	\$66,254,728	\$1,579,158,878
Cost Share Projected Revenue	\$1,500,000	\$1,500,000	\$1,500,000	\$1,500,000	\$40,500,000
Suballocated STBG	\$11,327,406	\$11,553,954	\$11,785,033	\$12,020,733	\$231,664,766
Suballocated TAP/CRP	\$2,604,426	\$2,604,426	\$2,604,426	\$2,604,426	\$59,533,423
Local	\$3,482,958	\$3,539,595	\$3,597,365	\$3,656,290	\$102,357,844
TOTAL	\$83,220,976	\$84,147,223	\$85,085,565	\$86,036,178	\$2,013,214,911

Revenue Directed to Transit Projects

94: Transit Revenue Estimates 2022-2045

	2022	2023	2024	2025	2026
FTA 5307	\$2,755,075	\$2,872,825	\$2,866,486	\$2,923,816	\$2,982,292
FTA 5310	\$307,843	\$314,000	\$320,280	\$326,686	\$333,220
FTA 5339	\$292,904	\$298,762	\$3,304,738	\$310,832	\$317,049
City Utilities Local Share	\$6,800,000	\$7,000,000	\$7,000,000	\$9,500,000	\$9,595,000
State of Missouri/Medicaid	\$146,500	\$146,500	\$146,500	\$146,500	\$149,430
Other local agencies	\$42,328	\$43,175	\$44,039	\$44,919	\$45,818
TOTAL	\$10,344,650	\$10,675,262	\$13,682,043	\$13,252,753	\$13,422,808

	2027	2028	2029	2030	2031
FTA 5307	\$3,041,938	\$3,102,777	\$3,164,832	\$3,228,129	\$3,292,692
FTA 5310	\$339,884	\$346,682	\$353,615	\$360,688	\$367,901
FTA 5339	\$323,390	\$329,857	\$336,455	\$343,184	\$350,047
City Utilities Local Share	\$9,690,950	\$9,787,860	\$9,885,738	\$9,984,595	\$10,084,441
State of Missouri/Medicaid	\$149,430	\$149,430	\$149,430	\$149,430	\$152,419
Other local agencies	\$46,734	\$47,669	\$48,622	\$49,595	\$50,586
TOTAL	\$13,592,326	\$13,764,274	\$13,938,693	\$14,115,621	\$14,298,087

	2032	2033	2034	2035	2036
FTA 5307	\$3,358,546	\$3,425,716	\$3,494,231	\$3,564,115	\$3,635,398
FTA 5310	\$375,260	\$382,765	\$390,420	\$398,228	\$406,193
FTA 5339	\$357,048	\$364,189	\$371,473	\$378,902	\$386,481
City Utilities Local Share	\$10,185,286	\$10,287,139	\$10,390,010	\$10,493,910	\$10,598,849
State of Missouri/Medicaid	\$152,419	\$152,419	\$152,419	\$152,419	\$155,467
Other local agencies	\$51,598	\$52,630	\$53,683	\$54,756	\$55,852
TOTAL	\$14,480,156	\$14,664,858	\$14,852,235	\$15,042,331	\$15,238,239

	2037	2038	2039	2040	2041
FTA 5307	\$3,708,106	\$3,782,268	\$3,857,913	\$3,935,071	\$4,013,773
FTA 5310	\$414,317	\$422,603	\$431,055	\$439,676	\$448,470
FTA 5339	\$394,210	\$402,094	\$410,136	\$418,339	\$426,706
City Utilities Local Share	\$10,704,838	\$10,811,886	\$10,920,005	\$11,029,205	\$11,139,497
State of Missouri/Medicaid	\$155,467	\$155,467	\$155,467	\$155,467	\$158,576
Other local agencies	\$56,969	\$58,108	\$59,270	\$60,455	\$61,665
TOTAL	\$15,433,906	\$15,632,426	\$15,833,847	\$16,038,214	\$16,248,686

	2042	2043	2044	2045	TOTAL
FTA 5307	\$4,094,048	\$4,175,929	\$4,259,448	\$4,344,637	\$83,880,061
FTA 5310	\$457,439	\$466,588	\$475,920	\$485,438	\$9,365,172
FTA 5339	\$435,240	\$443,945	\$452,824	\$461,880	\$11,910,684
City Utilities Local Share	\$11,250,892	\$11,363,401	\$11,477,035	\$11,591,805	\$241,572,343
State of Missouri/Medicaid	\$158,576	\$158,576	\$158,576	\$158,576	\$3,665,459
Other local agencies	\$62,898	\$64,156	\$65,439	\$66,748	\$1,287,711
TOTAL	\$16,459,094	\$16,672,595	\$16,889,241	\$17,109,084	\$351,681,431

Range of Alternatives

Funding through 2045 will be limited. For this reason, OTO has reviewed potential projects over that same time frame, so there is a realistic understanding of what can be accomplished. OTO solicits needs and projects from member jurisdictions and through the public input process. These projects are then subjected to a prioritization process. The list of prioritized projects is compared to the available funding amounts through 2045 and a constrained list of priority projects is selected.

Project Prioritization Process

To prioritize projects, the *Destination 2045* subcommittee developed a set of prioritization factors based on the plan goals. A glossary defining the criteria for points is included in Appendix 2.

95: Prioritization Points

Factor	Max Points
High Volume Corridors	8
Safety	40
Bike/Ped Safety	20
At-Grade RR Crossing	4
Multi-Modal	6
Environmental Justice	8
Current Congestion	15
Future Congestion	7
SW Freight Plan	2
Freight Traffic	4
Bridge Condition	6
Extending Life Cycle	4
Local Priority	15
TOTAL Points	140

2045 Goals

- Safe for all users on all modes
- Asset management and fiscal responsibility
- Connected, integrated, multi-modal system
- Resilient and prepared for the future
- Quality projects implementing best practices

Constrained Project Lists

The long range transportation plan is required to contain a financial plan demonstrating how the adopted transportation plan can be implemented. OTO has identified funding for operations, maintenance, and plan implementation of federal-aid highways and public transportation. As these funds are limited, the list below has been constrained to available funding. The financial plan presented in *Destination 2045* is required to be fiscally constrained by year for the first ten years and the outer years may reflect aggregate cost ranges.

Foremost, OTO has accounted for the FY 2022-2025 Transportation Improvement Program. The FY 2022-2025 TIP contains projects constrained in *Transportation Plan 2040* and has been fiscally constrained itself. The projects contained in the TIP can be found on the OTO website - <https://www.ozarkstransportation.org/what-we-do/transportation-improvement-program>. A small amount of funding is available beyond what has been programmed in the TIP and that has been made available for projects that have yet to be programmed in this timeframe.

Next, OTO has considered those needs that require an annual investment through regular evaluation. The first few years of these programs have already been included in the FY 2022-2025 TIP, then an annual cost/investment plan has been estimated through 2045.

- ADA/Bike/Ped/Trail
- Signal Replacement
- Bridge Asset Management
- Safety Improvement
- Interstate and Major Routes Pavement Improvement
- Minor Routes Pavement

- Intersection Operational Improvement
- ITS Operations and Management
- Operations and Maintenance – State and Local Systems
- Scoping
- Rail

Finally, identified projects have been prioritized as outlined above and assigned a year for construction, with estimated costs inflated to the relevant time frame. The following list has been organized by Route for ease of use. Public transportation projects have been identified in a separate table.

Fiscal Constraint for Roadway, Bicycle, Pedestrian, ITS, Operations, and Maintenance

96: Non-Transit Fiscal Constraint

	2022	2023	2024	2025
Prior Year Funding	\$58,933,279	\$12,187,999	\$19,023,364	\$44,595,172
Projected Funding	\$100,410,254	\$97,182,645	\$80,896,941	\$180,232,831
Inflated Constrained Project Costs	(\$147,155,534)	(\$90,347,280)	(\$55,325,134)	(\$160,050,673)
Remaining Funding	\$12,187,999	\$19,023,364	\$44,595,172	\$64,777,330

	2026	2027	2028	2029
Prior Year Funding	\$64,777,330	\$65,716,301	\$34,520,244	\$70,466,212
Projected Funding	\$73,074,888	\$70,418,246	\$71,242,710	\$72,016,768
Inflated Constrained Project Costs	(\$72,135,917)	(\$101,614,303)	(\$35,296,741)	(\$68,823,084)
Remaining Funding	\$65,716,301	\$34,520,244	\$70,466,212	\$73,659,897

	2030	2031	2032-2037	2038-2045
Prior Year Funding	\$73,659,897	\$77,495,792	\$80,853,933	\$125,718,641
Projected Funding	\$72,800,714	\$73,594,689	\$459,252,353	\$662,091,872
Inflated Constrained Project Costs	(\$68,964,819)	(\$70,236,547)	(\$414,387,645)	(\$625,531,072)
Remaining Funding	\$77,495,792	\$80,853,933	\$125,718,641	\$162,279,441

Constrained Project List for Roadway, Bicycle, Pedestrian, ITS, Operations, and Maintenance

97: Non-Transit Constrained Project List

Project No.	Route	Expected Sponsor Project Name	Description	Time Band	Inflated Cost
39	N/A	Various 2022-2025 TIP	Project Costs for TIP Adopted 7/15/2021	2022	\$147,155,534
39	N/A	Various 2022-2025 TIP	Project Costs for TIP Adopted 7/15/2021	2023	\$78,619,210

Project No.	Route	Expected Sponsor Project Name	Description	Time Band	Inflated Cost
39	N/A	Various 2022-2025 TIP	Project Costs for TIP Adopted 7/15/2021	2024	\$52,907,261
39	N/A	Various 2022-2025 TIP	Project Costs for TIP Adopted 7/15/2021	2025	\$38,395,001
43	N/A	Various ADA/Bike/Ped/Trail Investments	Annual Program	2023	\$430,000
43	N/A	Various ADA/Bike/Ped/Trail Investments	Annual Program	2024	\$800,000
43	N/A	Various ADA/Bike/Ped/Trail Investments	Annual Program	2025	\$1,500,000
43	N/A	Various ADA/Bike/Ped/Trail Investments	Annual Program	2026	\$2,100,000
43	N/A	Various ADA/Bike/Ped/Trail Investments	Annual Program	2027	\$2,163,000
43	N/A	Various ADA/Bike/Ped/Trail Investments	Annual Program	2028	\$2,227,890
43	N/A	Various ADA/Bike/Ped/Trail Investments	Annual Program	2029	\$2,294,727
43	N/A	Various ADA/Bike/Ped/Trail Investments	Annual Program	2030	\$2,363,569
43	N/A	Various ADA/Bike/Ped/Trail Investments	Annual Program	2031	\$2,434,476
43	N/A	Various ADA/Bike/Ped/Trail Investments	Annual Program	2032-2037	\$16,219,601
43	N/A	Various ADA/Bike/Ped/Trail Investments	Annual Program	2038-2045	\$26,624,524
10	N/A	MoDOT Signal Replacement Program	Annual Program	2026	\$4,502,035
11	N/A	MoDOT Bridge Asset Management Program	Annual Program	2025	\$2,458,636
11	N/A	MoDOT Bridge Asset Management Program	Annual Program	2026	\$2,532,395
11	N/A	MoDOT Bridge Asset Management Program	Annual Program	2027	\$2,608,367
11	N/A	MoDOT Bridge Asset Management Program	Annual Program	2028	\$2,686,618
11	N/A	MoDOT Bridge Asset Management Program	Annual Program	2029	\$2,767,216
11	N/A	MoDOT Bridge Asset Management Program	Annual Program	2030	\$2,850,233
11	N/A	MoDOT Bridge Asset Management Program	Annual Program	2031	\$2,935,740
11	N/A	MoDOT Bridge Asset Management Program	Annual Program	2032-2037	\$19,730,208
11	N/A	MoDOT Bridge Asset Management Program	Annual Program	2038-2045	\$32,947,211
12	N/A	MoDOT Safety Improvement Program	Annual Program	2025	\$1,966,909

Project No.	Route	Expected Sponsor Project Name	Description	Time Band	Inflated Cost
12	N/A	MoDOT Safety Improvement Program	Annual Program	2026	\$2,025,916
12	N/A	MoDOT Safety Improvement Program	Annual Program	2027	\$2,086,693
12	N/A	MoDOT Safety Improvement Program	Annual Program	2028	\$2,149,294
12	N/A	MoDOT Safety Improvement Program	Annual Program	2029	\$2,213,773
12	N/A	MoDOT Safety Improvement Program	Annual Program	2030	\$2,280,186
12	N/A	MoDOT Safety Improvement Program	Annual Program	2031	\$2,348,592
12	N/A	MoDOT Safety Improvement Program	Annual Program	2032-2037	\$15,647,404
12	N/A	MoDOT Safety Improvement Program	Annual Program	2038-2045	\$25,685,260
13	N/A	MoDOT Interstate and Major Routes Pavement Improvement Program	Annual Program	2025	\$8,741,816
13	N/A	MoDOT Interstate and Major Routes Pavement Improvement Program	Annual Program	2026	\$9,004,070
13	N/A	MoDOT Interstate and Major Routes Pavement Improvement Program	Annual Program	2027	\$9,274,193
13	N/A	MoDOT Interstate and Major Routes Pavement Improvement Program	Annual Program	2028	\$9,552,418
13	N/A	MoDOT Interstate and Major Routes Pavement Improvement Program	Annual Program	2029	\$9,838,991
13	N/A	MoDOT Interstate and Major Routes Pavement Improvement Program	Annual Program	2030	\$10,134,161
13	N/A	MoDOT Interstate and Major Routes Pavement Improvement Program	Annual Program	2031	\$10,438,185
13	N/A	MoDOT Interstate and Major Routes Pavement Improvement Program	Annual Program	2032-2037	\$72,005,677
13	N/A	MoDOT Interstate and Major Routes Pavement Improvement Program	Annual Program	2038-2045	\$126,566,059
19	N/A	MoDOT Minor Routes Pavement Program	Annual Program	2025	\$811,896
19	N/A	MoDOT Minor Routes Pavement Program	Annual Program	2026	\$836,253
19	N/A	MoDOT Minor Routes Pavement Program	Annual Program	2027	\$861,341

Project No.	Route	Expected Sponsor Project Name	Description	Time Band	Inflated Cost
19	N/A	MoDOT Minor Routes Pavement Program	Annual Program	2028	\$887,181
19	N/A	MoDOT Minor Routes Pavement Program	Annual Program	2029	\$913,796
19	N/A	MoDOT Minor Routes Pavement Program	Annual Program	2030	\$941,210
19	N/A	MoDOT Minor Routes Pavement Program	Annual Program	2031	\$969,446
19	N/A	MoDOT Minor Routes Pavement Program	Annual Program	2032-2037	\$6,572,273
19	N/A	MoDOT Minor Routes Pavement Program	Annual Program	2038-2045	\$11,164,411
21	N/A	MoDOT Intersection Operational Improvement Program	Annual Program	2025	\$546,364
21	N/A	MoDOT Intersection Operational Improvement Program	Annual Program	2026	\$562,754
21	N/A	MoDOT Intersection Operational Improvement Program	Annual Program	2027	\$579,637
21	N/A	MoDOT Intersection Operational Improvement Program	Annual Program	2028	\$597,026
21	N/A	MoDOT Intersection Operational Improvement Program	Annual Program	2029	\$614,937
21	N/A	MoDOT Intersection Operational Improvement Program	Annual Program	2030	\$633,385
21	N/A	MoDOT Intersection Operational Improvement Program	Annual Program	2031	\$652,387
21	N/A	MoDOT Intersection Operational Improvement Program	Annual Program	2032-2037	\$4,346,501
21	N/A	MoDOT Intersection Operational Improvement Program	Annual Program	2038-2045	\$7,134,794
34	N/A	MoDOT/Springfield ITS Operations and Management Program	Annual Program	2025	\$1,803,000
34	N/A	MoDOT/Springfield ITS Operations and Management Program	Annual Program	2026	\$2,082,600
34	N/A	MoDOT/Springfield ITS Operations and Management Program	Annual Program	2027	\$1,912,802

Project No.	Route	Expected Sponsor Project Name	Description	Time Band	Inflated Cost
34	N/A	MoDOT/Springfield ITS Operations and Management Program	Annual Program	2028	\$1,970,186
34	N/A	MoDOT/Springfield ITS Operations and Management Program	Annual Program	2029	\$2,029,292
34	N/A	MoDOT/Springfield ITS Operations and Management Program	Annual Program	2030	\$2,090,171
34	N/A	MoDOT/Springfield ITS Operations and Management Program	Annual Program	2031	\$2,152,876
34	N/A	MoDOT/Springfield ITS Operations and Management Program	Annual Program	2032-2037	\$14,343,453
34	N/A	MoDOT/Springfield ITS Operations and Management Program	Annual Program	2038-2045	\$23,544,822
44	N/A	Various Operations and Maintenance - State and Local Systems	Annual Program	2026	\$9,860,043
44	N/A	Various Operations and Maintenance - State and Local Systems	Annual Program	2027	\$10,155,844
44	N/A	Various Operations and Maintenance - State and Local Systems	Annual Program	2028	\$10,460,520
44	N/A	Various Operations and Maintenance - State and Local Systems	Annual Program	2029	\$10,774,335
44	N/A	Various Operations and Maintenance - State and Local Systems	Annual Program	2030	\$11,097,565
44	N/A	Various Operations and Maintenance - State and Local Systems	Annual Program	2031	\$11,430,492
44	N/A	Various Operations and Maintenance - State and Local Systems	Annual Program	2032-2037	\$76,155,222
44	N/A	Various Operations and Maintenance - State and Local Systems	Annual Program	2038-2045	\$125,009,026
48	N/A	MoDOT Scoping	Annual Program	2025	\$50,000
48	N/A	MoDOT Scoping	Annual Program	2026	\$50,000
48	N/A	MoDOT Scoping	Annual Program	2027	\$51,500
48	N/A	MoDOT Scoping	Annual Program	2028	\$53,045
48	N/A	MoDOT Scoping	Annual Program	2029	\$54,636
48	N/A	MoDOT Scoping	Annual Program	2030	\$56,275

Project No.	Route	Expected Sponsor Project Name	Description	Time Band	Inflated Cost
48	N/A	MoDOT Scoping	Annual Program	2031	\$57,964
48	N/A	MoDOT Scoping	Annual Program	2032-2037	\$399,851
48	N/A	MoDOT Scoping	Annual Program	2038-2045	\$702,827
49	N/A	MoDOT Rail	Annual Program	2026	\$200,000
49	N/A	MoDOT Rail	Annual Program	2027	\$206,000
49	N/A	MoDOT Rail	Annual Program	2028	\$212,180
49	N/A	MoDOT Rail	Annual Program	2029	\$218,545
49	N/A	MoDOT Rail	Annual Program	2030	\$225,102
49	N/A	MoDOT Rail	Annual Program	2031	\$231,855
49	N/A	MoDOT Rail	Annual Program	2032-2037	\$1,544,724
49	N/A	MoDOT Rail	Annual Program	2038-2045	\$2,535,669
A31	N/A	Various EV Chargers	EV Charger Program for about 60 Charging Ports	2024	\$937,500
57	3rd/Oak	Ozark 3rd and Oak Intersection Improvements	Intersection Improvements at 3rd and Oak - Crossing over drainage way	2032-2037	\$2,604,581
247	Azalea	Battlefield Azalea Gap	Complete the gap between Lilac Ln and Morning Glory	2023	\$875,500
1	Chestnut	MoDOT Chestnut Expwy Capacity and Safety Improvements	Capacity and Safety improvements on Chestnut Expressway from Rte. 13 (Kansas Expressway) to Bus. 65 (Glenstone Avenue)	2032-2037	\$5,064,462
212	Chestnut	MoDOT Chestnut Expwy from Glenstone to US 65	Operational Improvements	2038-2045	\$3,559,229
2	Division	MoDOT Division St Improvements	Capacity improvements from Airport Boulevard to West Bypass	2038-2045	\$16,016,529
99	Division	Springfield Division Street - Glenstone to Hwy 65	Capacity and Safety Improvements	2032-2037	\$15,844,532
45	EW Arterial	Greene East/West Arterial from Kansas Expressway to Campbell Ave	New roadway corridor with bicycle and pedestrian accommodations	2038-2045	\$26,249,311
114	Glenstone	MoDOT Glenstone Safety and Operational Improvements Phase III	Glenstone Safety and Operational Improvements from Valley Water Mill to James River Freeway	2030	\$950,078
183	I-244	MoDOT Conversion of JRF and US 65 to I-244	Ramp Improvements and Signage necessary to designate I-244	2029	\$1,229,874
4	I-44	MoDOT I-44 Capacity Improvements I	Capacity improvements from Rte. 160 (West Bypass) to Rte. 13 (Kansas Expressway) in Springfield	2032-2037	\$17,871,764

Project No.	Route	Expected Sponsor Project Name	Description	Time Band	Inflated Cost
5	I-44	MoDOT I-44 Capacity Improvements II	Capacity improvements from Kansas Expwy to Glenstone Ave	2025	\$51,716,260
6	I-44	MoDOT I-44 Ramp Improvements	Ramp improvements at I-44/Rte. 125 interchange	2030	\$2,533,540
41	I-44/MM/B	MoDOT I-44 and Routes MM/B Interchange	Interchange improvements at Routes MM/B	2023	\$7,332,570
22	ITS	MoDOT ITS from Springfield to Rogersville	ITS improvements from Springfield to Rogersville (Route 65 to Route 125)	2024	\$1,140,468
126	Kansas Expy	MoDOT Kansas Expressway Capital Improvements Phase I, II, & III	Kansas Expwy - Norton Rd to Kearney Includes Interchange	2027	\$57,224,000
127	Kansas Expy	MoDOT Kansas Expressway Capital Improvements Phase I, II, & III	Kansas Expwy - Kearney to Grand	2032-2037	\$4,340,968
128	Kansas Expy	MoDOT Kansas Expressway Capital Improvements Phase I	Kansas Expwy - Grand to Republic, excluding Sunshine Intersection	2027	\$7,535,281
131	Kansas Expy	MoDOT Kansas Expressway Capital Improvements Phase II	Kansas Expwy - Grand to Republic, excluding Sunshine Intersection	2032-2037	\$9,405,430
248	Kansas Expy/Sunshine	MoDOT Kansas and Sunshine Intersection	Intersection Improvements	2027	\$6,955,644
134	Kearney	MoDOT Kearney Safety and Operational Improvements - Airport to LeCompte	Kearney - Airport to LeCompte	2032-2037	\$2,652,331
138	Kearney	MoDOT Kearney Safety and Operational Improvements - LeCompte to Mulroy	Kearney - LeCompte to Mulroy	2038-2045	\$3,737,190
216	LeCompte	Springfield LeCompte Rd Capacity Improvements	Capacity Improvements	2038-2045	\$3,559,229
215	LeCompte/YY	MoDOT LeCompte Rd and Rte YY Intersection Improvements	Intersection Improvements	2038-2045	\$3,559,229
65	Longview/65	MoDOT Longview & 65 Interchange	Longview and 65 interchange	2038-2045	\$24,914,600
246	Main	Nixa Main Street Nixa from Route 14 to North	Widening and Sidewalks	2038-2045	\$5,345,693
A33	Main	Springfield Main Avenue	Replace Bridge on Main Avenue	2025	7,500,000
69	McCracken	Ozark McCracken Rd Expansion	McCracken Capacity, Operational and Safety Improvement	2030	\$2,406,863
78	Miller	Willard Miller - E Proctor to New Melville	This is a project to continue improvement on a collector street	2024	\$477,405
80	Miller	Willard Miller Rd - New Melville to Hughes	Approximately 3,980 feet of road widening with ADA compliant sidewalks and stormwater improvements	2032-2037	\$2,170,484

Project No.	Route	Expected Sponsor Project Name	Description	Time Band	Inflated Cost
8	Mulroy Road	Other Mulroy and I-44	Interchange Improvements	2023	\$3,090,000
14	Route 125	MoDOT Rte. 125 Intersection and Outer Road Improvements	Intersection improvements at I-44 North Outer Road; Relocate North Outer Road	2032-2037	\$11,299,539
240	Route 125/Farm Road 84	MoDOT Route 125 and Farm Road 84 Intersection Improvements	Intersection Improvements	2038-2045	\$1,334,711
172	Route 125/OO	MoDOT S. 125/OO Signalization	Signalization	2028	\$1,194,052
173	Route 125/OO	MoDOT N. 125/OO Intersection Improvements	Intersection Improvements	2025	\$6,556,362
15	Route 13	MoDOT Rte. 13 Intersection improvements at FR 94	Add turn lanes/reconfigure intersection/safety enhancements	2028	\$1,791,078
16	Route 14	MoDOT Rte. 14 Improvements from 14th Avenue to Rte. W	Capacity, safety and operational improvements from 14th Ave. to Rte. W	2029	\$10,811,821
17	Route 14	MoDOT Rte. 14 Improvements from Rte. NN to 3rd Street	Widen bridge, add westbound right turn lane from Route NN to 3rd Street in Ozark. Potential Cost Share	2029	\$4,304,559
18	Route 14	MoDOT Rte. 14 Improvements Nixa to Ozark	Roadway improvements from Tiffany Boulevard/Majestic Oak Ave. to Fremont Road	2038-2045	\$42,427,784
61	Route 14	MoDOT Rte. 14 Improvements - Fremont to 32nd	Route 14 improvements from Fremont to 32nd	2038-2045	\$5,698,325
56	Route 14/Church	MoDOT Church and 14 Crossing improvements	Hwy 14 & Church control & Streetscape upgrade	2025	\$2,403,999
59	Route 14/W	MoDOT Intersection Improvements at W - Route 14	Intersection Improvements at W	2026	\$2,813,772
139	Route 160	MoDOT Rte. 160 Capacity Improvements	US 160 - Plainview to Hwy CC	2038-2045	\$39,151,514
140	Route 160	MoDOT Rte. 160 Capacity Improvements	US 160 - Hwy CC to Rte 14	2038-2045	\$19,575,757
142	Route 160	MoDOT Rte. 160 Capacity Improvements	US 160 & Aldersgate Intersection improvements	2038-2045	\$1,779,614
244	Route 174	MoDOT Rte. 174 Intersection improvements at Main St	Intersection improvements	2032-2037	\$3,328,075
243	Route 174	MoDOT Rte 174	Capacity Improvements Main to 60	2032-2037	\$7,234,946
23	Route 60	MoDOT US 60 Capital Improvements	Capital improvements from Route M/MM to Route 360	2025	\$10,091,334
24	Route 60	MoDOT Rte. 60 Freeway Improvements from Routes NN/J to Farm Road 223	Freeway improvements from e/o Rtes. NN/J to Farm Road 223	2032-2037	\$22,693,133

Project No.	Route	Expected Sponsor Project Name	Description	Time Band	Inflated Cost
26	Route 60	MoDOT Rte. 60 Freeway Improvements	Freeway improvements from e/o Rte. 65 to w/o Rtes. NN/J w/o interchange at 189	2032-2037	\$28,939,785
196	Route 60	MoDOT US 60 Safety and Capacity Improvements- M to Main St Phase I	Intersection Improvements	2029	\$4,181,571
200	Route 60	MoDOT US 60 improvements - RT 174 to MM	Six Lane	2026	\$31,064,043
250	Route 60	MoDOT Address flooding on Route 60 between NN and 223	Roadway geometric improvements to reduce flooding on Route 60	2032-2037	\$5,787,957
167	Route 60/65	MoDOT Ramp Improvements at Route 60/65	Ramp Capacity Improvements	2032-2037	\$14,469,893
235	Route 60/National	MoDOT JRF & National Interchange Capacity Improvements	Interchange Improvements	2038-2045	\$14,236,914
27	Route 65	MoDOT Rte. 65 Interchange Improvements at Kearney Street	Interchange improvements, replace bridge at Route 744 (Kearney St.) in Springfield	2030	\$19,001,551
28	Route 65	MoDOT Rte. 65 Capacity Improvements, Rte. 14 to Rte. F	Capacity and Operational Improvements from Rte. 14 to Rte. F	2025	\$11,145,815
29	Route 65	MoDOT Rte. 65 Capacity Improvements, Rte. CC to Rte. 14	Capacity Improvements Rte. CC to Rte. 14	2029	\$16,575,010
33	Route 65/CC	MoDOT Route 65 and Rte. CC Interchange operational improvements	Eastbound Dual Left turn lanes to Route 65, extend northbound ramp	2025	\$2,513,272
213	Route AA/Owen	MoDOT Rte AA intersection improvements at Owen Rd	Intersection Improvements	2038-2045	\$2,669,421
161	Route AB/266/B	MoDOT Rtes. AB, 266 and B Intersection Realignment	Rte AB & Hwy 266	2038-2045	\$3,559,229
162	Route AB/266/B	MoDOT Rtes. AB, 266 and B Intersection improvements	Hwy 266 & Rte B	2032-2037	\$4,051,570
30	Route CC	MoDOT Rte. CC Capacity Improvements Fremont Road to Rte. 65	Capacity improvements from Fremont Road to Route 65 in Ozark	2025	\$6,009,999
31	Route CC	MoDOT Rte. CC Extension in Nixa	Extend Route CC from Route 160 to Main Street in Nixa	2032-2037	\$8,681,936
32	Route CC	MoDOT Rte. CC Intersection improvements at Main St.	Intersection Improvements at Rte. CC & Main Street in Nixa	2031	\$2,413,830
63	Route CC	MoDOT Rte. J Improvements Ozark	Rte J - US 65 to Hwy NN - Widening	2038-2045	\$5,338,843
154	Route CC	MoDOT Rte. CC Improvements in Nixa and Ozark - Cheyenne to Main	Rte. CC Cheyenne to Main	2030	\$11,400,931

Project No.	Route	Expected Sponsor Project Name	Description	Time Band	Inflated Cost
155	Route CC	MoDOT Rte. CC Improvements in Nixa and Ozark - Fremont to Cheyenne	Rte CC - Fremont to Cheyenne	2032-2037	\$10,128,925
204	Route FF	MoDOT Route FF Intersection Improvements	Improvements at various locations along FF through Battlefield	2032-2037	\$4,340,968
36	Route MM	MoDOT Rte. MM Improvements I-44 to James River Freeway	Capacity Improvements from I-44 to James River Freeway in Republic	2025	\$10,061,830
37	Route MM	MoDOT Route MM Capacity Improvements	Widen improvements from 3 to 5 lanes	2038-2045	\$3,000,430
251	Route MM	MoDOT Widen Bridge over James River Freeway	Bridge Widening	2038-2045	\$12,457,300
64	Route NN	MoDOT NN Improvements - Jackson to Weaver	Operational and Safety Improvements on HWY NN from Weaver to Jackson	2031	\$4,175,274
67	Route NN	MoDOT Hwy NN Improvements - J to Sunset	Capacity, Operational and Safety Improvements	2038-2045	\$2,598,237
245	Route O/Miller	MoDOT Route O and Miller Intersection and Pedestrian Improvements	Intersection and Pedestrian Improvements	2038-2045	\$177,961
174	Route OO	MoDOT OO Capacity Improvements	Capacity Improvements Route OO from south Route 125 to north Route 125	2025	\$3,278,181
169	Route OO/Washington	MoDOT Route OO and Washington Street Intersection Improvements	Intersection improvements at Washington Street, including widening of grade crossing and signalization	2026	\$4,502,035
209	Route P	MoDOT Rte P Intersection Improvements at Miller	Intersection Improvements	2032-2037	\$1,085,242
38	Route ZZ	MoDOT Rte. ZZ Extension	Extend Route ZZ to Route 60, construct railroad overpass in Republic.	2031	\$27,712,078
202	Route ZZ	MoDOT Rte ZZ Intersection Improvements at Hines	Intersection Improvements	2032-2037	\$2,170,484
233	Route ZZ/Repmo	MoDOT Rte ZZ & Repmo Dr Intersection Improvements	Intersection Improvements	2038-2045	\$2,669,421
A32	Smyrna	Christian Green Bridge	Replace Green Bridge in Christian County	2024	\$,3,560,000
58	South	MoDOT South Street Expansion	Capacity/Safety/Operational Improvements 6th to 14th	2028	\$1,515,252
40	Sunshine	MoDOT East Sunshine Safety and Operational Improvements	Safety and operational improvements on Sunshine Street from Bus. 65 (Glenstone Avenue) to Bedford Avenue.	2032-2037	\$3,255,726
147	West Bypass	MoDOT West Bypass Intersection Improvements Phase I	Various Intersection Improvements from Division to James River Freeway	2031	\$2,283,353

Project No.	Route	Expected Sponsor Project Name	Description	Time Band	Inflated Cost
TOTAL COST					(\$1,909,868,749)
Prior Year Funding*					\$58,933,279
Projected Funding					\$2,013,214,911
Remaining Funding					\$162,279,441
*Prior year funding identified in FY 2022-2025 TIP					

Fiscal Constraint for Transit

98: Transit Fiscal Constraint

	2022	2023	2024	2025
Prior Year Funding	\$4,017,791	\$2,320,541	\$2,039,085	\$5,192,974
Projected Funding	\$10,344,650	\$10,675,262	\$13,682,043	\$13,252,753
Inflated Constrained Project Costs	(\$12,041,900)	(\$10,956,718)	(\$10,528,154)	(\$11,446,454)
Remaining Funding	\$2,320,541	\$2,039,085	\$5,192,974	\$6,999,273

	2026	2027	2028	2029
Prior Year Funding	\$6,999,273	\$6,714,986	\$6,583,705	\$6,607,532
Projected Funding	\$13,422,808	\$13,592,326	\$13,764,274	\$13,938,693
Inflated Constrained Project Costs	(\$13,707,096)	(\$13,723,606)	(\$13,740,447)	(\$13,757,624)
Remaining Funding	\$6,714,986	\$6,583,705	\$6,607,532	\$6,788,601

	2030	2031	2032-2037	2038-2045
Prior Year Funding	\$6,788,601	\$7,129,076	\$7,634,147	\$8,528,395
Projected Funding	\$14,115,621	\$14,298,087	\$89,711,725	\$130,883,188
Inflated Constrained Project Costs	(\$13,775,145)	(\$13,793,017)	(\$88,817,477)	(\$135,987,192)
Remaining Funding	\$7,129,076	\$7,634,147	\$8,528,395	\$3,424,392

Constrained Project List for Transit

99: Transit Constrained Project List

Expected Sponsor Expenses	2022	2023	2024	2025
CU Transit Operating Expenses	\$0	\$0	\$0	\$0
CU Transit Preventative Maintenance	\$0	\$0	\$0	\$0
CU Transit Planning	\$0	\$0	\$0	\$0
CU Transit Security	\$0	\$0	\$0	\$0
CU Transit ADA Enhancements	\$0	\$0	\$0	\$0
CU Transit Fixed Route Bus Replacement	\$0	\$0	\$0	\$2,000,000
CU Transit Paratransit Bus Replacement	\$0	\$0	\$560,000	\$0
CU Transit Shelter/Signs/ Amenities	\$0	\$0	\$0	\$0
CU Transit ITS	\$0	\$0	\$0	\$0

<i>Various</i> Other Agency Vehicles	\$0	\$0	\$0	\$0
<i>Various</i> FY 2022-2025 TIP	\$12,041,900	\$10,956,718	\$9,968,154	\$9,446,454
Total	(\$12,041,900)	(\$10,956,718)	(\$10,528,154)	(\$11,446,454)
Prior Year Funding	\$4,017,791	\$2,320,541	\$2,039,085	\$5,192,974
Projected Funding	\$10,344,650	\$10,675,262	\$13,682,043	\$13,252,753
Remaining Funding	\$2,320,541	\$2,039,085	\$5,192,974	\$6,999,273

Expected Sponsor Expenses	2026	2027	2028	2029
<i>CU Transit</i> Operating Expenses	\$11,257,740	\$11,257,740	\$11,257,740	\$11,257,740
<i>CU Transit</i> Preventative Maintenance	\$1,623,840	\$1,623,840	\$1,623,840	\$1,623,840
<i>CU Transit</i> Planning	\$227,312	\$231,858	\$236,495	\$241,225
<i>CU Transit</i> Security	\$37,279	\$38,024	\$38,785	\$39,560
<i>CU Transit</i> ADA Enhancements	\$160,362	\$163,569	\$166,841	\$170,177
<i>CU Transit</i> Fixed Route Bus Replacement	\$0	\$0	\$0	\$0
<i>CU Transit</i> Paratransit Bus Replacement	\$0	\$0	\$0	\$0
<i>CU Transit</i> Shelter/Signs/ Amenities	\$50,192	\$51,196	\$52,220	\$53,264
<i>CU Transit</i> ITS	\$102,956	\$105,015	\$107,115	\$109,258
<i>Various</i> Other Agency Vehicles	\$247,416	\$252,364	\$257,411	\$262,559
<i>Various</i> FY 2022-2025 TIP	\$0	\$0	\$0	\$0
Total	(\$13,707,096)	(\$13,723,606)	(\$13,740,447)	(\$13,757,624)
Prior Year Funding	\$6,999,273	\$6,714,986	\$6,583,705	\$6,607,532
Projected Funding	\$13,422,808	\$13,592,326	\$13,764,274	\$13,938,693
Remaining Funding	\$6,714,986	\$6,583,705	\$6,607,532	\$6,788,601

Expected Sponsor Expenses	2030	2031	2032-2037	2038-2045
<i>CU Transit</i> Operating Expenses	\$11,257,740	\$11,257,740	\$72,435,489	\$110,991,562
<i>CU Transit</i> Preventative Maintenance	\$1,623,840	\$1,623,840	\$10,448,247	\$16,009,655
<i>CU Transit</i> Planning	\$246,050	\$250,971	\$1,614,816	\$2,474,353
<i>CU Transit</i> Security	\$40,352	\$41,159	\$264,826	\$405,789
<i>CU Transit</i> ADA Enhancements	\$173,581	\$177,053	\$1,139,207	\$1,745,585
<i>CU Transit</i> Fixed Route Bus Replacement	\$0	\$0	\$0	\$0
<i>CU Transit</i> Paratransit Bus Replacement	\$0	\$0	\$0	\$0
<i>CU Transit</i> Shelter/Signs/ Amenities	\$54,329	\$55,416	\$356,562	\$546,354
<i>CU Transit</i> ITS	\$111,443	\$113,672	\$731,396	\$1,120,705
<i>Various</i> Other Agency Vehicles	\$267,811	\$273,167	\$1,826,933	\$2,693,189
<i>Various</i> FY 2022-2025 TIP	\$0	\$0	\$0	\$0
Total	(\$13,775,145)	(\$13,793,017)	(\$88,817,477)	(\$135,987,192)

Prior Year Funding	\$6,788,601	\$7,129,076	\$7,634,147	\$8,528,395
Projected Funding	\$14,115,621	\$14,298,087	\$89,711,725	\$130,883,188
Remaining Funding	\$7,129,076	\$7,634,147	\$8,528,395	\$3,424,392

unconstrained Projects

The following tables include those projects not prioritized for funding.

Non-Transit unconstrained Needs

100: Unconstrained Non-Transit List – Unfunded Needs

Project No.	Route	Expected Sponsor Project Name	Description	Current Cost
74	10th	Ozark 10th Street Bridge	10th Street Bridge - Part of the NN Improvements to South - Connect NN to Oak and then South St. Must cross Finley River	\$8,500,000
3	4th to Plainview	Battlefield New Road from City of Battlefield to Plainview	Connecting 4th in Battlefield to Plainview Road	\$2,000,000
222	Camino Alto/Lyon	Springfield Camino Alto & Lyon Ave	Signalization	\$2,500,000
92	Campbell	Springfield Campbell Avenue - Republic to Westview (Primrose)	Capacity and Safety Improvements	\$1,500,000
46	EW Arterial	Greene East/West Arterial - Campbell to National Ave	New roadway including bicycle and pedestrian accommodations.	\$15,000,000
47	EW Arterial	Greene East/West Arterial - National Ave to Kissick	New roadway including bicycle and pedestrian accommodations.	\$19,000,000
185	EW Arterial	Greene East/West Arterial from Kissick to Southview	New roadway including bicycle and pedestrian accommodations.	\$15,000,000
187	EW Arterial	Greene E/W Arterial - Kansas Expy to FF	New roadway including bicycle and pedestrian accommodations.	\$17,000,000
52	Farm Road 115/140	Greene Farm Road 115 (Haseltine Rd) at Farm Road 140	Intersection improvements at FR 115 & FR 140 to include a new roundabout with storm water and pedestrian improvements.	\$1,500,000
7	Farm Road 190	Greene Extend Farm Road 190 past Battlefield	Extension from FF to FR 115	\$2,000,000
221	Farm Road 89/Hickory	Greene Farm Road 89 & Hickory Ln	Signalization	\$10,000

Project No.	Route	Expected Sponsor Project Name	Description	Current Cost
220	Farm Road 89/ Williamsburg	Greene Farm Road 89 & Williamsburg Walk	Signalization	\$10,000
70	Farmers Branch	MoDOT Farmers Branch Expansion	Capacity, Operational and Safety Improvements Farmers Branch to County Line	\$3,350,000
71	Fremont	Ozark Fremont Rd Expansion	Fremont Rd - HWY CC to Longview Capacity, Operational and Safety Improvements	\$2,765,000
73	Fremont	Ozark Fremont Rd Expansion - Ph 2	Fremont Rd - Longview to 14. Capacity, Operational and Safety Improvements	\$3,550,000
231	Glenstone/ Sunshine	MoDOT Glenstone & Sunshine intersection improvements	Operational improvements at Sunshine and Glenstone	\$5,000,000
234	Hines/Lynn	Republic Hines & Lynn intersection improvements	Intersection Improvements	\$2,000,000
83	Hughes	Willard Hughes Rd - Megan to Hunt Rd	Approximately 1,340' of new road construction, built to collector standards. ROW acquisition required.	\$550,000
121	I-44	MoDOT I-44 Safety and Operational Improvements	I-44 - US 65 to Rte 125	\$4,080,000
116	I-44	MoDOT I-44 Safety and Operational Improvements	I-44 - Chestnut to US 160	\$4,080,000
117	I-44	MoDOT I-44 Safety and Operational Improvements	I-44 - 360 to Chestnut	\$4,080,000
168	I-44/125	MoDOT I-44 and Route 125 Interchange Improvements	Interchange improvements at Route 125 including pedestrian accommodations	\$20,000,000
130	Kansas Expy	MoDOT Kansas Expressway Capital Improvements Phase III	Kansas Expwy - Grand to Republic, excluding Sunshine Intersection	\$6,500,000
125	Kansas Expy	MoDOT Kansas Expressway Capital Improvements Phase I, II, & III	Kansas Expwy - OTO Northern Boundary to Norton	\$25,000,000
236	Kansas Expy/Walnut	MoDOT Kansas Expwy & Walnut St bike crossing	Bike/ped crossing improvements	\$150,000

Project No.	Route	Expected Sponsor Project Name	Description	Current Cost
219	Main/Farm Road 168	Greene Main & FR 168 intersection improvements	Intersection Improvements	\$550,000
81	McCracken	Ozark McCracken Rd Upgrades Ph 2	Operational and Safety Improvements Hawkins Road to HWY J	\$2,250,000
68	Melton	Ozark Melton Intersection & Turn Lane	Intersection at Melton & right turn lane on to Melton	\$996,000
55	National Avenue	Greene National Avenue (FR 163) Roadway Extension	Extend National Avenue (FR 163) from Farm Road 192 to the southern Greene County/Christian County line as a Primary Arterial corridor.	\$7,000,000
66	North	Ozark W North Rd Improvements	Longview expansion from Cheyenne to Fremont	\$1,560,000
88	North	Nixa North St expansion	Upgrading North St to current OTO Secondary Arterial Standards	\$8,000,000
62	OTC Entrance	MoDOT OTC Entrance Upgrades	OTC Campus Entrance control upgrade	\$2,500,000
54	Plainview Road	Greene Plainview Road (FR 182) Widening from Golden to Battlefield City Limits	Widening Plainview Road (FR 182) to a 3-lane section including upgraded pedestrian facilities and new curb & gutter.	\$10,000,000
184	Republic	Springfield Republic Road Bridge over JRF	New Bridge to connect to Gasconade	\$25,000,000
242	Route 125	MoDOT 125	Safety Improvements from FR 84 to OTO North Boundary	\$5,000,000
241	Route 125/Farm Road 132	MoDOT 125/ FR 132	Intersection Improvements	\$475,000
173	Route 125/00	MoDOT N. 125/00 Intersection Improvements	Intersection Improvements	\$2,000,000
239	Route 125/YY	MoDOT 125/YY	Intersection Improvements	\$2,000,000
218	Route 13	MoDOT Highway 13 Connector to 160	Alternate route from US 360 to US 160	\$65,000,000
190	Route 14	MoDOT Hwy 14 Nicholas to OTO western boundary	Capacity and Safety Improvements	\$7,500,000
189	Route 14	MoDOT Hwy 14 improvements Rte W to Rte JJ	Capacity and Safety improvements	\$3,250,000

Project No.	Route	Expected Sponsor Project Name	Description	Current Cost
141	Route 160	MoDOT Rte. 160 Capacity Improvements	US 160 - Rte 14 to OTO Boundary improve transition from 6-lanes to 4-lanes to 2-lanes	\$6,000,000
193	Route 160	MoDOT US 160 widening from Jackson to Rte 123	Capacity Improvements	\$7,500,000
192	Route 160/Farm Road 123	MoDOT US 160 & FR 123 intersection improvements	Intersection Improvements	\$2,000,000
201	Route 174/Boston	MoDOT Intersection Improvements Rte 174/Boston	Intersection Improvements	\$1,500,000
238	Route 413	MoDOT MO 413 - JRF to West Bypass	six-lane	\$21,000,000
249	Route 60	MoDOT US 60 Safety and Capacity Improvements- M to Main St Phase II	Intersection Improvements	\$3,500,000
9	Route 60	MoDOT Rte. 60 Freeway Improvements	Interchange at 189	\$20,000,000
124	Route 60	MoDOT James River Freeway Capacity Improvements	JRF - West Bypass to Kansas Expwy	\$16,000,000
123	Route 60	MoDOT James River Freeway Capacity Improvements	JRF - MO 413 to West Bypass	\$15,000,000
122	Route 60	MoDOT James River Freeway Capacity Improvements	JRF - I-44 to MO 413	\$15,000,000
25	Route 60	MoDOT Rte. 60 Capacity Improvements west of Republic	Roadway improvements from County Road 194 to West Avenue in Republic.	\$3,979,000
42	Route 60/Main/P	MoDOT US 60 & Main St. Republic/State Highway P	Intersection improvements at US 60 & Main St./State Highway P, Republic. Linear and capacity improvements along Main St./State Highway P. to E Miller Rd.	\$3,000,000
164	Route 65	MoDOT US 65 Intersection improvements north of I-44	Us 65 & Rte AA/C	\$12,500,000

Project No.	Route	Expected Sponsor Project Name	Description	Current Cost
165	Route 65	MoDOT US 65 Intersection improvements north of I-44	US 65 & Rte KK/A	\$2,500,000
186	Route 65/Gasconade	Springfield Highway 65 & Gasconade Interchange	New interchange S. of Gasconade on US 60	\$60,000,000
225	Route AB	MoDOT Rte AB Safety improvements from Willard to Rte EE	Safety Improvements	\$1,000,000
159	Route AB/266/B	MoDOT Rtes. AB, 266 and B Intersection improvements	Rte AB & Rte EE	\$1,000,000
160	Route AB/266/B	MoDOT Rtes. AB, 266 and B Intersection improvements	Rte AB and RR X-ing	\$500,000
157	Route AB/266/B	MoDOT Rtes. AB, 266 and B Intersection improvements	Rte AB & New Melville (FR84)	\$500,000
158	Route AB/266/B	MoDOT Rtes. AB, 266 and B Intersection improvements	Rte AB & FR 94	\$500,000
214	Route B	MoDOT Rte B from Rte 266 to I-44 lane widening	Capacity Improvements	\$1,500,000
156	Route CC	MoDOT Rte. CC Improvements in Nixa and Ozark	Rte NN - Hwy J to Pheasant Rd - operational and safety improvements	\$29,000,000
207	Route FF	MoDOT Rte FF intersection improvements at Weaver (FR 178)	Intersection improvements	\$2,500,000
205	Route FF	MoDOT Rte FF Safety and Capacity improvements through Battlefield	Capacity and Safety Improvements	\$13,500,000
35	Route FF	MoDOT Rte. FF intersection improvements at Republic Road	Intersection improvements at various locations	\$2,600,000
208	Route M	MoDOT Rte M capacity improvements Rte ZZ to Rte FF	Capacity Improvements	\$20,000,000
232	Route M/Farm Road 101	MoDOT Rte M & FR 101 intersection improvements	Intersection Improvements	\$1,250,000

Project No.	Route	Expected Sponsor Project Name	Description	Current Cost
206	Route MM	MoDOT Rte MM intersection improvements at Sawyer	Intersection Improvements	\$1,250,000
75	Route NN	MoDOT Hwy NN Improvements Oak to South St	NN improvements Oak to South St - Connect NN to Oak and then South St. Must cross Finley River	\$642,070
174	Route OO	MoDOT OO Capacity Improvements	Capacity Improvements Route OO from south Route 125 to north Route 125	\$5,800,000
210	Route P	MoDOT Rte P capacity improvements from Main to Miller	Capacity Improvements	\$4,250,000
217	Route P	MoDOT Rte P center turn lane US 60 to Lombardy	Add a center turn lane to Route P	\$3,750,000
79	Route W	MoDOT Hwy W Expansion	HWY W from 14 to Old Prospect Road, Capacity, Operational and Safety Improvements	\$2,700,000
203	Route ZZ	MoDOT Rte ZZ intersection improvements at FR 174	Intersection Improvements	\$1,500,000
82	Selmore	Ozark Selmore Widening	Capacity, Operational and Safety Improvements	\$3,810,000
76	Sunset	Ozark Sunset Intersection Improvements	Intersection at Sunset improvements	\$1,390,000
170	Washington/Madison	Strafford Realignment of Washington and Madison	Washington, Madison from Route OO to Bumgarner	\$750,000
53	Weaver Road	Greene Weaver Road (FR 178) Widening - West of Campbell Ave.	Widening Weaver Road (FR 178) to a 3-lane secondary arterial section. Project to include pedestrian facilities and curb/gutter.	\$50,000,000
20	West Bypass	MoDOT West Bypass Intersection Improvements Phase II	Division to James River Freeway	\$1,750,000
Total				\$649,127,070

Transit Unconstrained Needs

These needs are based on useful life replacements of existing transit vehicles, as well as remaining Shelter/Signs/Amenities unafforded on the constrained list. Trolley service as a supplement to the existing fixed-route service has been discussed for key locations in and around downtown Springfield. The costs for purchasing three trolleys, as well as operating them, has been included. Also listed are the recommended service changes from the 2012 Transit Route Study. For Levels I through V, the costs are in addition to the previous level and the base transit system, such that Level V total cost would include the current system, plus the costs include in Levels I, II, III, IV, and V. Levels I through V also consider replacement costs for the initial capital costs.

101: Unconstrained Transit List – Unfunded Needs

Expected Sponsor Expenses	2022-2026	2027-2031	2032-2037	2038-2045	Total
CU Transit 6 Paratransit Buses		\$726,000			\$726,000
CU Transit 10 Fixed Route Electric Buses		\$10,000,000			\$10,000,000
CU Transit 10 Fixed Route Electric Buses			\$10,000,000		\$10,000,000
CU Transit 6 Paratransit Buses			\$726,000		\$726,000
CU Transit 4 Fixed Route Electric Buses				\$4,000,000	\$4,000,000
CU Transit Trolley Service (3 Trolleys)		\$1,500,000			\$1,500,000
CU Transit Trolley Service (Operating)		\$500,000	\$5,000,000	\$5,000,000	\$10,500,000
CU Transit Electric Infrastructure	\$1,800,000	\$3,000,000	\$2,400,000	\$1,200,000	\$8,400,000
CU Transit Placemaking Shelters	\$50,000	\$50,000	\$50,000	\$50,000	\$200,000
CU Transit Route Study Level I Additional Costs	\$6,426,105	\$6,383,085	\$10,359,429	\$16,907,203	\$40,075,822
CU Transit Route Study Level II Additional Costs	\$13,135,181	\$11,517,597	\$21,643,197	\$30,507,247	\$76,803,222
CU Transit Route Study Level III Additional Costs	\$17,339,590	\$17,411,821	\$28,248,027	\$47,419,979	\$110,419,417
CU Transit Route Study Level IV Additional Costs	\$19,385,976	\$16,909,144	\$31,946,087	\$44,788,111	\$113,029,317
CU Transit Route Study Level V Additional Costs	\$49,579,852	\$47,097,901	\$82,218,339	\$127,784,880	\$306,680,972
CU Transit Limited Stop Circulator	\$626,281	\$674,683	\$878,796	\$1,474,536	\$3,654,297
Total	\$108,342,985	\$115,770,231	\$193,469,876	\$279,131,956	\$696,715,048

Model Results

As the *Destination 2045* planning process commenced, the OTO travel demand model was utilized to determine current and future needs should no investment be made to the transportation network by 2045. The following results highlight the results of the OTO investment plan.

Destination 2045
Amendment 5

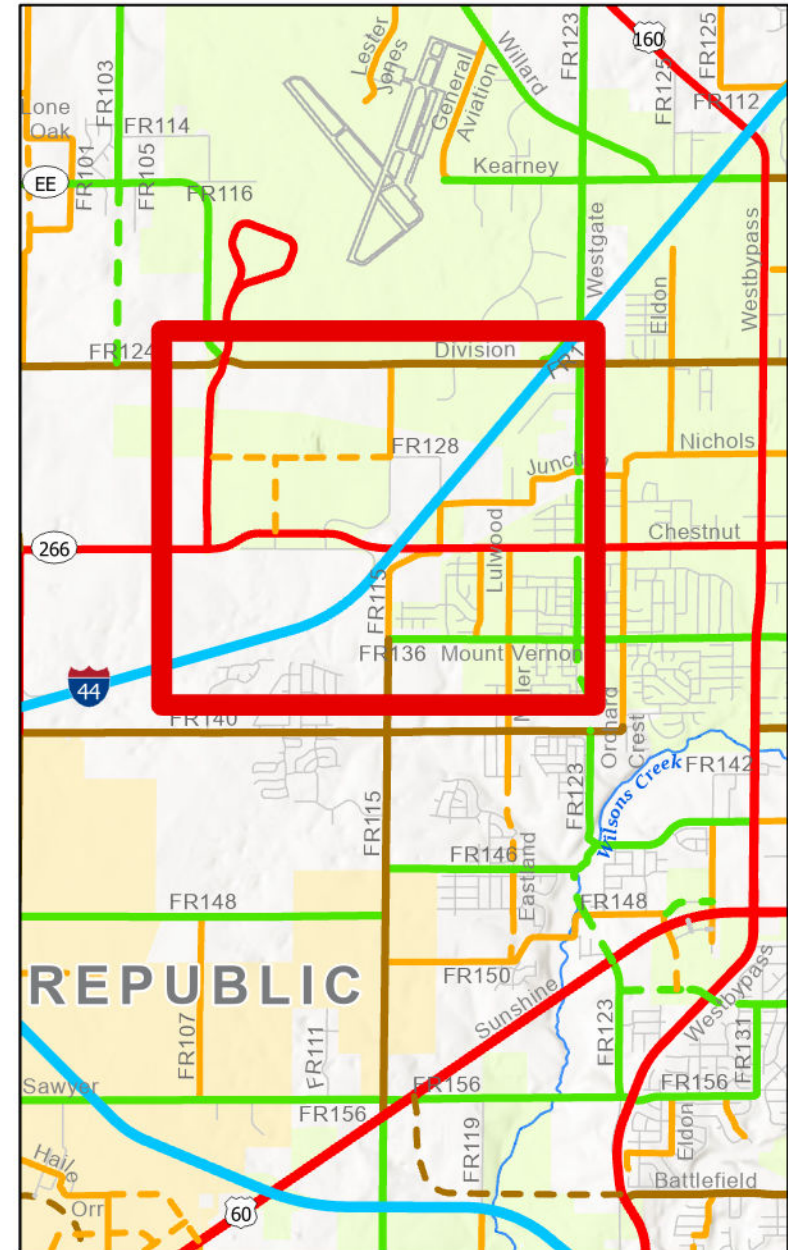
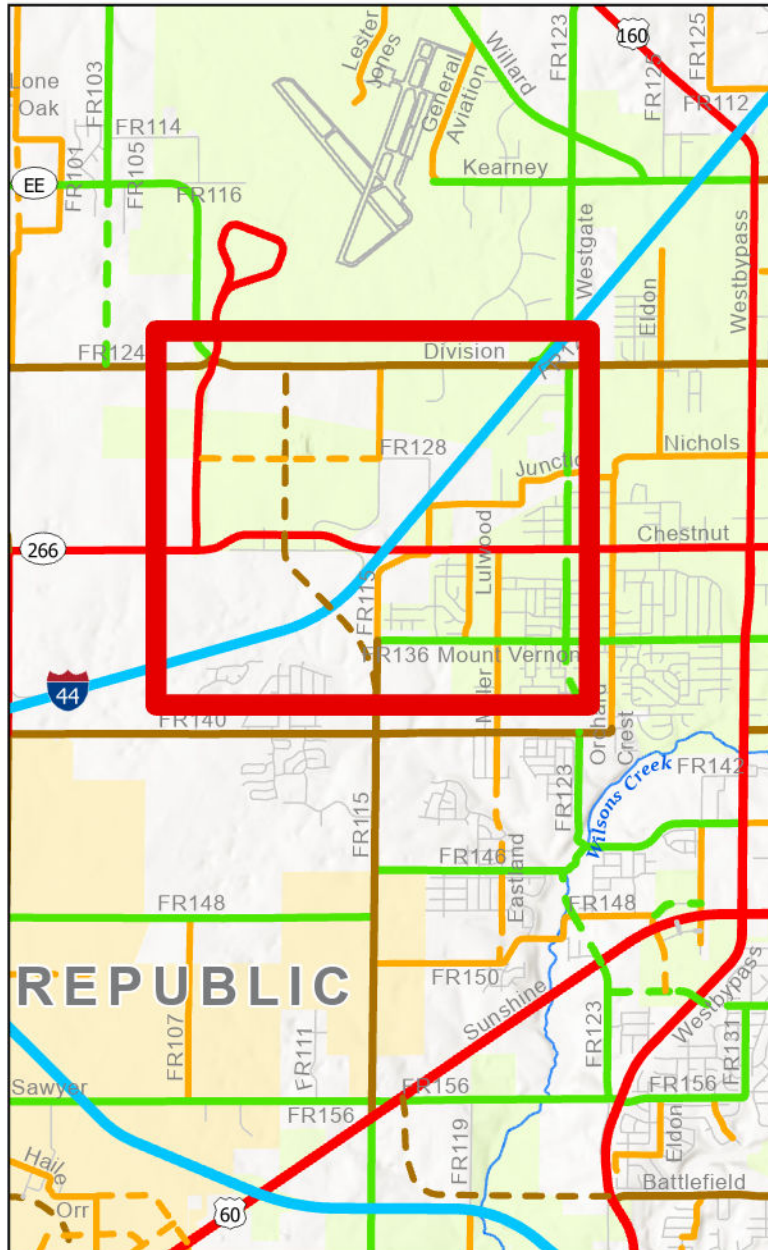
Major Thoroughfare Plan Ozarks Transportation Organization



As Approved by the OTO Board of Directors
July 22, 2022

Proposed

- Existing Roads
- Freeway
- Expressway
- Primary Arterial
- Secondary Arterial
- Collector
- Rural Collector
- Boulevard
- Local
- Proposed Roads
- Proposed Expressway
- Proposed Primary Arterial
- Proposed Secondary Arterial
- Proposed Collector
- Proposed Local





OZARKS TRANSPORTATION ORGANIZATION

A METROPOLITAN PLANNING ORGANIZATION

2208 W. CHESTERFIELD BOULEVARD, SUITE 101, SPRINGFIELD, MO 65807
417-865-3047

Amendment Request Major Thoroughfare Plan

Instructions

Please use this form to submit an amendment request from the OTO Major Thoroughfare Plan. To better process your amendment please fill out the form completely. Upon completion, save the document and email it to info@ozarkstransportation.org or fax it to (417) 862-6013. Changes to the Major Thoroughfare Plan require review and recommendation by the OTO Technical Planning Committee and approval by the OTO Board of Directors.

An Amendment to the Major Thoroughfare Plan is an amendment to the long range transportation plan. Each jurisdiction is required to adopt the amendment they are bringing forth to OTO to ensure consistency between the locally adopted plan and the OTO adopted plan. There will be a fifteen-day public comment period ahead of the OTO Board of Directors meeting where the amendment will be considered.

Application Information

Date: 5/31/2024

Contact Information

Name: Natasha Longpine
Title: Transportation Planning Manager
Agency: Ozarks Transportation Organization
Street Address: 2208 W. Chesterfield Boulevard
Suite 101
City/State/Zip: Springfield, MO 65807
Email: nlongpine@ozarkstransportation.org
Phone: 417-865-3042
Fax: 417-862-6013

Roadway Data

Roadway Name: Deer Lake/Haseltine
Termini of Roadway
From: Farm Road 115
To: Division
Length (miles): Proposed-N/A
Number of Lanes: Proposed-N/A
Lane Width: Proposed-N/A

Amendment Requested and Justification

Current Classification:

The current proposed principal arterial connects Haseltine Road (Farm Road 115) to Division Street through Springfield Underground Inc. property.

Requested Change:

It is proposed to reclassify the proposed roadway to a collector, limit it to Springfield Underground, Inc. property between the Chestnut and the east/west proposed collector, and realign it with Deer Lake Avenue.

Describe Process for Jurisdiction Approval?

The City of Springfield and Greene County are concurrently working through the approval process.

Date of Approval by Jurisdiction

August 19, 2024

Please describe the history causing need for the amendment:

[Click [here](#) and type explanation]

What impacts would this amendment have on future ability to comply with the OTO MTP?

By removing a crossing with I-44 as well as the railroad, compliance with the revised MTP should be easier.

Additional information you would like to include.

[Click [here](#) and type additional information]

Attach a map showing the current and proposed major thoroughfare plan classification or alignment.

Amendment Process (minimum timeframe is 2 months)

- 1. Request.** Requests are accepted at any time for a major thoroughfare plan amendment, however, placement on the Technical Planning Committee agenda will depend upon date received.
- 2. Technical Planning Committee.** The request will be heard at the next available Technical Planning Committee meeting. The Technical Planning Committee will hear the item and make a recommendation to the Board of Directors. The Technical Planning Committee may decide to table the item until a future meeting.
- 3. Board of Directors.** After a recommendation is made by the Technical Planning Committee, the Board will approve or deny the request.

Ozarks Transportation Organization Contact Information

If you have questions or need help regarding this application, please contact us:

Natasha L. Longpine, AICP

nlongpine@ozarkstransportation.org

417.865.3042 x103

417.862.6013 Fax

2208 W. Chesterfield Boulevard, Suite 101
Springfield, MO 65807

June 12, 2024

Sara Fields, AICP
Executive Director
Ozarks Transportation Organization
2208 W. Chesterfield Blvd., Suite 101
Springfield, MO 65807

Dear Sara,

The city has received from your organization a proposal for two amendments to the Major Thoroughfare Plan (MTP), as submitted on May 31. This proposal is in the city's review process and should proceed according to the schedule below:

- July 11 – Planning & Zoning Commission Hearing, following a 15-day advertising period
- August 5 – City Council Hearing
- August 19 – City Council Action

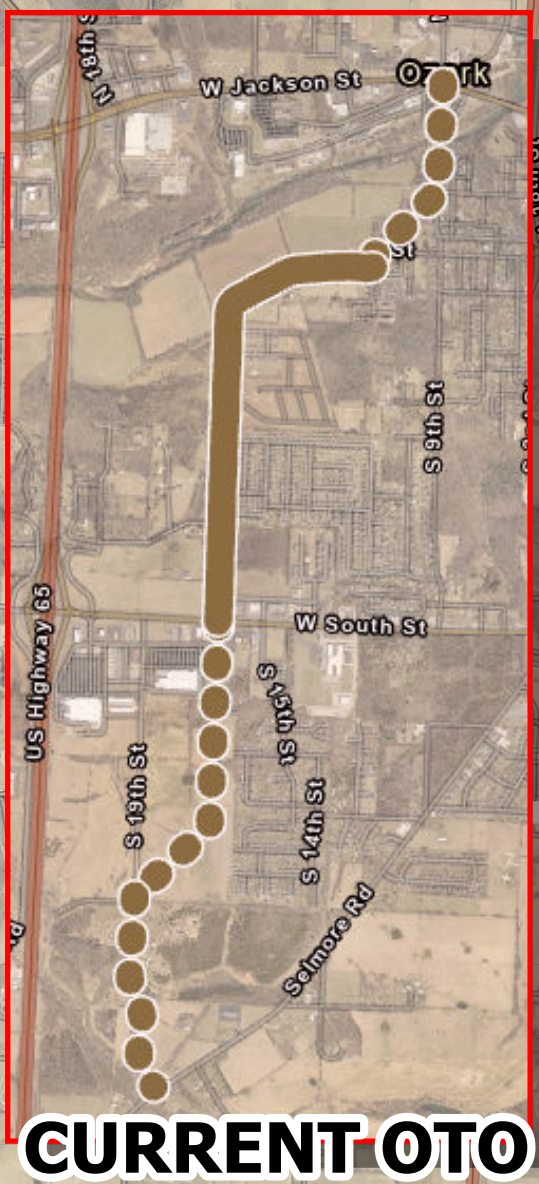
My staff will follow up with you if any deviation is expected from the schedule outlined above. Meanwhile, please let us know if you have any questions or need additional information.

Sincerely,

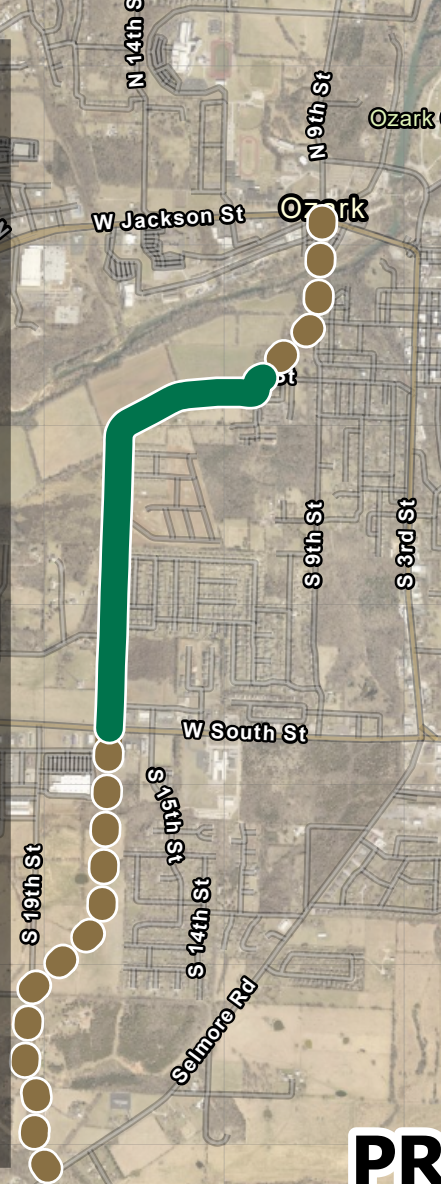

Matt Neal, Acting Director
Director of Public Works

Destination 2045
Amendment 6

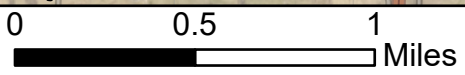
Current Ozark vs OTO MTP Classification With Proposed Changes



CURRENT OTO



PROPOSED CHANGE



LEGEND	
	Primary Arterial
	Proposed Primary Arterial
	Secondary Arterial
	Proposed Secondary Arterial



The City of Ozark
MTP Excerpt

The City of Ozark makes no representations, express or implied, regarding the information's accuracy, completeness, and timeliness. This map is not suitable for legal, engineering, or surveying purposes. Notifications for any errors are appreciated.



CITY OF OZARK
DEPARTMENT OF PUBLIC WORKS
GIS OFFICE
207 E. BRICK ST
OZARK, MISSOURI 65721
417-581-1700 EXT. 1123



OZARKS TRANSPORTATION ORGANIZATION
A METROPOLITAN PLANNING ORGANIZATION

2208 W. CHESTERFIELD BOULEVARD, SUITE 101, SPRINGFIELD, MO 65807
417-865-3047

Amendment Request

Major Thoroughfare Plan

Instructions

Please use this form to submit an amendment request from the OTO Major Thoroughfare Plan. To better process your amendment please fill out the form completely. Upon completion, save the document and email it to info@ozarkstransportation.org or fax it to (417) 862-6013. Changes to the Major Thoroughfare Plan require review and recommendation by the OTO Technical Planning Committee and approval by the OTO Board of Directors.

An Amendment to the Major Thoroughfare Plan is an amendment to the long-range transportation plan. Each jurisdiction is required to adopt the amendment they are bringing forth to OTO to ensure consistency between the locally adopted plan and the OTO adopted plan. There will be a fifteen-day public comment period ahead of the OTO Board of Directors meeting where the amendment will be considered.

Application Information

Date: 6/10/2024

Contact Information

Name: Jeremy Parsons
Title: Public Works Director
Agency: City of Ozark
Street Address: 207 E. Brick St.
65721
City/State/Zip: Ozark, MO 65721
Email: jparsons@ozarkmissouri.org
Phone: 417-581-1702
Fax: 417-581-1708

Roadway Data

Roadway Name: 10th St. and 17th St
Termini
From: Jackson Street
To: Selmore Road

Length (miles): 15,861' or approximately 3 Miles
Number of Lanes: 2
Lane Width: 11'

Amendment Requested and Justification

Current Classification:

Primary Arterial

Requested Change:

Secondary Arterial

Describe Process for Jurisdiction Approval?

Staff would Adopt the Plan Amendment & Take to the Planning and Zoning Commission for recommendations and then to the Board of Aldermen for final Confirmation and adoption of an ordinance.

Date of Approval by Jurisdiction

9/23/2024

Please describe the history causing need for the amendment:

Limited Right-of-Way and the existing physical conditions have initiated this request. Historically, as properties have developed along the 17th St. Corridor, City Staff and the Ozark Special Road District (OSRD) have been collecting a total of 80' of Right-of-Way. After speaking with our planning partners and OSRD's third-party engineer we feel that a secondary arterial is more in line with the current and future needs of Ozark. Additionally, the City's Major Thoroughfare Plan currently identifies this roadway as a Secondary Arterial and we would like for the OTO and Ozark Plans to directly correlate. We have attached a map that illustrates the current and proposed amendment.

What impacts would this amendment have on future ability to comply with the OTO MTP?

No Negative Impacts

Additional information you would like to include.

See Attached Map

Attach a map showing the current and proposed major thoroughfare plan classification or alignment.

Amendment Process (minimum timeframe is 2 months)

1. **Request.** Requests are accepted at any time for a major thoroughfare plan amendment, however, placement on the Technical Planning Committee agenda will depend upon date received.
2. **Technical Planning Committee.** The request will be heard at the next available Technical Planning Committee meeting. The Technical Planning Committee will hear the item and make a recommendation to the Board of Directors. The Technical Planning Committee may decide to table the item until a future meeting.
3. **Board of Directors.** After a recommendation is made by the Technical Planning Committee, the Board will approve or deny the request.

Ozarks Transportation Organization Contact Information

If you have questions or need help regarding this application, please contact us:

Natasha L. Longpine, AICP

nlongpine@ozarkstransportation.org

417.865.3042 x103

417.862.6013 Fax

2208 W. Chesterfield Boulevard, Suite 101

Springfield, MO 65807

DRAFT



CHRISTIAN COUNTY *Resource Management Department*

1106 W. Jackson St.
Ozark, MO 65721

Telephone (417) 581-7242
Fax (417) 581-4623

June 18, 2024

Ozarks Transportation Organization
2208 W. Chesterfield Blvd., Suite 101
Springfield, MO 65807

Re: Letter of Support for Road Classification Changes

Dear OTO Board:

Please accept this letter as confirmation of Christian County's support as it relates to the City of Ozark's proposal to change the classification of 10th St. and 17th St. within the Major Thoroughfare Plan. We believe this change will allow local and regional transportation plans to better mirror one another while also facilitating progress toward the overarching goals of improved connectivity in the local road network and economic development.

Best regards,

A handwritten signature in blue ink, appearing to read "Todd M. Wiesehan".

Todd M. Wiesehan
Director