

2021 PERFORMANCE MEASURES

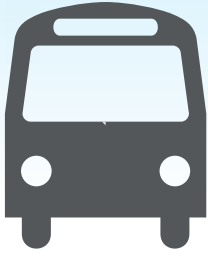
Ozarks Transportation Organization's long-range transportation plan sets performance measures as a way for OTO to monitor the success of the regional transportation system.
11 MEASURES WITH TARGETS FOR 2035



OZARKS TRANSPORTATION ORGANIZATION
 A METROPOLITAN PLANNING ORGANIZATION

On-Time Performance of Transit System

A higher value is better.



Target: Under Review

Average Commute Time (2015-2019)

A lower value is better.

Christian County	25.0 min.	↓
Greene County	19.9 min.	↓
Battlefield	22.2 min.	↓
Fremont Hills	22.5 min.	↑
Nixa	24.7 min.	↓
Ozark	22.4 min.	↓
Republic	25.5 min.	↑
Springfield	18.1 min.	↓
Strafford	23.0 min.	↑
Willard	22.6 min.	↓

Average of OTO Cities 22.6 min. ↓

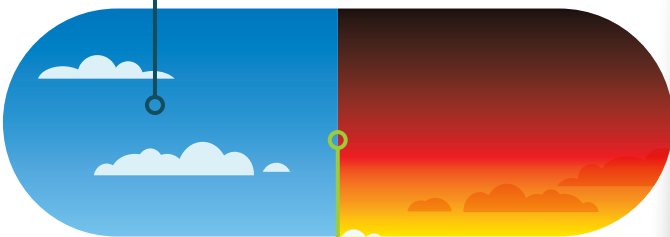
Target: Keep the average commute time less than 25 minutes by 2035

Ozone Levels

A lower value is better.

59 2019-2021 | 59 2018-2020 | 61 2017-2019

Target: Stay below standard of 70 ppb



Significantly Delayed Roadways

A lower value is better.

AM	PM
1.06% 2021	10.2%
1.4% 2020	8.9%
2% 2018	16%

Target: Less than 20%

Bridges in Fair or Better Condition

A higher value is better.

94.4% 2021 | 93.6% 2020 | 94.6% 2019

Target: Bridges in fair or better condition over 90%

Crash Rate For Disabling Injuries & Fatalities

A lower value is better.

12.44 2021 | 12.83 2020 | 9.6 2019

Target: Downward Trend

Percent of Roadways in Good Condition

A higher value is better.

97 2021 | 98 2020 | 97 2019

Target: More than 85% of Major Roads in Good Condition

Percent Driving Alone

A lower value is better.

83 2016-2020 | 84 2015-2019 | 84 2014-2018

Target: Decrease to less than 75% by 2035

Percent of Housing Units within 1/4-mile of a Bus Route

A higher value is better.

OTO Area	CU Service Area
44 2021	82
45 2020	83
47 2010	84

Target: Upward Trend

Daily Vehicle Miles Traveled per Capita

A lower value is better.

15.98 2021 | 14.88 2020 | 16.72 2019

Target: Less than 19.0 by 2035

Trail/Sidewalk Network Completion

A higher value is better.

Bicycle	Pedestrian
68.93 mi 2021	33.54%
67.81 mi 2020	N/A
65.44 mi 2019	32.64%

Target: More than 35% roads with sidewalks and more than 80 miles of greenway by 2035

