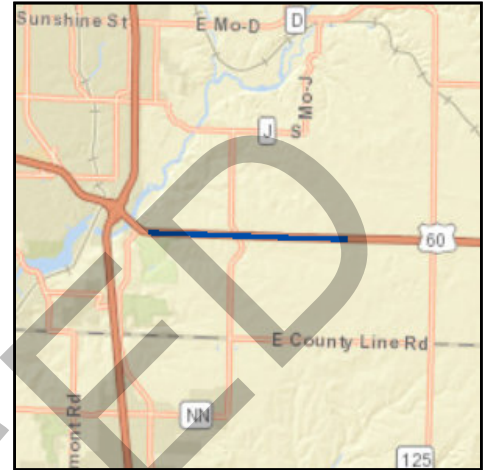




J) Pending Amendment Section

TIP # GR1403-18A1 SCOPING FOR FREEWAY IMPROVEMENTS ON RTE. 60 EAST

Route US 60
From Highland Springs Road
To Farm Road 213
Location Greene County
Federal Agency FHWA
Project Sponsor MoDOT
Federal Funding Category NHPP(NHS)
MoDOT Funding Category Flexible and Other
Bike/Ped Plan? **EJ?** Yes
STIP # 8P0683G
Federal ID # 0602094



Project Description

Scoping for freeway improvements on Rte. 60 from 0.2 miles west of Highland Springs Road to 0.3 miles east of Farm Road 213.

Fund Code	Source	Phase	FY2018	FY2019	FY2020	FY2021	Total
FHWA (NHPP)	Federal	ENG	\$68,000	\$8,000	\$8,000	\$8,000	\$92,000
MoDOT	State	ENG	\$17,000	\$2,000	\$2,000	\$2,000	\$23,000
Totals			\$85,000	\$10,000	\$10,000	\$10,000	\$115,000

PROPOSED

Notes

Non-Federal Funding Source: State Transportation Revenues

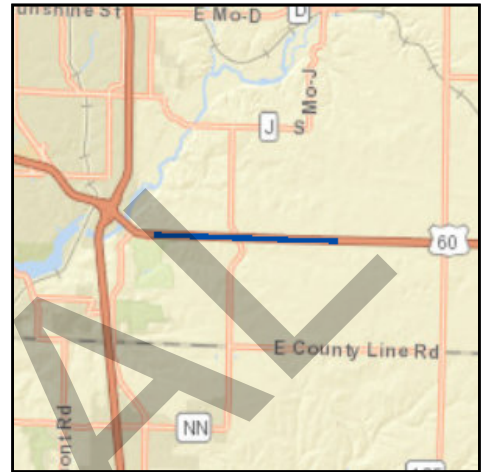
Prior Cost	\$16,000
Future Cost	\$0
Total Cost	\$131,000



E) Roadways Section

TIP # GR1403 SCOPING FOR FREEWAY IMPROVEMENTS ON RTE. 60 EAST

Route US 60
From Highland Springs Road
To Farm Road 213
Location Greene County
Federal Agency FHWA
Project Sponsor MoDOT
Federal Funding Category NHPP(NHS)
MoDOT Funding Category Flexible and Other
Bike/Ped Plan? EJ? Yes
STIP # 8P0683G
Federal ID # 0602094



Project Description

Scoping for freeway improvements on Rte. 60 from 0.2 miles west of Highland Springs Road to 0.3 miles east of Farm Road 213.

Fund Code	Source	Phase	FY2018	FY2019	FY2020	FY2021	Total
FHWA (NHPP)	Federal	ENG	\$8,000	\$8,000	\$8,000	\$8,000	\$32,000
MoDOT	State	ENG	\$2,000	\$2,000	\$2,000	\$2,000	\$8,000
Totals			\$10,000	\$10,000	\$10,000	\$10,000	\$40,000

ORIGINAL

Notes

Non-Federal Funding Source: State Transportation Revenues

Prior Cost	\$16,000
Future Cost	\$0
Total Cost	\$56,000



J) Pending Amendment Section

TIP # RG0901-18A1 **SCOPING FOR INTERCHANGE AT ROUTE 60 & ROUTE 125**

Route US 60 and Route 125

From Farm Road 213

To Farm Road 247

Location Greene County

Federal Agency FHWA

Project Sponsor MoDOT

Federal Funding Category NHPP(NHS)

MoDOT Funding Category Flexible and Other

Bike/Ped Plan? **EJ?** **Yes**

STIP # 8P0683E

Federal ID # 0602093



Project Description

Scoping for freeway improvements from Farm Road 213 to Farm Road 247.

Fund Code	Source	Phase	FY2018	FY2019	FY2020	FY2021	Total
FHWA (NHPP)	Federal	ENG	\$68,000	\$8,000	\$8,000	\$8,000	\$92,000
MoDOT	State	ENG	\$17,000	\$2,000	\$2,000	\$2,000	\$23,000
Totals			\$85,000	\$10,000	\$10,000	\$10,000	\$115,000

Notes

Non-Federal Funding Source: State Transportation Revenues

Prior Cost	\$308,000
Future Cost	\$0
Total Cost	\$423,000



E) Roadways Section

TIP # RG0901 **SCOPING FOR INTERCHANGE AT ROUTE 60 & ROUTE 125**

Route US 60 and Route 125

From Farm Road 213

To Farm Road 247

Location Greene County

Federal Agency FHWA

Project Sponsor MoDOT

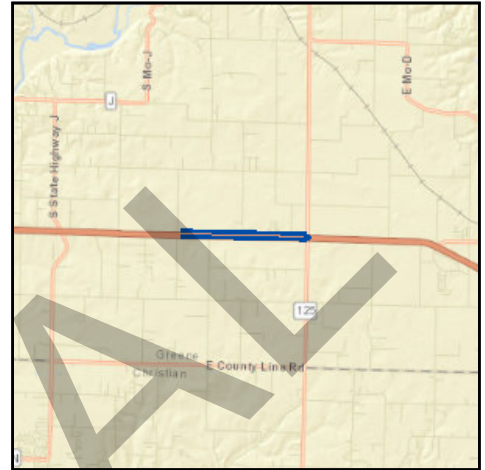
Federal Funding Category NHPP(NHS)

MoDOT Funding Category Flexible and Other

Bike/Ped Plan? **EJ?** Yes

STIP # 8P0683E

Federal ID # 0602093



Project Description

Scoping for interchange improvements at Rte. 125 and outer roads from Farm Road 213 to Farm Road 247.

Fund Code	Source	Phase	FY2018	FY2019	FY2020	FY2021	Total
FHWA (NHPP)	Federal	ENG	\$8,000	\$8,000	\$8,000	\$8,000	\$32,000
MoDOT	State	ENG	\$2,000	\$2,000	\$2,000	\$2,000	\$8,000
Totals			\$10,000	\$10,000	\$10,000	\$10,000	\$40,000

ORIGINAL

Notes

Non-Federal Funding Source: State Transportation Revenues

Prior Cost	\$308,000
Future Cost	\$0
Total Cost	\$348,000



J) Pending Amendment Section

TIP # SP1405-18A1 SCOPING FOR JAMES RIVER FREEWAY CAPACITY IMPROVEMENTS

Route US 60
From Rte. 13
To Rte. 65

Location City of Springfield

Federal Agency FHWA

Project Sponsor MoDOT

Federal Funding Category NHPP(NHS)

MoDOT Funding Category Flexible and Other

Bike/Ped Plan? **EJ?** Yes

STIP # 8P3032

Federal ID # 0602095



Project Description

Scoping for capacity improvements on James River Freeway from north of I-44 in Republic to Rte. 65 in Springfield.

Fund Code	Source	Phase	FY2018	FY2019	FY2020	FY2021	Total
FHWA (NHPP)	Federal	ENG	\$121,600	\$40,000	\$40,000	\$0	\$201,600
MoDOT	State	ENG	\$30,400	\$10,000	\$10,000	\$0	\$50,400
Totals			\$152,000	\$50,000	\$50,000	\$0	\$252,000

Notes

Non-Federal Funding Source: State Transportation Revenues

Prior Cost	\$8,000
Future Cost	\$0
Total Cost	\$260,000



E) Roadways Section

TIP # SP1405 SCOPING FOR JAMES RIVER FREEWAY CAPACITY IMPROVEMENTS

Route US 60

From Rte. 13

To Rte. 65

Location City of Springfield

Federal Agency FHWA

Project Sponsor MoDOT

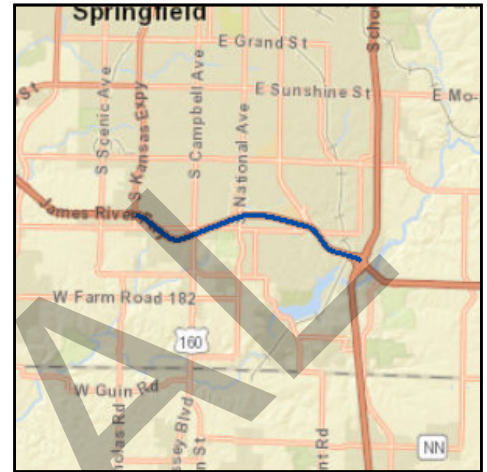
Federal Funding Category NHPP(NHS)

MoDOT Funding Category Flexible and Other

Bike/Ped Plan? **EJ?** Yes

STIP # 8P3032

Federal ID # 0602095



Project Description

Scoping for capacity improvements on James River Freeway from Kansas Expressway (Rte. 13) to Rte. 65.

Fund Code	Source	Phase	FY2018	FY2019	FY2020	FY2021	Total
FHWA (NHPP)	Federal	ENG	\$1,600	\$1,600	\$0	\$0	\$3,200
MoDOT	State	ENG	\$400	\$400	\$0	\$0	\$800
Totals			\$2,000	\$2,000	\$0	\$0	\$4,000

ORIGINAL

Notes

Non-Federal Funding Source: State Transportation Revenues

Prior Cost	\$8,000
Future Cost	\$0
Total Cost	\$12,000



J) Pending Amendment Section

TIP # SP1419-18A1 **SCOPING FOR I-44 ROADWAY IMPROVEMENTS**

Route I-44
From Chestnut Expressway
To Mulroy Rd.
Location City of Springfield
Federal Agency FHWA
Project Sponsor MoDOT
Federal Funding Category NHPP(I/M)
MoDOT Funding Category Flexible and Other
Bike/Ped Plan? **EJ?** Yes
STIP # 813044
Federal ID #



Project Description

Scoping for roadway improvements from Rte. 360 north of Republic to Rte. 125 in Strafford.

Fund Code	Source	Phase	FY2018	FY2019	FY2020	FY2021	Total
FHWA (I/M)	Federal	ENG	\$128,000	\$40,000	\$9,000	\$9,000	\$186,000
MoDOT	State	ENG	\$32,000	\$10,000	\$1,000	\$1,000	\$44,000
Totals			\$160,000	\$50,000	\$10,000	\$10,000	\$230,000

Notes

Non-Federal Funding Source: State Transportation Revenues

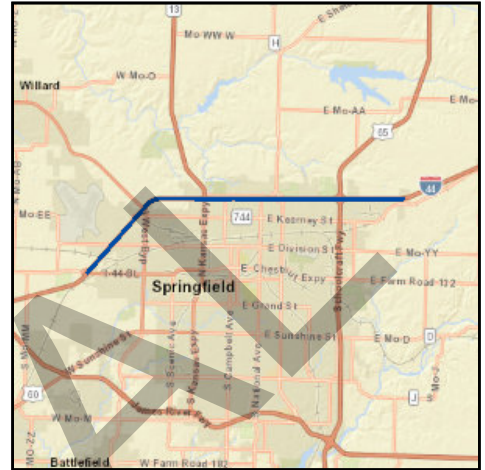
Prior Cost	\$10,000
Future Cost	\$0
Total Cost	\$240,000



E) Roadways Section

TIP # SP1419 **SCOPING FOR I-44 ROADWAY IMPROVEMENTS**

Route I-44
From Chestnut Expressway
To Mulroy Rd.
Location City of Springfield
Federal Agency FHWA
Project Sponsor MoDOT
Federal Funding Category NHPP(I/M)
MoDOT Funding Category Flexible and Other
Bike/Ped Plan? **EJ?** **Yes**
STIP # 813044
Federal ID #



Project Description

Scoping for roadway improvements on I-44 from Chestnut Expressway (Loop 44) to Mulroy Rd. (Rte. 744) in Springfield.

Fund Code	Source	Phase	FY2018	FY2019	FY2020	FY2021	Total
FHWA (I/M)	Federal	ENG	\$9,000	\$9,000	\$9,000	\$9,000	\$36,000
MoDOT	State	ENG	\$1,000	\$1,000	\$1,000	\$1,000	\$4,000
Totals			\$10,000	\$10,000	\$10,000	\$10,000	\$40,000

ORIGINAL

Notes

Non-Federal Funding Source: State Transportation Revenues

Prior Cost	\$10,000
Future Cost	\$0
Total Cost	\$50,000

FINANCIAL SUMMARY

Roadways

YEARLY SUMMARY

PROJECT	Federal												Local	State			TOTAL	
	FHWA (STBG-U)	FHWA (SAFETY)	FHWA (BRIDGE)	FHWA (STBG)	FHWA (UM)	FHWA (130)	FHWA (NHS)	FHWA (BRM)	FHWA (BRO)	FHWA (NHPP)	FHWA (HPP)	FEMA	LOCAL	MoDOT	MoDOT-GCSA	MoDOT-AC		SEMA
2018																		
BA1801-18	\$0	\$0	\$0	\$0	\$0	\$0	\$0	\$0	\$0	\$1,600	\$0	\$0	\$0	\$400	\$0	\$0	\$0	\$2,000
CC0901	\$0	\$0	\$0	\$1,600	\$0	\$0	\$0	\$0	\$0	\$0	\$0	\$0	\$0	\$400	\$0	\$0	\$0	\$2,000
CC1102	\$0	\$0	\$0	\$0	\$0	\$0	\$0	\$0	\$0	\$1,680,000	\$0	\$0	\$0	\$420,000	\$0	\$0	\$0	\$2,100,000
CC1601	\$0	\$900	\$0	\$0	\$0	\$0	\$0	\$0	\$0	\$0	\$0	\$0	\$0	\$100	\$0	\$0	\$0	\$1,000
CC1701	\$0	\$0	\$0	\$457,600	\$0	\$0	\$0	\$0	\$0	\$0	\$0	\$0	\$0	\$114,400	\$0	\$0	\$0	\$572,000
CC1702	\$0	\$196,000	\$0	\$584,000	\$0	\$0	\$0	\$0	\$0	\$0	\$0	\$0	\$0	\$195,000	\$0	\$0	\$0	\$975,000
CC1703	\$0	\$0	\$0	\$4,000	\$0	\$0	\$0	\$0	\$0	\$0	\$0	\$0	\$0	\$1,000	\$0	\$0	\$0	\$5,000
CC1801	\$0	\$0	\$0	\$19,200	\$0	\$0	\$0	\$0	\$0	\$0	\$0	\$0	\$0	\$4,800	\$0	\$0	\$0	\$24,000
CC1802	\$0	\$0	\$0	\$0	\$0	\$0	\$0	\$0	\$0	\$80,000	\$0	\$0	\$0	\$20,000	\$0	\$0	\$0	\$100,000
CC1803-18	\$0	\$72,000	\$0	\$0	\$0	\$0	\$0	\$0	\$0	\$0	\$0	\$0	\$0	\$8,000	\$0	\$0	\$0	\$80,000
GR1403-18A1	\$0	\$0	\$0	\$0	\$0	\$0	\$0	\$0	\$0	\$68,000	\$0	\$0	\$0	\$17,000	\$0	\$0	\$0	\$85,000
GR1501	\$180,119	\$0	\$0	\$0	\$0	\$0	\$0	\$0	\$0	\$0	\$0	\$0	\$45,030	\$0	\$0	\$0	\$0	\$225,149
GR1701	\$0	\$0	\$0	\$688,000	\$0	\$0	\$0	\$0	\$0	\$0	\$0	\$0	\$0	\$167,000	\$0	\$0	\$0	\$855,000
GR1703	\$0	\$0	\$0	\$1,600	\$0	\$0	\$0	\$0	\$0	\$0	\$0	\$0	\$0	\$400	\$0	\$0	\$0	\$2,000
GR1704	\$0	\$0	\$0	\$1,600	\$0	\$0	\$0	\$0	\$0	\$0	\$0	\$0	\$0	\$400	\$0	\$0	\$0	\$2,000
GR1705	\$0	\$0	\$0	\$15,200	\$0	\$0	\$0	\$0	\$0	\$0	\$0	\$0	\$0	\$3,800	\$0	\$0	\$0	\$19,000
GR1706	\$0	\$0	\$0	\$415,200	\$0	\$0	\$0	\$0	\$0	\$0	\$0	\$0	\$0	\$103,800	\$0	\$0	\$0	\$519,000
GR1707-17A6	\$0	\$0	\$0	\$0	\$0	\$0	\$0	\$0	\$0	\$0	\$0	\$0	\$51,000	\$0	\$0	\$0	\$51,000	
GR1801-18	\$0	\$22,500	\$0	\$0	\$0	\$0	\$0	\$0	\$0	\$0	\$0	\$0	\$0	\$2,500	\$0	\$0	\$0	\$25,000
GR1802-18	\$0	\$0	\$0	\$84,000	\$0	\$0	\$0	\$0	\$0	\$0	\$0	\$0	\$0	\$21,000	\$0	\$0	\$0	\$105,000
GR1803-18	\$0	\$0	\$0	\$0	\$0	\$0	\$0	\$0	\$0	\$988,800	\$0	\$0	\$0	\$247,200	\$0	\$0	\$0	\$1,236,000
GR1804-18	\$0	\$0	\$0	\$0	\$0	\$0	\$0	\$0	\$0	\$1,600	\$0	\$0	\$0	\$400	\$0	\$0	\$0	\$2,000
GR1805-18	\$0	\$0	\$0	\$800	\$0	\$0	\$0	\$0	\$0	\$0	\$0	\$0	\$0	\$200	\$0	\$0	\$0	\$1,000
MO1105	\$0	\$0	\$0	\$0	\$0	\$0	\$0	\$0	\$0	\$0	\$0	\$0	\$0	\$284,000	\$0	\$0	\$0	\$284,000
MO1616	\$0	\$0	\$0	\$0	\$0	\$0	\$0	\$0	\$0	\$3,036,800	\$0	\$0	\$0	\$759,200	\$0	\$0	\$0	\$3,796,000
MO1705	\$0	\$0	\$0	\$800	\$0	\$0	\$0	\$0	\$0	\$0	\$0	\$0	\$0	\$200	\$0	\$0	\$0	\$1,000
MO1708	\$0	\$162,000	\$0	\$0	\$0	\$0	\$0	\$0	\$0	\$0	\$0	\$0	\$0	\$18,000	\$0	\$0	\$0	\$180,000
MO1709	\$0	\$1,800	\$0	\$0	\$0	\$0	\$0	\$0	\$0	\$0	\$0	\$0	\$0	\$200	\$0	\$0	\$0	\$2,000
MO1710-17A2	\$0	\$0	\$0	\$105,600	\$0	\$0	\$0	\$0	\$0	\$0	\$0	\$0	\$0	\$26,400	\$0	\$0	\$0	\$132,000
MO1711	\$0	\$0	\$0	\$8,000	\$0	\$0	\$0	\$0	\$0	\$0	\$0	\$0	\$0	\$2,000	\$0	\$0	\$0	\$10,000
MO1712	\$0	\$0	\$0	\$0	\$0	\$0	\$0	\$0	\$0	\$1,600	\$0	\$0	\$0	\$400	\$0	\$0	\$0	\$2,000
MO1713	\$0	\$3,116,700	\$0	\$0	\$0	\$0	\$0	\$0	\$0	\$0	\$0	\$0	\$0	\$346,300	\$0	\$0	\$0	\$3,463,000
MO1714	\$0	\$0	\$0	\$0	\$0	\$0	\$0	\$0	\$0	\$1,600	\$0	\$0	\$0	\$400	\$0	\$0	\$0	\$2,000
MO1716	\$315,000	\$0	\$0	\$471,200	\$0	\$0	\$0	\$0	\$0	\$0	\$0	\$0	\$78,750	\$117,800	\$0	\$0	\$0	\$982,750
MO1717	\$0	\$0	\$0	\$800	\$0	\$0	\$0	\$0	\$0	\$0	\$0	\$0	\$0	\$200	\$0	\$0	\$0	\$1,000
MO1719	\$0	\$0	\$0	\$0	\$0	\$0	\$0	\$0	\$0	\$38,400	\$0	\$0	\$0	\$9,600	\$0	\$0	\$0	\$48,000
MO1720	\$0	\$0	\$0	\$0	\$0	\$0	\$0	\$0	\$0	\$4,000	\$0	\$0	\$0	\$1,000	\$0	\$0	\$0	\$5,000
MO1721	\$0	\$27,000	\$0	\$0	\$0	\$0	\$0	\$0	\$0	\$0	\$0	\$0	\$0	\$3,000	\$0	\$0	\$0	\$30,000
MO1722	\$0	\$0	\$0	\$0	\$0	\$0	\$0	\$0	\$0	\$16,800	\$0	\$0	\$0	\$4,200	\$0	\$0	\$0	\$21,000
MO1723	\$0	\$0	\$0	\$3,200	\$0	\$0	\$0	\$0	\$0	\$0	\$0	\$0	\$0	\$800	\$0	\$0	\$0	\$4,000
MO1803-18	\$0	\$900	\$0	\$0	\$0	\$0	\$0	\$0	\$0	\$0	\$0	\$0	\$0	\$100	\$0	\$0	\$0	\$1,000
MO1804-18	\$0	\$0	\$0	\$800	\$0	\$0	\$0	\$0	\$0	\$0	\$0	\$0	\$0	\$200	\$0	\$0	\$0	\$1,000
MO1805-18	\$0	\$0	\$0	\$112,000	\$0	\$0	\$0	\$0	\$0	\$0	\$0	\$0	\$0	\$28,000	\$0	\$0	\$0	\$140,000
MO1806-18	\$0	\$0	\$0	\$72,000	\$0	\$0	\$0	\$0	\$0	\$0	\$0	\$0	\$0	\$18,000	\$0	\$0	\$0	\$90,000
MO1807-18	\$0	\$0	\$0	\$0	\$0	\$0	\$0	\$0	\$0	\$0	\$0	\$0	\$0	\$11,500	\$0	\$103,500	\$0	\$115,000
MO1808-18	\$0	\$0	\$0	\$0	\$0	\$0	\$0	\$0	\$0	\$0	\$0	\$0	\$0	\$21,900	\$0	\$197,100	\$0	\$219,000
NX1701	\$0	\$0	\$0	\$0	\$0	\$0	\$0	\$0	\$0	\$964,000	\$0	\$0	\$0	\$580,000	\$0	\$0	\$0	\$1,544,000
NX1702	\$0	\$0	\$0	\$1,029,600	\$0	\$0	\$0	\$0	\$0	\$0	\$0	\$0	\$0	\$257,400	\$0	\$0	\$0	\$1,287,000
NX1703	\$0	\$0	\$0	\$188,000	\$0	\$0	\$0	\$0	\$0	\$0	\$0	\$0	\$0	\$47,000	\$0	\$0	\$0	\$235,000
NX1704	\$0	\$0	\$0	\$0	\$0	\$0	\$0	\$0	\$0	\$1,600	\$0	\$0	\$0	\$400	\$0	\$0	\$0	\$2,000
NX1705	\$0	\$0	\$0	\$0	\$0	\$0	\$0	\$0	\$0	\$68,800	\$0	\$0	\$0	\$17,200	\$0	\$0	\$0	\$86,000
NX1801-17A2	\$54,400	\$0	\$0	\$0	\$0	\$0	\$0	\$0	\$0	\$37,600	\$0	\$0	\$13,600	\$9,400	\$0	\$0	\$0	\$115,000
OK1401-17A2	\$0	\$0	\$0	\$110,400	\$0	\$0	\$0	\$0	\$0	\$0	\$0	\$0	\$0	\$27,600	\$0	\$0	\$0	\$138,000
OK1701	\$0	\$0	\$0	\$161,600	\$0	\$0	\$0	\$0	\$0	\$0	\$0	\$0	\$0	\$40,400	\$0	\$0	\$0	\$202,000
OK1702	\$0	\$0	\$0	\$3,068,800	\$0	\$0	\$0	\$0	\$0	\$0	\$0	\$0	\$204,924	\$562,276	\$0	\$0	\$0	\$3,836,000
OK1703	\$0	\$0	\$0	\$5,981,600	\$0	\$0	\$0	\$0	\$0	\$0	\$0	\$0	\$0	\$1,495,400	\$0	\$0	\$0	\$7,477,000
OK1801-17A2	\$1,716,720	\$0	\$0	\$1,456,080	\$0	\$0	\$0	\$0	\$0	\$0	\$0	\$0	\$429,180	\$364,020	\$0	\$0	\$0	\$3,966,000
OK1802-17A5	\$626,722	\$0	\$0	\$0	\$0	\$0	\$0	\$0	\$0	\$574,959	\$0	\$580,494	\$489,626	\$0	\$0	\$0	\$96,749	\$2,368,550
OK1803	\$0	\$0	\$0	\$0	\$0	\$0	\$0	\$0	\$0	\$16,000	\$0	\$0	\$0	\$4,000	\$0	\$0	\$0	\$20,000
RG0901-18A1	\$0	\$0	\$0	\$0	\$0	\$0	\$0	\$0	\$0	\$68,000	\$0	\$0	\$0	\$17,000	\$0	\$0	\$0	\$85,000
RG1201	\$0	\$0	\$0	\$0	\$0	\$0	\$0	\$0	\$0	\$800	\$0	\$0	\$0	\$200	\$0	\$0	\$0	\$1,000
RP1502	\$1,702,503	\$0	\$0	\$0	\$0	\$0	\$0	\$0	\$0	\$0	\$0	\$0	\$496,128	\$0	\$0	\$0	\$0	\$2,198,631
RP1701	\$0	\$0	\$0	\$0	\$0	\$0	\$0	\$0	\$0	\$8,000	\$0	\$0	\$0	\$2,000	\$0	\$0	\$0	\$10,000
RP1702	\$0	\$7,000	\$0	\$184,200	\$0	\$0	\$0	\$0	\$0	\$0	\$0	\$0	\$0	\$47,800	\$0	\$0	\$0	\$239,000
RP1703-17A3	\$0	\$0	\$0	\$1,600	\$0	\$0	\$0	\$0	\$0	\$0	\$0	\$0	\$0	\$400	\$0	\$0	\$0	\$2,000
RP1704-17A3	\$0	\$0	\$0	\$1,600	\$0	\$0	\$0	\$0	\$0	\$0	\$0	\$0	\$0	\$400	\$0	\$0	\$0	\$2,000
RP1801-17A2	\$772,160	\$704,556	\$0	\$0	\$0	\$0	\$0	\$0	\$0	\$0	\$0	\$0	\$193,040	\$78,284	\$0	\$0	\$0	\$1,748,040

FY 2018 continued on next page

FINANCIAL SUMMARY

Roadways

YEARLY SUMMARY

PROJECT	Federal											Local		State				TOTAL
	FHWA (STBG-U)	FHWA (SAFETY)	FHWA (BRIDGE)	FHWA (STBG)	FHWA (UM)	FHWA (130)	FHWA (NHS)	FHWA (BRM)	FHWA (BRO)	FHWA (NHPP)	FHWA (HPP)	FEMA	LOCAL	MoDOT	MoDOT-GCSA	MoDOT-AC	SEMA	
2018 Continued																		
RP1802-18	\$0	\$0	\$0	\$0	\$0	\$0	\$0	\$0	\$0	\$1,600	\$0	\$0	\$0	\$400	\$0	\$0	\$0	\$2,000
RP1803-18	\$0	\$0	\$0	\$0	\$0	\$0	\$0	\$0	\$0	\$0	\$0	\$0	\$0	\$400	\$0	\$1,600	\$0	\$2,000
SP1106	\$154,525	\$0	\$0	\$276,882	\$0	\$0	\$0	\$0	\$0	\$0	\$0	\$38,631	\$69,221	\$0	\$0	\$0	\$539,259	
SP1112	\$1,110,295	\$0	\$0	\$0	\$0	\$0	\$0	\$0	\$0	\$1,883,198	\$166,134	\$0	\$0	\$748,373	\$0	\$0	\$3,908,000	
SP1122	\$0	\$0	\$0	\$115,000	\$0	\$0	\$0	\$0	\$0	\$0	\$0	\$0	\$0	\$0	\$0	\$0	\$115,000	
SP1204	\$0	\$0	\$0	\$0	\$0	\$0	\$0	\$0	\$0	\$1,012,000	\$0	\$0	\$0	\$253,000	\$0	\$0	\$1,265,000	
SP1209	\$0	\$0	\$0	\$3,840	\$0	\$0	\$0	\$0	\$0	\$0	\$0	\$960	\$0	\$0	\$0	\$0	\$4,800	
SP1401	\$0	\$0	\$0	\$0	\$0	\$0	\$0	\$0	\$0	\$1,600	\$0	\$0	\$0	\$400	\$0	\$0	\$2,000	
SP1405-18A1	\$0	\$0	\$0	\$0	\$0	\$0	\$0	\$0	\$0	\$121,600	\$0	\$0	\$0	\$30,400	\$0	\$0	\$152,000	
SP1419-18A1	\$0	\$0	\$0	\$0	\$128,000	\$0	\$0	\$0	\$0	\$0	\$0	\$0	\$0	\$32,000	\$0	\$0	\$160,000	
SP1701	\$0	\$0	\$0	\$0	\$0	\$0	\$0	\$0	\$0	\$315,200	\$0	\$0	\$0	\$78,800	\$0	\$0	\$394,000	
SP1704	\$0	\$0	\$0	\$0	\$0	\$0	\$0	\$0	\$0	\$8,000	\$0	\$0	\$0	\$2,000	\$0	\$0	\$10,000	
SP1705	\$0	\$0	\$0	\$0	\$0	\$0	\$0	\$0	\$0	\$108,000	\$0	\$0	\$0	\$27,000	\$0	\$0	\$135,000	
SP1707	\$0	\$0	\$0	\$4,000	\$0	\$0	\$0	\$0	\$0	\$0	\$0	\$0	\$1,000	\$0	\$0	\$0	\$5,000	
SP1708	\$0	\$0	\$0	\$0	\$0	\$0	\$0	\$0	\$0	\$1,600	\$0	\$0	\$0	\$400	\$0	\$0	\$2,000	
SP1709	\$0	\$0	\$0	\$0	\$0	\$0	\$0	\$0	\$0	\$16,000	\$0	\$0	\$0	\$4,000	\$0	\$0	\$20,000	
SP1710	\$0	\$0	\$0	\$0	\$0	\$0	\$0	\$0	\$0	\$1,600	\$0	\$0	\$0	\$400	\$0	\$0	\$2,000	
SP1714-17A2	\$1,600,000	\$0	\$0	\$0	\$0	\$0	\$0	\$0	\$0	\$0	\$0	\$400,000	\$0	\$0	\$0	\$0	\$2,000,000	
SP1801-18	\$0	\$0	\$0	\$0	\$0	\$0	\$0	\$0	\$0	\$40,000	\$0	\$0	\$0	\$10,000	\$0	\$0	\$50,000	
SP1802-18	\$0	\$0	\$0	\$0	\$0	\$0	\$0	\$0	\$0	\$40,000	\$0	\$0	\$0	\$10,000	\$0	\$0	\$50,000	
SP1803-18	\$0	\$0	\$1,600	\$0	\$0	\$0	\$0	\$0	\$0	\$0	\$0	\$0	\$0	\$400	\$0	\$0	\$2,000	
SP1804-18	\$0	\$0	\$0	\$620,000	\$0	\$0	\$0	\$0	\$0	\$0	\$0	\$0	\$0	\$155,000	\$0	\$0	\$775,000	
SP1805-18	\$0	\$0	\$0	\$0	\$1,800	\$0	\$0	\$0	\$0	\$0	\$0	\$0	\$0	\$200	\$0	\$0	\$2,000	
SP1806-18	\$0	\$0	\$0	\$0	\$851,400	\$0	\$0	\$0	\$0	\$0	\$0	\$0	\$0	\$94,600	\$0	\$0	\$946,000	
SP1807-18	\$0	\$184,500	\$0	\$0	\$0	\$0	\$0	\$0	\$0	\$0	\$0	\$0	\$0	\$20,500	\$0	\$0	\$205,000	
SP1808-18	\$0	\$0	\$0	\$0	\$0	\$0	\$0	\$0	\$0	\$52,800	\$0	\$0	\$0	\$13,200	\$0	\$0	\$66,000	
SP1809-18	\$0	\$0	\$0	\$0	\$0	\$0	\$0	\$0	\$0	\$1,600	\$0	\$0	\$0	\$400	\$0	\$0	\$2,000	
SP1810-18	\$0	\$0	\$0	\$0	\$0	\$0	\$0	\$0	\$0	\$1,742,400	\$0	\$0	\$0	\$435,600	\$0	\$0	\$2,178,000	
SP1811-18	\$0	\$72,000	\$0	\$0	\$0	\$0	\$0	\$0	\$0	\$0	\$0	\$0	\$0	\$8,000	\$0	\$0	\$80,000	
SP1812-18	\$0	\$72,000	\$0	\$0	\$0	\$0	\$0	\$0	\$0	\$0	\$0	\$0	\$0	\$8,000	\$0	\$0	\$80,000	
WI1001-17A2	\$0	\$0	\$0	\$4,000	\$0	\$0	\$0	\$0	\$0	\$0	\$0	\$0	\$0	\$1,000	\$0	\$0	\$5,000	
WI1701-17AM1	\$873,896	\$0	\$0	\$0	\$0	\$0	\$0	\$0	\$0	\$0	\$0	\$0	\$327,354	\$0	\$0	\$0	\$1,201,250	
WI1801-18	\$0	\$0	\$0	\$532,000	\$0	\$0	\$0	\$0	\$0	\$0	\$0	\$0	\$0	\$133,000	\$0	\$0	\$665,000	
SUBTOTAL	\$9,106,340	\$4,639,856	\$1,600	\$16,786,402	\$981,200	\$0	\$0	\$0	\$574,959	\$12,431,198	\$166,134	\$580,494	\$2,768,223	\$8,670,074	\$0	\$302,200	\$96,749	\$57,105,429
	\$0																	
2019																		
BA1801-18	\$0	\$0	\$0	\$0	\$0	\$0	\$0	\$0	\$0	\$8,000	\$0	\$0	\$0	\$2,000	\$0	\$0	\$10,000	
CC0901	\$0	\$0	\$0	\$1,600	\$0	\$0	\$0	\$0	\$0	\$0	\$0	\$0	\$0	\$400	\$0	\$0	\$2,000	
CC1102	\$0	\$0	\$0	\$0	\$0	\$0	\$0	\$0	\$0	\$400,000	\$0	\$0	\$0	\$100,000	\$0	\$0	\$500,000	
CC1601	\$0	\$900	\$0	\$0	\$0	\$0	\$0	\$0	\$0	\$0	\$0	\$0	\$0	\$100	\$0	\$0	\$1,000	
CC1703	\$0	\$0	\$0	\$4,000	\$0	\$0	\$0	\$0	\$0	\$0	\$0	\$0	\$0	\$1,000	\$0	\$0	\$5,000	
CC1801	\$0	\$0	\$0	\$1,240,800	\$0	\$0	\$0	\$0	\$0	\$0	\$0	\$0	\$0	\$310,200	\$0	\$0	\$1,551,000	
CC1802	\$0	\$0	\$0	\$0	\$0	\$0	\$0	\$0	\$0	\$80,000	\$0	\$0	\$0	\$20,000	\$0	\$0	\$100,000	
GR1403-18A1	\$0	\$0	\$0	\$0	\$0	\$0	\$0	\$0	\$0	\$8,000	\$0	\$0	\$0	\$2,000	\$0	\$0	\$10,000	
GR1701	\$0	\$0	\$0	\$7,634,400	\$0	\$0	\$0	\$0	\$0	\$0	\$0	\$0	\$0	\$1,908,600	\$0	\$0	\$9,543,000	
GR1703	\$0	\$0	\$0	\$3,200	\$0	\$0	\$0	\$0	\$0	\$0	\$0	\$0	\$0	\$800	\$0	\$0	\$4,000	
GR1704	\$0	\$0	\$0	\$38,400	\$0	\$0	\$0	\$0	\$0	\$0	\$0	\$0	\$0	\$9,600	\$0	\$0	\$48,000	
GR1705	\$0	\$76,000	\$0	\$225,600	\$0	\$0	\$0	\$0	\$0	\$0	\$0	\$0	\$0	\$75,400	\$0	\$0	\$377,000	
GR1707-17A6	\$0	\$0	\$0	\$0	\$0	\$0	\$0	\$0	\$0	\$0	\$0	\$0	\$1,000	\$0	\$0	\$1,000		
GR1801-18	\$0	\$22,500	\$0	\$0	\$0	\$0	\$0	\$0	\$0	\$0	\$0	\$0	\$0	\$2,500	\$0	\$0	\$25,000	
GR1804-18	\$0	\$0	\$0	\$0	\$0	\$0	\$0	\$0	\$0	\$43,200	\$0	\$0	\$0	\$10,800	\$0	\$0	\$54,000	
GR1805-18	\$0	\$0	\$0	\$800	\$0	\$0	\$0	\$0	\$0	\$0	\$0	\$0	\$0	\$200	\$0	\$0	\$1,000	
MO1105	\$0	\$0	\$0	\$0	\$0	\$0	\$0	\$0	\$0	\$0	\$0	\$0	\$0	\$284,000	\$0	\$0	\$284,000	
MO1705	\$0	\$0	\$0	\$1,600	\$0	\$0	\$0	\$0	\$0	\$0	\$0	\$0	\$0	\$400	\$0	\$0	\$2,000	
MO1709	\$0	\$162,900	\$0	\$0	\$0	\$0	\$0	\$0	\$0	\$0	\$0	\$0	\$0	\$18,100	\$0	\$0	\$181,000	
MO1711	\$0	\$0	\$0	\$511,200	\$0	\$0	\$0	\$0	\$0	\$0	\$0	\$0	\$0	\$127,800	\$0	\$0	\$639,000	
MO1712	\$0	\$0	\$0	\$0	\$0	\$0	\$0	\$0	\$0	\$1,600	\$0	\$0	\$0	\$400	\$0	\$0	\$2,000	
MO1714	\$0	\$0	\$0	\$0	\$0	\$0	\$0	\$0	\$0	\$1,600	\$0	\$0	\$0	\$400	\$0	\$0	\$2,000	
MO1717	\$324,000	\$0	\$0	\$471,200	\$0	\$0	\$0	\$0	\$0	\$0	\$0	\$0	\$81,000	\$117,800	\$0	\$0	\$994,000	
MO1719	\$0	\$0	\$0	\$0	\$0	\$0	\$0	\$0	\$0	\$38,400	\$0	\$0	\$0	\$9,600	\$0	\$0	\$48,000	
MO1720	\$0	\$0	\$0	\$0	\$0	\$0	\$0	\$0	\$0	\$4,000	\$0	\$0	\$0	\$1,000	\$0	\$0	\$5,000	
MO1721	\$0	\$27,000	\$0	\$0	\$0	\$0	\$0	\$0	\$0	\$0	\$0	\$0	\$0	\$3,000	\$0	\$0	\$30,000	
MO1722	\$0	\$0	\$0	\$0	\$0	\$0	\$0	\$0	\$0	\$16,800	\$0	\$0	\$0	\$4,200	\$0	\$0	\$21,000	
MO1723	\$0	\$0	\$0	\$4,000	\$0	\$0	\$0	\$0	\$0	\$0	\$0	\$0	\$0	\$1,000	\$0	\$0	\$5,000	
MO1803-18	\$0	\$900	\$0	\$0	\$0	\$0	\$0	\$0	\$0	\$0	\$0	\$0	\$0	\$100	\$0	\$0	\$1,000	
MO1804-18	\$0	\$0	\$0	\$800	\$0	\$0	\$0	\$0	\$0	\$0	\$0	\$0	\$0	\$200	\$0	\$0	\$1,000	
MO1805-18	\$0	\$0	\$0	\$1,364,000	\$0	\$0	\$0	\$0	\$0	\$0	\$0	\$0	\$0	\$341,000	\$0	\$0	\$1,705,000	

FY 2019 continued on next page

FINANCIAL SUMMARY

Roadways

YEARLY SUMMARY

PROJECT	Federal												Local		State			TOTAL
	FHWA (STBG-U)	FHWA (SAFETY)	FHWA (BRIDGE)	FHWA (STBG)	FHWA (UM)	FHWA (130)	FHWA (NHS)	FHWA (BRM)	FHWA (BRO)	FHWA (NHPP)	FHWA (HPP)	FEMA	LOCAL	MoDOT	MoDOT-GCSA	MoDOT-AC	SEMA	
2019 Continued																		
MO1806-18	\$0	\$0	\$0	\$80,000	\$0	\$0	\$0	\$0	\$0	\$0	\$0	\$0	\$0	\$20,000	\$0	\$0	\$0	\$100,000
NX1701	\$0	\$0	\$0	\$0	\$0	\$0	\$0	\$0	\$0	\$221,600	\$0	\$0	\$0	\$55,400	\$0	\$0	\$0	\$277,000
NX1702	\$0	\$0	\$0	\$5,335,200	\$0	\$0	\$0	\$0	\$0	\$256,800	\$0	\$0	\$0	\$1,398,000	\$0	\$0	\$0	\$6,990,000
NX1704	\$0	\$0	\$0	\$0	\$0	\$0	\$0	\$0	\$0	\$1,600	\$0	\$0	\$0	\$400	\$0	\$0	\$0	\$2,000
NX1705	\$0	\$0	\$0	\$0	\$0	\$0	\$0	\$0	\$0	\$4,148,800	\$0	\$0	\$0	\$1,037,200	\$0	\$0	\$0	\$5,186,000
NX1801-17A2	\$848,486	\$0	\$0	\$0	\$0	\$0	\$0	\$0	\$0	\$745,114	\$0	\$0	\$212,121	\$186,279	\$0	\$0	\$0	\$1,992,000
NX1802-18	\$290,928	\$0	\$0	\$0	\$0	\$0	\$0	\$0	\$0	\$0	\$0	\$0	\$72,732	\$0	\$0	\$0	\$0	\$363,660
OK1401-17A2	\$1,101,726	\$0	\$0	\$1,110,998	\$0	\$0	\$0	\$0	\$0	\$0	\$0	\$0	\$275,431	\$277,749	\$0	\$0	\$0	\$2,765,904
OK1701	\$0	\$835,000	\$0	\$3,897,800	\$0	\$0	\$0	\$0	\$0	\$0	\$0	\$0	\$0	\$1,183,200	\$0	\$0	\$0	\$5,916,000
OK1802-17A5	\$173,278	\$0	\$0	\$0	\$0	\$0	\$0	\$0	\$158,967	\$0	\$0	\$160,498	\$135,375	\$0	\$0	\$26,750	\$0	\$654,868
OK1803	\$0	\$0	\$0	\$0	\$0	\$0	\$0	\$0	\$0	\$114,400	\$0	\$0	\$0	\$28,600	\$0	\$0	\$0	\$143,000
RG0901-18A1	\$0	\$0	\$0	\$0	\$0	\$0	\$0	\$0	\$0	\$8,000	\$0	\$0	\$0	\$2,000	\$0	\$0	\$0	\$10,000
RG1201	\$0	\$0	\$0	\$0	\$0	\$0	\$0	\$0	\$0	\$800	\$0	\$0	\$0	\$200	\$0	\$0	\$0	\$1,000
RP1701	\$0	\$0	\$0	\$0	\$0	\$0	\$0	\$0	\$0	\$8,000	\$0	\$0	\$0	\$2,000	\$0	\$0	\$0	\$10,000
RP1703-17A3	\$0	\$0	\$0	\$1,600	\$0	\$0	\$0	\$0	\$0	\$0	\$0	\$0	\$0	\$400	\$0	\$0	\$0	\$2,000
RP1704-17A3	\$0	\$0	\$0	\$1,600	\$0	\$0	\$0	\$0	\$0	\$0	\$0	\$0	\$0	\$400	\$0	\$0	\$0	\$2,000
RP1802-18	\$0	\$0	\$0	\$0	\$0	\$0	\$0	\$0	\$0	\$28,000	\$0	\$0	\$0	\$7,000	\$0	\$0	\$0	\$35,000
RP1803-18	\$0	\$0	\$0	\$0	\$0	\$0	\$0	\$0	\$0	\$0	\$0	\$0	\$0	\$2,800	\$0	\$11,200	\$0	\$14,000
SP1401	\$0	\$0	\$0	\$0	\$0	\$0	\$0	\$0	\$0	\$1,600	\$0	\$0	\$0	\$400	\$0	\$0	\$0	\$2,000
SP1405-18A1	\$0	\$0	\$0	\$0	\$0	\$0	\$0	\$0	\$0	\$40,000	\$0	\$0	\$0	\$10,000	\$0	\$0	\$0	\$50,000
SP1419-18A1	\$0	\$0	\$0	\$0	\$40,000	\$0	\$0	\$0	\$0	\$0	\$0	\$0	\$0	\$10,000	\$0	\$0	\$0	\$50,000
SP1605-17AM1	\$0	\$0	\$0	\$0	\$0	\$0	\$0	\$963,132	\$0	\$0	\$0	\$0	\$240,783	\$0	\$0	\$0	\$0	\$1,203,915
SP1704	\$0	\$0	\$0	\$0	\$0	\$0	\$0	\$0	\$0	\$664,800	\$0	\$0	\$0	\$166,200	\$0	\$0	\$0	\$831,000
SP1705	\$0	\$0	\$0	\$0	\$0	\$0	\$0	\$0	\$0	\$7,771,200	\$0	\$0	\$0	\$1,942,800	\$0	\$0	\$0	\$9,714,000
SP1707	\$0	\$0	\$0	\$32,000	\$0	\$0	\$0	\$0	\$0	\$0	\$0	\$0	\$0	\$8,000	\$0	\$0	\$0	\$40,000
SP1708	\$0	\$0	\$0	\$0	\$0	\$0	\$0	\$0	\$0	\$8,000	\$0	\$0	\$0	\$2,000	\$0	\$0	\$0	\$10,000
SP1709	\$0	\$0	\$0	\$0	\$0	\$0	\$0	\$0	\$0	\$16,000	\$0	\$0	\$0	\$4,000	\$0	\$0	\$0	\$20,000
SP1710	\$0	\$0	\$0	\$0	\$0	\$0	\$0	\$0	\$0	\$14,400	\$0	\$0	\$0	\$3,600	\$0	\$0	\$0	\$18,000
SP1801-18	\$0	\$0	\$0	\$0	\$0	\$0	\$0	\$0	\$0	\$1,600	\$0	\$0	\$0	\$400	\$0	\$0	\$0	\$2,000
SP1802-18	\$0	\$0	\$0	\$0	\$0	\$0	\$0	\$0	\$0	\$1,600	\$0	\$0	\$0	\$400	\$0	\$0	\$0	\$2,000
SP1803-18	\$0	\$0	\$73,600	\$0	\$0	\$0	\$0	\$0	\$0	\$0	\$0	\$0	\$0	\$18,400	\$0	\$0	\$0	\$92,000
SP1805-18	\$0	\$0	\$0	\$0	\$14,400	\$0	\$0	\$0	\$0	\$0	\$0	\$0	\$0	\$1,600	\$0	\$0	\$0	\$16,000
SP1807-18	\$0	\$1,774,800	\$0	\$0	\$0	\$0	\$0	\$0	\$0	\$0	\$0	\$0	\$0	\$197,200	\$0	\$0	\$0	\$1,972,000
SP1809-18	\$0	\$0	\$0	\$0	\$0	\$0	\$0	\$0	\$0	\$29,600	\$0	\$0	\$0	\$7,400	\$0	\$0	\$0	\$37,000
SP1901-18	\$0	\$0	\$0	\$0	\$0	\$180,000	\$0	\$0	\$0	\$0	\$0	\$0	\$0	\$0	\$20,000	\$0	\$0	\$200,000
WH1001-17A2	\$0	\$0	\$0	\$4,000	\$0	\$0	\$0	\$0	\$0	\$0	\$0	\$0	\$0	\$1,000	\$0	\$0	\$0	\$5,000
WH1801-18	\$0	\$0	\$0	\$5,700,000	\$0	\$0	\$0	\$0	\$0	\$0	\$0	\$0	\$0	\$1,425,000	\$0	\$0	\$0	\$7,125,000
SUBTOTAL	\$2,738,418	\$2,900,000	\$73,600	\$27,664,798	\$54,400	\$180,000	\$0	\$963,132	\$158,967	\$14,683,514	\$0	\$160,498	\$1,018,442	\$11,352,628	\$20,000	\$11,200	\$26,750	\$62,006,347
2020																		
BA1801-18	\$0	\$0	\$0	\$0	\$0	\$0	\$0	\$0	\$0	\$660,800	\$0	\$0	\$0	\$165,200	\$0	\$0	\$0	\$826,000
CC1102	\$0	\$0	\$0	\$0	\$0	\$0	\$1,600	\$0	\$0	\$0	\$0	\$0	\$0	\$400	\$0	\$0	\$0	\$2,000
CC1601	\$0	\$55,800	\$0	\$0	\$0	\$0	\$0	\$0	\$0	\$0	\$0	\$0	\$0	\$6,200	\$0	\$0	\$0	\$62,000
CC1703	\$0	\$0	\$0	\$4,000	\$0	\$0	\$0	\$0	\$0	\$0	\$0	\$0	\$0	\$1,000	\$0	\$0	\$0	\$5,000
CC1802	\$0	\$0	\$0	\$0	\$0	\$0	\$0	\$0	\$0	\$313,600	\$0	\$0	\$0	\$78,400	\$0	\$0	\$0	\$392,000
GR1403-18A1	\$0	\$0	\$0	\$0	\$0	\$0	\$0	\$0	\$0	\$8,000	\$0	\$0	\$0	\$2,000	\$0	\$0	\$0	\$10,000
GR1502	\$1,120,000	\$0	\$0	\$0	\$0	\$0	\$0	\$0	\$0	\$0	\$0	\$0	\$280,000	\$0	\$0	\$0	\$0	\$1,400,000
GR1703	\$0	\$0	\$0	\$113,600	\$0	\$0	\$0	\$0	\$0	\$0	\$0	\$0	\$0	\$28,400	\$0	\$0	\$0	\$142,000
GR1704	\$0	\$242,000	\$0	\$417,200	\$0	\$0	\$0	\$0	\$0	\$0	\$0	\$0	\$0	\$164,800	\$0	\$0	\$0	\$824,000
GR1707-17A6	\$0	\$0	\$0	\$0	\$0	\$0	\$0	\$0	\$0	\$0	\$0	\$0	\$1,000	\$0	\$0	\$0	\$0	\$1,000
GR1801-18	\$0	\$22,500	\$0	\$0	\$0	\$0	\$0	\$0	\$0	\$0	\$0	\$0	\$0	\$2,500	\$0	\$0	\$0	\$25,000
GR1804-18	\$0	\$0	\$0	\$0	\$0	\$0	\$0	\$0	\$0	\$2,745,600	\$0	\$0	\$0	\$686,400	\$0	\$0	\$0	\$3,432,000
GR1805-18	\$0	\$0	\$0	\$43,200	\$0	\$0	\$0	\$0	\$0	\$0	\$0	\$0	\$0	\$10,800	\$0	\$0	\$0	\$54,000
MO1105	\$0	\$0	\$0	\$0	\$0	\$0	\$0	\$0	\$0	\$0	\$0	\$0	\$0	\$284,000	\$0	\$0	\$0	\$284,000
MO1705	\$0	\$0	\$0	\$788,000	\$0	\$0	\$0	\$0	\$0	\$0	\$0	\$0	\$0	\$197,000	\$0	\$0	\$0	\$985,000
MO1710-17A2	\$0	\$0	\$0	\$1,664,000	\$0	\$0	\$0	\$0	\$0	\$0	\$0	\$0	\$0	\$416,000	\$0	\$0	\$0	\$2,080,000
MO1711	\$0	\$0	\$0	\$4,349,600	\$0	\$0	\$0	\$0	\$0	\$0	\$0	\$0	\$0	\$1,087,400	\$0	\$0	\$0	\$5,437,000
MO1712	\$0	\$0	\$0	\$0	\$0	\$0	\$0	\$0	\$0	\$1,600	\$0	\$0	\$0	\$400	\$0	\$0	\$0	\$2,000
MO1714	\$0	\$0	\$0	\$0	\$0	\$0	\$0	\$0	\$0	\$33,600	\$0	\$0	\$0	\$8,400	\$0	\$0	\$0	\$42,000
MO1719	\$0	\$0	\$0	\$0	\$0	\$0	\$0	\$0	\$0	\$38,400	\$0	\$0	\$0	\$9,600	\$0	\$0	\$0	\$48,000
MO1720	\$0	\$0	\$0	\$0	\$0	\$0	\$0	\$0	\$0	\$4,000	\$0	\$0	\$0	\$1,000	\$0	\$0	\$0	\$5,000
MO1721	\$0	\$27,000	\$0	\$0	\$0	\$0	\$0	\$0	\$0	\$0	\$0	\$0	\$0	\$3,000	\$0	\$0	\$0	\$30,000
MO1722	\$0	\$0	\$0	\$0	\$0	\$0	\$0	\$0	\$0	\$18,400	\$0	\$0	\$0	\$4,600	\$0	\$0	\$0	\$23,000
MO1723	\$0	\$0	\$0	\$3,200	\$0	\$0	\$0	\$0	\$0	\$0	\$0	\$0	\$0	\$800	\$0	\$0	\$0	\$4,000
MO1803-18	\$0	\$161,100	\$0	\$0	\$0	\$0	\$0	\$0	\$0	\$0	\$0	\$0	\$0	\$17,900	\$0	\$0	\$0	\$179,000
MO1804-18	\$332,000	\$0	\$0	\$471,200	\$0	\$0	\$0	\$0	\$0	\$0	\$0	\$0	\$83,000	\$117,800	\$0	\$0	\$0	\$1,004,000
MO1806-18	\$0	\$0	\$0	\$1,440,800	\$0	\$0	\$0	\$0	\$0	\$0	\$0	\$0	\$0	\$360,200	\$0	\$0	\$0	\$1,801,000

FY 2020 continued on next page

FINANCIAL SUMMARY

Roadways

YEARLY SUMMARY

PROJECT	Federal											Local	State				TOTAL	
	FHWA (STBG-U)	FHWA (SAFETY)	FHWA (BRIDGE)	FHWA (STBG)	FHWA (UM)	FHWA (130)	FHWA (NHS)	FHWA (BRM)	FHWA (BRO)	FHWA (NHPP)	FHWA (HPP)	FEMA	LOCAL	MoDOT	MoDOT-GCSA	MoDOT-AC		SEMA
2020 Continued																		
MO2001-18	\$0	\$855,900	\$0	\$0	\$0	\$0	\$0	\$0	\$0	\$0	\$0	\$0	\$0	\$0	\$0	\$0	\$0	\$855,900
MO2002-18	\$0	\$1,013,400	\$0	\$0	\$0	\$0	\$0	\$0	\$0	\$0	\$0	\$0	\$0	\$112,600	\$0	\$0	\$0	\$1,126,000
NX1701	\$0	\$0	\$0	\$0	\$0	\$0	\$0	\$0	\$0	\$6,378,400	\$0	\$0	\$0	\$1,594,600	\$0	\$0	\$0	\$7,973,000
NX1704	\$0	\$0	\$0	\$0	\$0	\$0	\$0	\$0	\$0	\$1,600	\$0	\$0	\$0	\$400	\$0	\$0	\$0	\$2,000
OK1803	\$0	\$0	\$0	\$0	\$0	\$0	\$0	\$0	\$0	\$164,000	\$0	\$0	\$0	\$41,000	\$0	\$0	\$0	\$205,000
RG0901-18A1	\$0	\$0	\$0	\$0	\$0	\$0	\$0	\$0	\$0	\$8,000	\$0	\$0	\$0	\$2,000	\$0	\$0	\$0	\$10,000
RG1201	\$0	\$0	\$0	\$0	\$0	\$0	\$0	\$0	\$0	\$800	\$0	\$0	\$0	\$200	\$0	\$0	\$0	\$1,000
RP1701	\$0	\$0	\$0	\$0	\$0	\$0	\$0	\$0	\$0	\$8,000	\$0	\$0	\$0	\$2,000	\$0	\$0	\$0	\$10,000
RP1703-17A3	\$0	\$0	\$0	\$1,600	\$0	\$0	\$0	\$0	\$0	\$0	\$0	\$0	\$0	\$400	\$0	\$0	\$0	\$2,000
RP1704-17A3	\$0	\$0	\$0	\$1,600	\$0	\$0	\$0	\$0	\$0	\$0	\$0	\$0	\$0	\$400	\$0	\$0	\$0	\$2,000
RP1802-18	\$0	\$0	\$0	\$0	\$0	\$0	\$0	\$0	\$0	\$1,852,800	\$0	\$0	\$0	\$463,200	\$0	\$0	\$0	\$2,316,000
RP1803-18	\$0	\$0	\$0	\$0	\$0	\$0	\$0	\$0	\$0	\$0	\$0	\$0	\$0	\$210,400	\$0	\$841,600	\$0	\$1,052,000
SP1401	\$0	\$0	\$0	\$0	\$0	\$0	\$0	\$0	\$0	\$5,600	\$0	\$0	\$0	\$1,400	\$0	\$0	\$0	\$7,000
SP1405-18A1	\$0	\$0	\$0	\$0	\$0	\$0	\$0	\$0	\$0	\$40,000	\$0	\$0	\$0	\$10,000	\$0	\$0	\$0	\$50,000
SP1419-18A1	\$0	\$0	\$0	\$0	\$9,000	\$0	\$0	\$0	\$0	\$0	\$0	\$0	\$0	\$1,000	\$0	\$0	\$0	\$10,000
SP1707	\$0	\$300,000	\$0	\$292,000	\$0	\$0	\$0	\$0	\$0	\$0	\$0	\$0	\$0	\$148,000	\$0	\$0	\$0	\$740,000
SP1708	\$0	\$0	\$0	\$0	\$0	\$0	\$0	\$0	\$0	\$896,800	\$0	\$0	\$0	\$224,200	\$0	\$0	\$0	\$1,121,000
SP1709	\$0	\$0	\$0	\$0	\$0	\$0	\$0	\$0	\$0	\$16,000	\$0	\$0	\$0	\$4,000	\$0	\$0	\$0	\$20,000
SP1710	\$0	\$0	\$0	\$0	\$0	\$0	\$0	\$0	\$0	\$664,000	\$0	\$0	\$0	\$166,000	\$0	\$0	\$0	\$830,000
SP1801-18	\$0	\$0	\$0	\$0	\$0	\$0	\$0	\$0	\$0	\$1,600	\$0	\$0	\$0	\$400	\$0	\$0	\$0	\$2,000
SP1802-18	\$0	\$0	\$0	\$0	\$0	\$0	\$0	\$0	\$0	\$1,600	\$0	\$0	\$0	\$400	\$0	\$0	\$0	\$2,000
SP1803-18	\$0	\$0	\$785,600	\$0	\$0	\$0	\$0	\$0	\$0	\$0	\$0	\$0	\$0	\$196,400	\$0	\$0	\$0	\$982,000
SP1805-18	\$0	\$0	\$0	\$0	\$1,511,100	\$0	\$0	\$0	\$0	\$0	\$0	\$0	\$0	\$167,900	\$0	\$0	\$0	\$1,679,000
SP1809-18	\$0	\$0	\$0	\$0	\$0	\$0	\$0	\$0	\$0	\$1,960,000	\$0	\$0	\$0	\$490,000	\$0	\$0	\$0	\$2,450,000
WI1001-17A2	\$0	\$0	\$0	\$4,000	\$0	\$0	\$0	\$0	\$0	\$0	\$0	\$0	\$0	\$1,000	\$0	\$0	\$0	\$5,000
SUBTOTAL	\$1,452,000	\$2,677,700	\$785,600	\$9,594,000	\$1,520,100	\$0	\$1,600	\$0	\$0	\$15,823,200	\$0	\$0	\$364,000	\$7,492,100	\$0	\$841,600	\$0	\$40,551,900
2021																		
CC1703	\$0	\$0	\$0	\$4,000	\$0	\$0	\$0	\$0	\$0	\$0	\$0	\$0	\$0	\$1,000	\$0	\$0	\$0	\$5,000
CC1802	\$0	\$0	\$0	\$0	\$0	\$0	\$0	\$0	\$0	\$3,593,600	\$0	\$0	\$0	\$898,400	\$0	\$0	\$0	\$4,492,000
GR1403-18A1	\$0	\$0	\$0	\$0	\$0	\$0	\$0	\$0	\$0	\$8,000	\$0	\$0	\$0	\$2,000	\$0	\$0	\$0	\$10,000
MO1105	\$0	\$0	\$0	\$0	\$0	\$0	\$0	\$0	\$0	\$0	\$0	\$0	\$0	\$284,000	\$0	\$0	\$0	\$284,000
MO1712	\$0	\$0	\$0	\$56,000	\$0	\$0	\$0	\$0	\$0	\$0	\$0	\$0	\$0	\$14,000	\$0	\$0	\$0	\$70,000
MO1714	\$0	\$0	\$0	\$216,800	\$0	\$0	\$0	\$0	\$0	\$4,458,400	\$0	\$0	\$0	\$1,168,800	\$0	\$0	\$0	\$5,844,000
MO1719	\$0	\$0	\$0	\$0	\$0	\$0	\$0	\$0	\$0	\$38,400	\$0	\$0	\$0	\$9,600	\$0	\$0	\$0	\$48,000
MO1720	\$0	\$0	\$0	\$0	\$0	\$0	\$0	\$0	\$0	\$3,200	\$0	\$0	\$0	\$800	\$0	\$0	\$0	\$4,000
MO1721	\$0	\$26,100	\$0	\$0	\$0	\$0	\$0	\$0	\$0	\$0	\$0	\$0	\$0	\$2,900	\$0	\$0	\$0	\$29,000
MO1722	\$0	\$0	\$0	\$0	\$0	\$0	\$0	\$0	\$0	\$16,800	\$0	\$0	\$0	\$4,200	\$0	\$0	\$0	\$21,000
MO1723	\$0	\$0	\$0	\$3,200	\$0	\$0	\$0	\$0	\$0	\$0	\$0	\$0	\$0	\$800	\$0	\$0	\$0	\$4,000
MO2001-18	\$0	\$54,900	\$0	\$0	\$0	\$0	\$0	\$0	\$0	\$0	\$0	\$0	\$95,100	\$6,100	\$0	\$0	\$0	\$156,100
MO2101-18	\$340,000	\$0	\$0	\$0	\$0	\$0	\$0	\$0	\$0	\$0	\$0	\$0	\$85,000	\$0	\$0	\$0	\$0	\$425,000
OK1803	\$0	\$0	\$0	\$0	\$0	\$0	\$0	\$0	\$0	\$2,492,000	\$0	\$0	\$0	\$623,000	\$0	\$0	\$0	\$3,115,000
RG0901-18A1	\$0	\$0	\$0	\$0	\$0	\$0	\$0	\$0	\$0	\$8,000	\$0	\$0	\$0	\$2,000	\$0	\$0	\$0	\$10,000
RG1201	\$0	\$0	\$0	\$0	\$0	\$0	\$4,800	\$0	\$0	\$0	\$0	\$0	\$0	\$1,200	\$0	\$0	\$0	\$6,000
RP1701	\$0	\$0	\$0	\$0	\$0	\$0	\$0	\$0	\$0	\$8,000	\$0	\$0	\$0	\$2,000	\$0	\$0	\$0	\$10,000
RP1703-17A3	\$0	\$0	\$0	\$1,600	\$0	\$0	\$0	\$0	\$0	\$0	\$0	\$0	\$0	\$400	\$0	\$0	\$0	\$2,000
RP1704-17A3	\$0	\$0	\$0	\$1,600	\$0	\$0	\$0	\$0	\$0	\$0	\$0	\$0	\$0	\$400	\$0	\$0	\$0	\$2,000
SP1401	\$0	\$0	\$0	\$0	\$0	\$0	\$0	\$0	\$0	\$440,000	\$0	\$0	\$0	\$110,000	\$0	\$0	\$0	\$550,000
SP1419-18A1	\$0	\$0	\$0	\$0	\$9,000	\$0	\$0	\$0	\$0	\$0	\$0	\$0	\$0	\$1,000	\$0	\$0	\$0	\$10,000
SP1709	\$0	\$0	\$0	\$0	\$0	\$0	\$0	\$0	\$0	\$16,000	\$0	\$0	\$0	\$4,000	\$0	\$0	\$0	\$20,000
WI1001-17A2	\$0	\$0	\$0	\$4,000	\$0	\$0	\$0	\$0	\$0	\$0	\$0	\$0	\$0	\$1,000	\$0	\$0	\$0	\$5,000
SUBTOTAL	\$340,000	\$81,000	\$0	\$287,200	\$9,000	\$0	\$4,800	\$0	\$0	\$11,082,400	\$0	\$0	\$180,100	\$3,137,600	\$0	\$0	\$0	\$15,122,100
GRAND TOTAL	\$13,636,758	\$10,298,556	\$860,800	\$54,332,400	\$2,564,700	\$180,000	\$6,400	\$963,132	\$733,926	\$54,020,312	\$166,134	\$740,992	\$4,330,765	\$30,652,402	\$20,000	\$1,155,000	\$123,499	\$174,785,776

FINANCIAL CONSTRAINT

Roadways

	Federal Funding Source												TOTAL Federal Funds	Local	MoDOT Programmed Funds	Other	State Operations and Maintenance	TOTAL
	STBG-U	Safety	Bridge	STBG	I/M	130	NHS	BRM	BRO	NHPP	HPP	FEMA						
2018 Funds Programmed	\$9,106,340	\$4,639,856	\$1,600	\$16,786,402	\$981,200	\$0	\$0	\$0	\$574,959	\$12,431,198	\$166,134	\$580,494	\$45,268,183	\$2,768,223	\$8,972,274	\$96,749	\$4,779,389	\$61,884,818
2019 Funds Programmed	\$2,738,418	\$2,900,000	\$73,600	\$27,664,798	\$54,400	\$180,000	\$0	\$963,132	\$158,967	\$14,683,514	\$0	\$160,498	\$49,577,327	\$1,018,442	\$11,383,828	\$26,750	\$4,851,080	\$66,857,427
2020 Funds Programmed	\$1,452,000	\$2,677,700	\$785,600	\$9,594,000	\$1,520,100	\$0	\$1,600	\$0	\$0	\$15,823,200	\$0	\$0	\$31,854,200	\$364,000	\$8,333,700	\$0	\$4,923,846	\$45,475,746
2021 Funds Programmed	\$340,000	\$81,000	\$0	\$287,200	\$9,000	\$0	\$4,800	\$0	\$0	\$11,082,400	\$0	\$0	\$11,804,400	\$180,100	\$3,137,600	\$0	\$4,997,704	\$20,119,804
Total	\$13,636,758	\$10,298,556	\$860,800	\$54,332,400	\$2,564,700	\$180,000	\$6,400	\$963,132	\$733,926	\$54,020,312	\$166,134	\$740,992	\$138,504,110	\$4,330,765	\$31,827,402	\$123,499	\$19,552,019	\$194,337,795

	Prior Year	FY 2018	FY 2019	FY 2020	FY 2021	TOTAL
Available State and Federal Funding	\$0	\$42,451,800	\$54,879,300	\$49,650,800	\$44,779,200	\$191,560,900
Available Operations and Maintenance Funding	\$0	\$4,779,389	\$4,851,080	\$4,923,846	\$4,997,704	\$19,552,019
Funds from Other Sources	\$864,492	\$0	\$0	\$0	\$0	\$864,492
Available Suballocated Funding	\$18,576,393	\$5,968,827	\$6,088,203	\$6,209,967	\$6,088,203	\$42,931,594
TOTAL AVAILABLE FUNDING	\$19,440,885	\$53,199,816	\$65,618,583	\$60,784,613	\$55,865,107	\$254,909,005
Prior Year Funding	\$19,440,885	\$10,755,883	\$9,517,039	\$24,825,906		
Programmed State and Federal Funding		(\$61,884,818)	(\$66,857,427)	(\$45,475,746)	(\$20,119,804)	(\$194,337,795)
TOTAL REMAINING	\$19,440,885	\$10,755,883	\$9,517,039	\$24,825,906	\$60,571,210	\$60,571,210

Additional Funds from Other Sources include one-time FEMA and SEMA grant funding for the Riverside Bridge Replacement.

Available State and Federal Funding shown here does not include funding Available shown on Bike/Ped Financial Constraint Page.