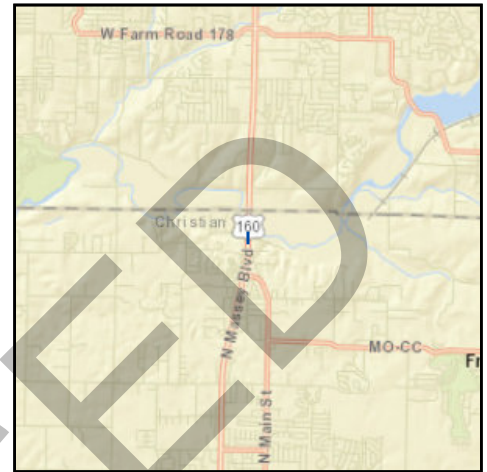




**E) Roadways Section**

**TIP # CC1601** SCOPING FOR ROUTE 160 SAFETY IMPROVEMENTS

**Route** Route 160  
**From** Route AA  
**To** 0.15 mile south of Route AA  
**Location/Agency** Christian County  
**Federal Agency** FHWA  
**Responsible Agency** MoDOT  
**Federal Funding Category** Safety  
**MoDOT Funding Category** Safety  
**AC Year of Conv.**  
**STIP #** 8S3064



**Project Description**

Scoping for high friction surface treatment on the westbound lanes south of Route AA.

Fund Code	Source	Phase	FY2015	FY2016	FY2017	FY2018	Total
FHWA	Federal	ENG	\$0	\$1,800	\$900	\$0	\$2,700
MoDOT	State	ENG	\$0	\$200	\$100	\$0	\$300
<b>Totals</b>			<b>\$0</b>	<b>\$2,000</b>	<b>\$1,000</b>	<b>\$0</b>	<b>\$3,000</b>

**Notes**

<b>Prior Cost</b>	\$0
<b>Future Cost</b>	\$0
<b>Total Cost</b>	\$3,000



**E) Roadways Section**

**TIP # GR1603** SCOPING FOR KANSAS EXPRESSWAY SAFETY IMPROVEMENTS

**Route** MO 13

**From**

**To**

**Location/Agency** City of Springfield

**Federal Agency** FHWA

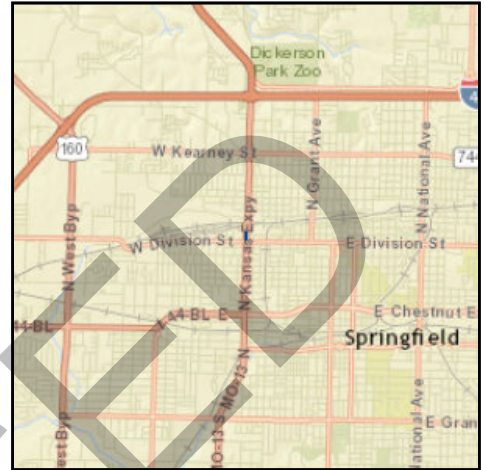
**Responsible Agency** MoDOT

**Federal Funding Category** Safety

**MoDOT Funding Category** Safety

**AC Year of Conv.**

**STIP #** 8S3063



**Project Description**

Scoping for high friction surface treatment on the southbound lanes of Kansas Expressway (MO 13) north of Division Street.

Fund Code	Source	Phase	FY2015	FY2016	FY2017	FY2018	Total
FHWA	Federal	ENG	\$0	\$1,800	\$900	\$0	\$2,700
MoDOT	State	ENG	\$0	\$200	\$100	\$0	\$300
<b>Totals</b>			<b>\$0</b>	<b>\$2,000</b>	<b>\$1,000</b>	<b>\$0</b>	<b>\$3,000</b>

**Notes**

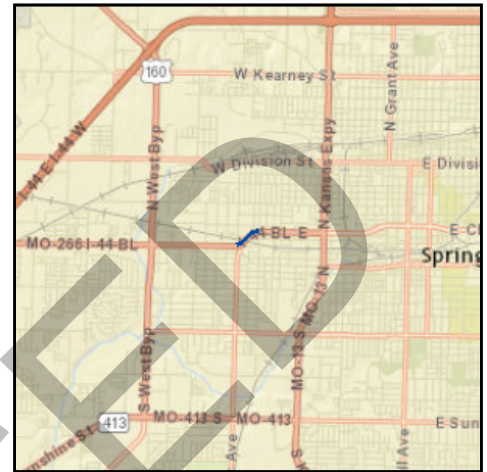
<b>Prior Cost</b>	\$0
<b>Future Cost</b>	\$0
<b>Total Cost</b>	\$3,000



**E) Roadways Section**

**TIP # SP1604** SCOPING FOR CHESTNUT EXPRESSWAY SAFETY IMPROVEMENTS

**Route** LP 44  
**From** 0.18 mile east of College Rd.  
**To** West Ave.  
**Location/Agency** City of Springfield  
**Federal Agency** FHWA  
**Responsible Agency** MoDOT  
**Federal Funding Category** Safety  
**MoDOT Funding Category** Safety  
**AC Year of Conv.**  
**STIP #** 8S3062



**Project Description**

Scoping for high friction surface treatment on the westbound lanes of Chestnut Expressway (LP 44) east of College Road.

Fund Code	Source	Phase	FY2015	FY2016	FY2017	FY2018	Total
FHWA	Federal	ENG	\$0	\$1,800	\$900	\$0	\$2,700
MoDOT	State	ENG	\$0	\$200	\$100	\$0	\$300
<b>Totals</b>			<b>\$0</b>	<b>\$2,000</b>	<b>\$1,000</b>	<b>\$0</b>	<b>\$3,000</b>

PROPOSED

**Notes**

<b>Prior Cost</b>	\$0
<b>Future Cost</b>	\$0
<b>Total Cost</b>	\$3,000



**E) Roadways Section**

**TIP #** SP1605      **MT. VERNON STREET BRIDGE OVER JORDAN CREEK**

**Route**            Mount Vernon

**From**

**To**

**Location/Agency**            City of Springfield

**Federal Agency**                FHWA

**Responsible Agency**        City of Springfield

**Federal Funding Category** BRM

**MoDOT Funding Category** N/A

**AC Year of Conv.**

**STIP #**



**Project Description**

Replacement of the Mount Vernon Street Bridge over Jordan Creek.

Fund Code	Source	Phase	FY2015	FY2016	FY2017	FY2018	Total
FHWA (BRM)	Federal	CON	\$0	\$731,651	\$0	\$0	\$731,651
LOCAL	Local	CON	\$0	\$468,349	\$0	\$0	\$468,349
<b>Totals</b>			<b>\$0</b>	<b>\$1,200,000</b>	<b>\$0</b>	<b>\$0</b>	<b>\$1,200,000</b>

**Notes**

Source of Local Funding: Local transportation revenues.

<b>Prior Cost</b>	\$0
<b>Future Cost</b>	\$0
<b>Total Cost</b>	\$1,200,000



**E) Roadways Section**

**TIP # GR1309** CAMPBELL AND PLAINVIEW INTERSECTION PHASE 1

**Route** Campbell and Plainview

**From** Campbell

**To** Plainview

**Location/Agency** City of Springfield

**Federal Agency** FHWA

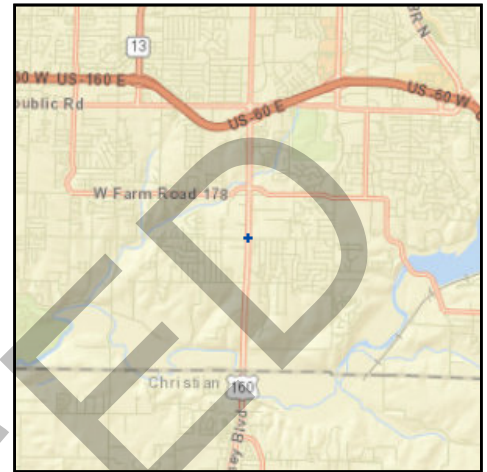
**Responsible Agency** MoDOT

**Federal Funding Category** NHPP(NHS), STP

**MoDOT Funding Category** Major Projects and Emerging Needs

**AC Year of Conv.** FY 2014

**STIP #** 8S0690



**Project Description**

Phase I intersection improvements at Campbell Avenue (Route 160) and Plainview Road, including design for Phase I and scoping for Phases II and III. Amended to include the US 160 outer road (Market) to the west from Bryant Street, approximately 525 feet south towards Plainview Road.

Fund Code	Source	Phase	FY2015	FY2016	FY2017	FY2018	Total
FHWA (STP-U)	Federal	CON	\$0	\$290,848	\$0	\$0	\$290,848
LOCAL	Local	CON	\$0	\$72,712	\$0	\$0	\$72,712
<b>Totals</b>			<b>\$0</b>	<b>\$363,560</b>	<b>\$0</b>	<b>\$0</b>	<b>\$363,560</b>

**Notes**

Source of MoDOT Funds: State transportation revenues. Previously programmed funds of \$108,000. Source Local Funds: Springfield 1/8-cent Transportation Sales Tax.

<b>Prior Cost</b>	\$832,980
<b>Future Cost</b>	\$0
<b>Total Cost</b>	\$1,196,540

**FINANCIAL SUMMARY**

**Roadways**

**YEARLY SUMMARY**

PROJECT	Federal									Local	State			Other	TOTAL
	FHWA (STP-U)	FHWA (SAFETY)	FHWA (BRIDGE)	FHWA (STP)	FHWA (130)	FHWA (NHPP)	FHWA (HPP)	FHWA (BRM)	FHWA (BRO)	LOCAL	MoDOT	MoDOT GCSA	MoDOT-AC	OTHER	
<b>FY 2015</b>															
BA1101	\$8,000	\$0	\$0	\$0	\$0	\$0	\$0	\$0	\$0	\$2,000	\$0	\$0	\$0	\$0	\$10,000
CC0901	\$0	\$0	\$0	\$0	\$0	\$0	\$0	\$0	\$0	\$0	\$400	\$0	\$1,600	\$0	\$2,000
CC1102	\$0	\$0	\$0	\$0	\$0	\$0	\$0	\$0	\$0	\$0	\$400	\$0	\$1,600	\$0	\$2,000
CC1110	\$2,072,000	\$0	\$0	\$0	\$0	\$0	\$0	\$0	\$0	\$1,557,044	\$97,600	\$0	\$3,893,356	\$0	\$7,620,000
GR1010	\$0	\$911,000	\$0	\$0	\$0	\$0	\$0	\$0	\$0	\$0	\$2,369,000	\$0	\$9,071,000	\$0	\$12,351,000
GR1104	\$0	\$0	\$0	\$0	\$160,000	\$0	\$0	\$0	\$0	\$0	\$0	\$40,000	\$0	\$0	\$200,000
GR1213	\$0	\$0	\$0	\$0	\$0	\$0	\$0	\$0	\$1,133,600	\$283,400	\$0	\$0	\$0	\$0	\$1,417,000
GR1312	\$0	\$0	\$0	\$0	\$0	\$0	\$0	\$0	\$371,200	\$92,800	\$0	\$0	\$0	\$0	\$464,000
GR1402	\$0	\$0	\$0	\$168,800	\$1,049,967	\$0	\$0	\$0	\$0	\$0	\$105,200	\$1,048,968	\$0	\$126,065	\$2,499,000
GR1403	\$0	\$0	\$0	\$0	\$0	\$0	\$0	\$0	\$0	\$0	\$400	\$0	\$1,600	\$0	\$2,000
GR1408	\$0	\$0	\$0	\$0	\$0	\$0	\$0	\$0	\$0	\$0	\$400	\$0	\$1,600	\$0	\$2,000
GR1501	\$1,200,000	\$0	\$0	\$0	\$0	\$0	\$0	\$0	\$0	\$300,000	\$0	\$0	\$0	\$0	\$1,500,000
GR1502	\$960,000	\$0	\$0	\$0	\$0	\$0	\$0	\$0	\$0	\$240,000	\$0	\$0	\$0	\$0	\$1,200,000
MO1105	\$0	\$0	\$0	\$0	\$0	\$0	\$0	\$0	\$0	\$0	\$284,000	\$0	\$0	\$0	\$284,000
MO1201	\$0	\$1,800	\$0	\$0	\$0	\$0	\$0	\$0	\$0	\$0	\$200	\$0	\$0	\$0	\$2,000
MO1404	\$0	\$0	\$0	\$0	\$0	\$0	\$0	\$0	\$0	\$0	\$400	\$0	\$1,600	\$0	\$2,000
MO1405	\$0	\$0	\$0	\$0	\$0	\$0	\$0	\$0	\$0	\$0	\$25,000	\$0	\$0	\$0	\$25,000
MO1408	\$0	\$0	\$0	\$0	\$0	\$0	\$0	\$0	\$0	\$0	\$196,000	\$0	\$784,000	\$0	\$980,000
MO1409	\$0	\$0	\$0	\$0	\$0	\$0	\$0	\$0	\$0	\$0	\$330,800	\$0	\$1,323,200	\$0	\$1,654,000
MO1501	\$0	\$32,000	\$0	\$0	\$0	\$0	\$0	\$0	\$0	\$0	\$0	\$0	\$0	\$0	\$32,000
MO1503	\$276,000	\$0	\$0	\$0	\$0	\$0	\$0	\$0	\$0	\$69,000	\$134,600	\$0	\$538,400	\$0	\$1,018,000
MO1504	\$0	\$0	\$0	\$0	\$0	\$0	\$0	\$0	\$0	\$0	\$21,600	\$0	\$194,400	\$0	\$216,000
MO1505	\$0	\$0	\$0	\$0	\$0	\$0	\$0	\$0	\$0	\$0	\$1,000	\$0	\$0	\$0	\$1,000
MO1601	\$0	\$0	\$0	\$0	\$0	\$0	\$0	\$0	\$0	\$0	\$2,000	\$0	\$0	\$0	\$2,000
MO1604	\$0	\$55,800	\$0	\$0	\$0	\$0	\$0	\$0	\$0	\$0	\$6,200	\$0	\$0	\$0	\$62,000
MO1605	\$0	\$0	\$0	\$0	\$0	\$0	\$0	\$0	\$0	\$0	\$400	\$0	\$1,600	\$0	\$2,000
MO1705	\$0	\$0	\$0	\$0	\$0	\$0	\$0	\$0	\$0	\$0	\$400	\$0	\$1,600	\$0	\$2,000
NX0601	\$0	\$0	\$0	\$0	\$0	\$0	\$0	\$0	\$0	\$0	\$0	\$0	\$0	\$0	\$0
NX0906	\$0	\$0	\$0	\$0	\$0	\$0	\$0	\$0	\$0	\$0	\$10,800	\$0	\$43,200	\$0	\$54,000
OK1401	\$0	\$0	\$0	\$0	\$0	\$0	\$0	\$0	\$0	\$0	\$400	\$0	\$1,600	\$0	\$2,000
RG0901	\$0	\$0	\$0	\$0	\$0	\$0	\$0	\$0	\$0	\$0	\$400	\$0	\$1,600	\$0	\$2,000
RG1201	\$0	\$0	\$0	\$0	\$0	\$0	\$0	\$0	\$0	\$0	\$400	\$0	\$1,600	\$0	\$2,000
RP1401	\$0	\$0	\$0	\$0	\$0	\$0	\$0	\$0	\$0	\$0	\$400	\$0	\$1,600	\$0	\$2,000
RP1504	\$40,000	\$0	\$0	\$0	\$0	\$0	\$0	\$0	\$0	\$10,000	\$0	\$0	\$0	\$0	\$50,000
RP1502	\$0	\$0	\$0	\$0	\$0	\$0	\$0	\$0	\$0	\$0	\$0	\$0	\$0	\$0	\$0
SP1018	\$0	\$0	\$248,000	\$0	\$0	\$0	\$0	\$0	\$0	\$0	\$62,000	\$0	\$0	\$0	\$310,000
SP1106	\$0	\$0	\$0	\$0	\$0	\$0	\$0	\$0	\$0	\$0	\$400	\$0	\$1,600	\$0	\$2,000
SP1109	\$0	\$0	\$0	\$0	\$0	\$2,763,298	\$0	\$0	\$0	\$0	\$0	\$0	\$0	\$0	\$2,763,298
SP1112	\$0	\$0	\$0	\$0	\$0	\$0	\$0	\$0	\$0	\$0	\$400	\$0	\$1,600	\$0	\$2,000
SP1114	\$0	\$0	\$0	\$0	\$160,000	\$0	\$0	\$0	\$0	\$0	\$0	\$40,000	\$0	\$0	\$200,000
SP1120	\$0	\$0	\$0	\$0	\$4,000	\$0	\$0	\$0	\$0	\$0	\$0	\$1,000	\$0	\$0	\$5,000
SP1204	\$0	\$0	\$0	\$0	\$0	\$0	\$0	\$0	\$0	\$0	\$400	\$0	\$1,600	\$0	\$2,000
SP1209	\$0	\$0	\$0	\$487,297	\$0	\$0	\$0	\$0	\$0	\$121,824	\$0	\$0	\$0	\$0	\$609,121
SP1315	\$0	\$0	\$0	\$0	\$0	\$0	\$0	\$0	\$0	\$0	\$88,200	\$0	\$352,800	\$0	\$441,000

FY 2015 continued on next page

**FINANCIAL SUMMARY**

**Roadways**

**YEARLY SUMMARY**

PROJECT	Federal									Local	State			Other	TOTAL
	FHWA (STP-U)	FHWA (SAFETY)	FHWA (BRIDGE)	FHWA (STP)	FHWA (130)	FHWA (NHPP)	FHWA (HPP)	FHWA (BRM)	FHWA (BRO)	LOCAL	MoDOT	MoDOT GCSA	MoDOT-AC	OTHER	
<b>FY 2015 continued</b>															
SP1316	\$0	\$0	\$0	\$0	\$0	\$0	\$0	\$0	\$0	\$0	\$391,800	\$0	\$1,567,200	\$0	\$1,959,000
SP1318	\$0	\$0	\$0	\$0	\$0	\$0	\$0	\$0	\$0	\$0	\$233,000	\$0	\$932,000	\$0	\$1,165,000
SP1321	\$10,000	\$0	\$0	\$0	\$0	\$0	\$0	\$0	\$0	\$3,984	\$0	\$0	\$0	\$0	\$13,984
SP1323	\$47,000	\$0	\$0	\$0	\$0	\$0	\$0	\$0	\$0	\$10,000	\$31,800	\$0	\$127,200	\$0	\$216,000
SP1401	\$0	\$0	\$0	\$0	\$0	\$0	\$0	\$0	\$0	\$0	\$1,000	\$0	\$4,000	\$0	\$5,000
SP1403	\$0	\$0	\$0	\$480,800	\$0	\$0	\$0	\$0	\$0	\$0	\$120,400	\$0	\$800	\$0	\$602,000
SP1405	\$0	\$0	\$0	\$0	\$0	\$0	\$0	\$0	\$0	\$0	\$400	\$0	\$1,600	\$0	\$2,000
SP1408	\$0	\$0	\$0	\$0	\$0	\$0	\$0	\$0	\$0	\$0	\$255,400	\$0	\$1,021,600	\$0	\$1,277,000
SP1409	\$0	\$0	\$0	\$0	\$0	\$0	\$0	\$0	\$0	\$0	\$7,300	\$0	\$65,700	\$0	\$73,000
SP1410	\$0	\$0	\$0	\$0	\$0	\$0	\$0	\$0	\$0	\$0	\$40,000	\$0	\$160,000	\$0	\$200,000
SP1411	\$0	\$0	\$0	\$0	\$0	\$0	\$0	\$0	\$0	\$0	\$109,600	\$0	\$438,400	\$0	\$548,000
SP1415	\$734,000	\$0	\$0	\$0	\$0	\$84,000	\$0	\$0	\$0	\$184,000	\$42,800	\$0	\$87,200	\$0	\$1,132,000
SP1416	\$0	\$0	\$0	\$0	\$0	\$0	\$0	\$0	\$0	\$0	\$400	\$0	\$1,600	\$0	\$2,000
SP1501	\$0	\$0	\$0	\$0	\$0	\$0	\$0	\$0	\$0	\$0	\$75,200	\$0	\$300,800	\$0	\$376,000
SP1502	\$0	\$0	\$0	\$0	\$0	\$54,400	\$0	\$0	\$0	\$0	\$15,600	\$0	\$0	\$0	\$70,000
WI1301	\$0	\$0	\$0	\$0	\$0	\$0	\$0	\$0	\$0	\$0	\$1,000	\$0	\$4,000	\$0	\$5,000
WI1501	\$40,000	\$0	\$0	\$0	\$0	\$0	\$0	\$0	\$0	\$10,000	\$0	\$0	\$0	\$0	\$50,000
<b>SUBTOTAL</b>	<b>\$5,339,000</b>	<b>\$1,000,600</b>	<b>\$248,000</b>	<b>\$1,136,897</b>	<b>\$1,373,967</b>	<b>\$2,901,698</b>	<b>\$0</b>	<b>\$0</b>	<b>\$1,504,800</b>	<b>\$2,872,052</b>	<b>\$5,065,500</b>	<b>\$1,129,968</b>	<b>\$20,934,856</b>	<b>\$126,065</b>	<b>\$43,633,403</b>
<b>FY 2016</b>															
CC0901	\$0	\$0	\$0	\$0	\$0	\$0	\$0	\$0	\$0	\$0	\$400	\$0	\$1,600	\$0	\$2,000
CC1102	\$0	\$0	\$0	\$0	\$0	\$0	\$0	\$0	\$0	\$0	\$400	\$0	\$1,600	\$0	\$2,000
CC1601	\$0	\$1,800	\$0	\$0	\$0	\$0	\$0	\$0	\$0	\$0	\$200	\$0	\$0	\$0	\$2,000
GR1104	\$0	\$0	\$0	\$0	\$128,000	\$0	\$0	\$0	\$0	\$0	\$0	\$32,000	\$0	\$0	\$160,000
GR1309	\$290,848	\$0	\$0	\$0	\$0	\$0	\$0	\$0	\$0	\$72,712	\$0	\$0	\$0	\$0	\$363,560
GR1403	\$0	\$0	\$0	\$0	\$0	\$0	\$0	\$0	\$0	\$0	\$400	\$0	\$1,600	\$0	\$2,000
GR1408	\$0	\$0	\$150,400	\$0	\$0	\$0	\$0	\$0	\$0	\$0	\$302,800	\$0	\$1,060,800	\$0	\$1,514,000
GR1501	\$1,200,000	\$0	\$0	\$0	\$0	\$0	\$0	\$0	\$0	\$300,000	\$0	\$0	\$0	\$0	\$1,500,000
GR1601	\$0	\$0	\$0	\$0	\$0	\$0	\$0	\$0	\$320,000	\$80,000	\$0	\$0	\$0	\$0	\$400,000
GR1602	\$0	\$0	\$0	\$0	\$0	\$4,500	\$0	\$0	\$0	\$0	\$500	\$0	\$0	\$0	\$5,000
GR1603	\$0	\$1,800	\$0	\$0	\$0	\$0	\$0	\$0	\$0	\$0	\$200	\$0	\$0	\$0	\$2,000
MO1105	\$0	\$0	\$0	\$0	\$0	\$0	\$0	\$0	\$0	\$0	\$284,000	\$0	\$0	\$0	\$284,000
MO1201	\$0	\$65,800	\$0	\$0	\$0	\$0	\$0	\$0	\$0	\$0	\$8,200	\$0	\$0	\$0	\$74,000
MO1404	\$0	\$0	\$0	\$0	\$0	\$12,800	\$0	\$0	\$0	\$0	\$3,200	\$0	\$0	\$0	\$16,000
MO1505	\$0	\$0	\$0	\$800	\$0	\$0	\$0	\$0	\$0	\$0	\$200	\$0	\$0	\$0	\$1,000
MO1601	\$0	\$46,900	\$0	\$0	\$0	\$0	\$0	\$0	\$0	\$0	\$4,100	\$0	\$0	\$0	\$51,000
MO1603	\$300,000	\$0	\$0	\$0	\$0	\$0	\$0	\$0	\$0	\$75,000	\$134,600	\$0	\$538,400	\$0	\$1,048,000
MO1604	\$0	\$711,000	\$0	\$0	\$0	\$0	\$0	\$0	\$0	\$0	\$79,000	\$0	\$0	\$0	\$790,000
MO1605	\$0	\$0	\$0	\$0	\$0	\$0	\$0	\$0	\$0	\$0	\$37,800	\$0	\$151,200	\$0	\$189,000
MO1606	\$0	\$0	\$0	\$0	\$0	\$194,400	\$0	\$0	\$0	\$0	\$21,600	\$0	\$0	\$0	\$216,000
MO1607	\$0	\$0	\$0	\$0	\$0	\$8,000	\$0	\$0	\$0	\$0	\$2,000	\$0	\$0	\$0	\$10,000
MO1608	\$0	\$900	\$0	\$0	\$0	\$0	\$0	\$0	\$0	\$0	\$100	\$0	\$0	\$0	\$1,000
MO1609	\$0	\$0	\$0	\$0	\$0	\$0	\$0	\$0	\$0	\$0	\$2,000	\$0	\$8,000	\$0	\$10,000
MO1610	\$0	\$0	\$0	\$0	\$0	\$0	\$0	\$0	\$0	\$0	\$2,000	\$0	\$8,000	\$0	\$10,000
MO1611	\$0	\$0	\$0	\$0	\$0	\$0	\$0	\$0	\$0	\$0	\$2,000	\$0	\$8,000	\$0	\$10,000

FY 2016 continued on next page

**FINANCIAL SUMMARY**

**Roadways**

**YEARLY SUMMARY**

PROJECT	Federal									Local	State			Other	TOTAL
	FHWA (STP-U)	FHWA (SAFETY)	FHWA (BRIDGE)	FHWA (STP)	FHWA (130)	FHWA (NHPP)	FHWA (HPP)	FHWA (BRM)	FHWA (BRO)	LOCAL	MoDOT	MoDOT GCSA	MoDOT-AC	OTHER	
<b>FY 2016 continued</b>															
MO1612	\$0	\$0	\$0	\$0	\$0	\$5,600	\$0	\$0	\$0	\$0	\$1,400	\$0	\$0	\$0	\$7,000
MO1613	\$0	\$0	\$0	\$800	\$0	\$0	\$0	\$0	\$0	\$0	\$200	\$0	\$0	\$0	\$1,000
MO1614	\$0	\$0	\$0	\$1,600	\$0	\$0	\$0	\$0	\$0	\$0	\$400	\$0	\$0	\$0	\$2,000
MO1615	\$0	\$0	\$0	\$3,200	\$0	\$0	\$0	\$0	\$0	\$0	\$800	\$0	\$0	\$0	\$4,000
MO1616	\$0	\$0	\$0	\$0	\$0	\$10,400	\$0	\$0	\$0	\$0	\$2,600	\$0	\$0	\$0	\$13,000
MO1617	\$0	\$200,700	\$0	\$0	\$0	\$0	\$0	\$0	\$0	\$0	\$22,300	\$0	\$0	\$0	\$223,000
MO1618	\$0	\$156,600	\$0	\$0	\$0	\$0	\$0	\$0	\$0	\$0	\$17,400	\$0	\$0	\$0	\$174,000
MO1619	\$0	\$0	\$0	\$118,400	\$0	\$0	\$0	\$0	\$0	\$0	\$29,600	\$0	\$0	\$0	\$148,000
MO1705	\$0	\$0	\$0	\$1,600	\$0	\$0	\$0	\$0	\$0	\$0	\$400	\$0	\$0	\$0	\$2,000
NX0601	\$949,612	\$0	\$0	\$0	\$0	\$0	\$0	\$0	\$0	\$1,188,388	\$0	\$0	\$0	\$0	\$2,138,000
NX0906	\$1,307,001	\$0	\$0	\$0	\$0	\$0	\$0	\$0	\$0	\$326,750	\$344,200	\$0	\$1,376,800	\$0	\$3,354,751
OK1401	\$0	\$0	\$0	\$0	\$0	\$0	\$0	\$0	\$0	\$0	\$400	\$0	\$1,600	\$0	\$2,000
RG0901	\$0	\$0	\$0	\$0	\$0	\$0	\$0	\$0	\$0	\$0	\$400	\$0	\$1,600	\$0	\$2,000
RG1201	\$0	\$0	\$0	\$0	\$0	\$800	\$0	\$0	\$0	\$0	\$200	\$0	\$0	\$0	\$1,000
RP1401	\$0	\$0	\$0	\$0	\$0	\$178,400	\$0	\$0	\$0	\$0	\$44,600	\$0	\$0	\$0	\$223,000
RP1502	\$209,120	\$0	\$0	\$0	\$0	\$0	\$0	\$0	\$0	\$52,280	\$0	\$0	\$0	\$0	\$261,400
SP1018	\$0	\$0	\$4,726,400	\$0	\$0	\$0	\$0	\$0	\$0	\$0	\$1,181,600	\$0	\$0	\$0	\$5,908,000
SP1106	\$0	\$0	\$0	\$1,600	\$0	\$0	\$0	\$0	\$0	\$0	\$800	\$0	\$1,600	\$0	\$4,000
SP1109	\$391,612	\$0	\$0	\$0	\$2,250,000	\$255,200	\$0	\$0	\$0	\$0	\$754,624	\$750,000	\$0	\$343,000	\$4,744,436
SP1112	\$0	\$0	\$0	\$0	\$0	\$64,000	\$0	\$0	\$0	\$0	\$16,000	\$0	\$0	\$0	\$80,000
SP1204	\$0	\$0	\$0	\$0	\$0	\$1,600	\$0	\$0	\$0	\$0	\$400	\$0	\$0	\$0	\$2,000
SP1209	\$0	\$0	\$0	\$12,618	\$0	\$0	\$0	\$0	\$0	\$3,155	\$0	\$0	\$0	\$0	\$15,773
SP1321	\$10,000	\$0	\$0	\$0	\$0	\$0	\$0	\$0	\$0	\$3,984	\$0	\$0	\$0	\$0	\$13,984
SP1323	\$681,000	\$0	\$0	\$0	\$0	\$147,200	\$0	\$0	\$0	\$905,541	\$112,915	\$0	\$484,440	\$0	\$2,331,096
SP1401	\$0	\$0	\$0	\$0	\$0	\$20,800	\$0	\$0	\$0	\$0	\$5,200	\$0	\$0	\$0	\$26,000
SP1405	\$0	\$0	\$0	\$0	\$0	\$0	\$0	\$0	\$0	\$0	\$400	\$0	\$1,600	\$0	\$2,000
SP1409	\$0	\$258,000	\$0	\$0	\$0	\$7,257,000	\$0	\$0	\$0	\$0	\$835,000	\$0	\$0	\$0	\$8,350,000
SP1410	\$0	\$0	\$0	\$0	\$0	\$0	\$0	\$0	\$0	\$0	\$2,903,200	\$0	\$11,612,800	\$0	\$14,516,000
SP1415	\$0	\$0	\$0	\$0	\$0	\$218,000	\$0	\$0	\$0	\$0	\$54,000	\$0	\$0	\$0	\$272,000
SP1502	\$0	\$0	\$0	\$0	\$0	\$0	\$0	\$0	\$0	\$0	\$4,000	\$0	\$0	\$0	\$4,000
SP1601	\$0	\$0	\$0	\$0	\$0	\$281,600	\$0	\$0	\$0	\$0	\$70,400	\$0	\$0	\$0	\$352,000
SP1602	\$0	\$0	\$0	\$0	\$0	\$48,000	\$0	\$0	\$0	\$0	\$12,000	\$0	\$0	\$0	\$60,000
SP1603	\$1,114,589	\$0	\$0	\$0	\$0	\$1,201,921	\$0	\$0	\$0	\$0	\$300,480	\$0	\$0	\$0	\$2,616,990
SP1604	\$0	\$1,800	\$0	\$0	\$0	\$0	\$0	\$0	\$0	\$0	\$200	\$0	\$0	\$0	\$2,000
SP1605	\$0	\$0	\$0	\$0	\$0	\$0	\$0	\$731,651	\$0	\$468,349	\$0	\$0	\$0	\$0	\$1,200,000
WI1301	\$0	\$0	\$0	\$40,000	\$0	\$0	\$0	\$0	\$0	\$0	\$10,000	\$0	\$0	\$0	\$50,000
<b>SUBTOTAL</b>	<b>\$6,453,782</b>	<b>\$1,445,300</b>	<b>\$4,876,800</b>	<b>\$180,618</b>	<b>\$2,378,000</b>	<b>\$9,910,221</b>	<b>\$0</b>	<b>\$731,651</b>	<b>\$320,000</b>	<b>\$3,476,159</b>	<b>\$7,611,819</b>	<b>\$782,000</b>	<b>\$15,259,640</b>	<b>\$343,000</b>	<b>\$53,768,990</b>



**FINANCIAL SUMMARY**

**Roadways**

**YEARLY SUMMARY**

PROJECT	Federal									Local	State			Other	TOTAL
	FHWA (STP-U)	FHWA (SAFETY)	FHWA (BRIDGE)	FHWA (STP)	FHWA (130)	FHWA (NHPP)	FHWA (HPP)	FHWA (BRM)	FHWA (BRO)	LOCAL	MoDOT	MoDOT GCSA	MoDOT-AC	OTHER	
<b>FY 2017</b>															
CC0901	\$0	\$0	\$0	\$0	\$0	\$0	\$0	\$0	\$0	\$0	\$400	\$0	\$1,600	\$0	\$2,000
CC1102	\$0	\$0	\$0	\$0	\$0	\$0	\$0	\$0	\$0	\$0	\$400	\$0	\$1,600	\$0	\$2,000
CC1601	\$0	\$900	\$0	\$0	\$0	\$0	\$0	\$0	\$0	\$0	\$100	\$0	\$0	\$0	\$1,000
GR1403	\$0	\$0	\$0	\$0	\$0	\$0	\$0	\$0	\$0	\$0	\$400	\$0	\$1,600	\$0	\$2,000
GR1602	\$0	\$0	\$0	\$0	\$0	\$513,000	\$0	\$0	\$0	\$0	\$57,000	\$0	\$0	\$0	\$570,000
GR1603	\$0	\$900	\$0	\$0	\$0	\$0	\$0	\$0	\$0	\$0	\$100	\$0	\$0	\$0	\$1,000
MO1105	\$0	\$0	\$0	\$0	\$0	\$0	\$0	\$0	\$0	\$0	\$284,000	\$0	\$0	\$0	\$284,000
MO1404	\$0	\$0	\$0	\$0	\$0	\$207,200	\$0	\$0	\$0	\$0	\$51,800	\$0	\$0	\$0	\$259,000
MO1505	\$0	\$0	\$0	\$800	\$0	\$0	\$0	\$0	\$0	\$0	\$200	\$0	\$0	\$0	\$1,000
MO1607	\$0	\$0	\$0	\$0	\$0	\$8,000	\$0	\$0	\$0	\$0	\$2,000	\$0	\$0	\$0	\$10,000
MO1608	\$0	\$39,600	\$0	\$0	\$0	\$0	\$0	\$0	\$0	\$0	\$4,400	\$0	\$0	\$0	\$44,000
MO1609	\$0	\$0	\$0	\$0	\$0	\$0	\$0	\$0	\$0	\$0	\$2,000	\$0	\$8,000	\$0	\$10,000
MO1610	\$0	\$0	\$0	\$0	\$0	\$0	\$0	\$0	\$0	\$0	\$2,000	\$0	\$8,000	\$0	\$10,000
MO1611	\$0	\$0	\$0	\$0	\$0	\$0	\$0	\$0	\$0	\$0	\$2,000	\$0	\$8,000	\$0	\$10,000
MO1612	\$0	\$0	\$0	\$0	\$0	\$1,600	\$0	\$0	\$0	\$0	\$400	\$0	\$0	\$0	\$2,000
MO1613	\$0	\$0	\$0	\$800	\$0	\$0	\$0	\$0	\$0	\$0	\$200	\$0	\$0	\$0	\$1,000
MO1614	\$0	\$0	\$0	\$1,600	\$0	\$0	\$0	\$0	\$0	\$0	\$400	\$0	\$0	\$0	\$2,000
MO1615	\$0	\$0	\$0	\$1,600	\$0	\$0	\$0	\$0	\$0	\$0	\$400	\$0	\$0	\$0	\$2,000
MO1616	\$0	\$0	\$0	\$0	\$0	\$1,600	\$0	\$0	\$0	\$0	\$400	\$0	\$0	\$0	\$2,000
MO1617	\$0	\$1,800	\$0	\$0	\$0	\$0	\$0	\$0	\$0	\$0	\$200	\$0	\$0	\$0	\$2,000
MO1618	\$0	\$1,800	\$0	\$0	\$0	\$0	\$0	\$0	\$0	\$0	\$200	\$0	\$0	\$0	\$2,000
MO1619	\$0	\$0	\$0	\$1,600	\$0	\$0	\$0	\$0	\$0	\$0	\$400	\$0	\$0	\$0	\$2,000
MO1701	\$315,000	\$0	\$0	\$0	\$0	\$0	\$0	\$0	\$0	\$78,750	\$134,600	\$0	\$538,400	\$0	\$1,066,750
MO1705	\$0	\$0	\$0	\$155,200	\$0	\$0	\$0	\$0	\$0	\$0	\$38,800	\$0	\$0	\$0	\$194,000
OK1401	\$0	\$0	\$0	\$0	\$0	\$0	\$0	\$0	\$0	\$0	\$400	\$0	\$1,600	\$0	\$2,000
RG0901	\$0	\$0	\$0	\$0	\$0	\$0	\$0	\$0	\$0	\$0	\$400	\$0	\$1,600	\$0	\$2,000
RG1201	\$0	\$0	\$0	\$0	\$0	\$800	\$0	\$0	\$0	\$0	\$200	\$0	\$0	\$0	\$1,000
RP1502	\$1,702,503	\$0	\$0	\$0	\$0	\$0	\$0	\$0	\$0	\$496,128	\$0	\$0	\$0	\$0	\$2,198,631
SP1106	\$0	\$0	\$0	\$1,600	\$0	\$0	\$0	\$0	\$0	\$0	\$400	\$0	\$0	\$0	\$2,000
SP1112	\$0	\$0	\$0	\$0	\$0	\$144,000	\$0	\$0	\$0	\$0	\$36,000	\$0	\$0	\$0	\$180,000
SP1204	\$0	\$0	\$0	\$0	\$0	\$32,800	\$0	\$0	\$0	\$0	\$8,200	\$0	\$0	\$0	\$41,000
SP1401	\$0	\$0	\$0	\$0	\$0	\$405,200	\$0	\$0	\$0	\$0	\$100,800	\$0	\$0	\$0	\$506,000
SP1405	\$0	\$0	\$0	\$0	\$0	\$0	\$0	\$0	\$0	\$0	\$400	\$0	\$1,600	\$0	\$2,000
SP1415	\$1,089,292	\$0	\$0	\$0	\$0	\$1,373,908	\$0	\$0	\$0	\$271,823	\$343,977	\$0	\$0	\$0	\$3,079,000
SP1602	\$0	\$0	\$0	\$0	\$0	\$6,890,400	\$0	\$0	\$0	\$0	\$1,722,600	\$0	\$0	\$0	\$8,613,000
SP1604	\$0	\$900	\$0	\$0	\$0	\$0	\$0	\$0	\$0	\$0	\$100	\$0	\$0	\$0	\$1,000
WI1301	\$0	\$0	\$0	\$643,200	\$0	\$0	\$0	\$0	\$0	\$0	\$160,800	\$0	\$0	\$0	\$804,000
<b>SUBTOTAL</b>	<b>\$3,106,795</b>	<b>\$45,900</b>	<b>\$0</b>	<b>\$806,400</b>	<b>\$0</b>	<b>\$9,578,508</b>	<b>\$0</b>	<b>\$0</b>	<b>\$0</b>	<b>\$846,701</b>	<b>\$2,957,077</b>	<b>\$0</b>	<b>\$572,000</b>	<b>\$0</b>	<b>\$17,913,381</b>

**FINANCIAL SUMMARY**

**Roadways**

**YEARLY SUMMARY**

PROJECT	Federal									Local	State			Other	TOTAL
	FHWA (STP-U)	FHWA (SAFETY)	FHWA (BRIDGE)	FHWA (STP)	FHWA (130)	FHWA (NHPP)	FHWA (HPP)	FHWA (BRM)	FHWA (BRO)	LOCAL	MoDOT	MoDOT GCSA	MoDOT-AC	OTHER	
<b>FY 2018</b>															
CC0901	\$0	\$0	\$0	\$0	\$0	\$0	\$0	\$0	\$0	\$0	\$400	\$0	\$1,600	\$0	<b>\$2,000</b>
CC1102	\$0	\$0	\$0	\$0	\$0	\$0	\$0	\$0	\$0	\$0	\$400	\$0	\$1,600	\$0	<b>\$2,000</b>
GR1403	\$0	\$0	\$0	\$0	\$0	\$0	\$0	\$0	\$0	\$0	\$400	\$0	\$1,600	\$0	<b>\$2,000</b>
MO1105	\$0	\$0	\$0	\$0	\$0	\$0	\$0	\$0	\$0	\$0	\$284,000	\$0	\$0	\$0	<b>\$284,000</b>
MO1505	\$0	\$0	\$0	\$159,200	\$0	\$0	\$0	\$0	\$0	\$0	\$39,800	\$0	\$0	\$0	<b>\$199,000</b>
MO1607	\$0	\$0	\$0	\$0	\$0	\$24,800	\$0	\$0	\$0	\$0	\$6,200	\$0	\$0	\$0	<b>\$31,000</b>
MO1609	\$0	\$0	\$0	\$0	\$0	\$0	\$0	\$0	\$0	\$0	\$2,000	\$0	\$8,000	\$0	<b>\$10,000</b>
MO1610	\$0	\$0	\$0	\$0	\$0	\$0	\$0	\$0	\$0	\$0	\$2,000	\$0	\$8,000	\$0	<b>\$10,000</b>
MO1611	\$0	\$0	\$0	\$0	\$0	\$0	\$0	\$0	\$0	\$0	\$2,000	\$0	\$8,000	\$0	<b>\$10,000</b>
MO1801	\$331,000	\$0	\$0	\$0	\$0	\$0	\$0	\$0	\$0	\$82,750	\$134,600	\$0	\$538,400	\$0	<b>\$1,086,750</b>
OK1401	\$0	\$0	\$0	\$0	\$0	\$0	\$0	\$0	\$0	\$0	\$400	\$0	\$1,600	\$0	<b>\$2,000</b>
RG0901	\$0	\$0	\$0	\$0	\$0	\$0	\$0	\$0	\$0	\$0	\$400	\$0	\$1,600	\$0	<b>\$2,000</b>
RG1201	\$0	\$0	\$0	\$0	\$0	\$800	\$0	\$0	\$0	\$0	\$200	\$0	\$0	\$0	<b>\$1,000</b>
SP1106	\$0	\$0	\$0	\$1,289,600	\$0	\$0	\$0	\$0	\$0	\$1,179,000	\$297,400	\$0	\$0	\$0	<b>\$2,766,000</b>
SP1112	\$0	\$0	\$0	\$0	\$0	\$2,801,066	\$166,134	\$0	\$0	\$0	\$741,800	\$0	\$0	\$0	<b>\$3,709,000</b>
SP1204	\$0	\$0	\$0	\$0	\$0	\$717,400	\$0	\$0	\$0	\$0	\$179,400	\$0	\$0	\$0	<b>\$896,800</b>
SP1405	\$0	\$0	\$0	\$0	\$0	\$0	\$0	\$0	\$0	\$0	\$400	\$0	\$1,600	\$0	<b>\$2,000</b>
<b>SUBTOTAL</b>	<b>\$331,000</b>	<b>\$0</b>	<b>\$0</b>	<b>\$1,448,800</b>	<b>\$0</b>	<b>\$3,544,066</b>	<b>\$166,134</b>	<b>\$0</b>	<b>\$0</b>	<b>\$1,261,750</b>	<b>\$1,691,800</b>	<b>\$0</b>	<b>\$572,000</b>	<b>\$0</b>	<b>\$9,015,550</b>
<b>GRAND TOTAL</b>	<b>\$15,230,577</b>	<b>\$2,491,800</b>	<b>\$5,124,800</b>	<b>\$3,572,715</b>	<b>\$3,751,967</b>	<b>\$25,934,493</b>	<b>\$166,134</b>	<b>\$731,651</b>	<b>\$1,824,800</b>	<b>\$8,456,662</b>	<b>\$17,326,196</b>	<b>\$1,911,968</b>	<b>\$37,338,496</b>	<b>\$469,065</b>	<b>\$124,331,324</b>

**FINANCIAL CONSTRAINT**

**Roadways**

	Federal Funding Source										Local	MoDOT Programmed Funds	Other	State Operations and Maintenance	TOTAL
	STP-U	Safety	Bridge	STP	130	NHPP	HPP	BRM	BRO	TOTAL Federal Funds					
2015 Funds Programmed	\$5,339,000	\$1,000,600	\$248,000	\$1,136,897	\$1,373,967	\$2,901,698	\$0	\$0	\$1,504,800	\$13,504,962	\$2,872,052	\$27,130,324	\$126,065	\$6,525,006	<b>\$50,158,409</b>
2016 Funds Programmed	\$6,453,782	\$1,445,300	\$4,876,800	\$180,618	\$2,378,000	\$9,910,221	\$0	\$731,651	\$320,000	\$26,296,372	\$3,476,159	\$23,653,459	\$343,000	\$665,506	<b>\$54,434,496</b>
2017 Funds Programmed	\$3,106,795	\$45,900	\$0	\$806,400	\$0	\$9,578,508	\$0	\$0	\$0	\$13,537,603	\$846,701	\$3,529,077	\$0	\$6,788,616	<b>\$24,701,997</b>
2018 Funds Programmed	\$331,000	\$0	\$0	\$1,448,800	\$0	\$3,544,066	\$166,134	\$0	\$0	\$5,490,000	\$1,261,750	\$2,263,800	\$0	\$6,924,388	<b>\$15,939,938</b>
<b>Total</b>	<b>\$15,230,577</b>	<b>\$ 2,491,800</b>	<b>\$ 5,124,800</b>	<b>\$ 3,572,715</b>	<b>\$ 3,751,967</b>	<b>\$ 25,934,493</b>	<b>\$166,134</b>	<b>\$731,651</b>	<b>\$1,824,800</b>	<b>\$58,828,937</b>	<b>\$8,456,662</b>	<b>\$ 56,576,660</b>	<b>\$469,065</b>	<b>\$ 20,903,516</b>	<b>\$145,234,840</b>

	Prior Year	FY 2015	FY 2016	FY 2017	FY 2018	TOTAL
Available State and Federal Funding	\$24,201,377	\$27,240,000	\$25,680,000	\$8,750,000	\$8,090,000	<b>\$93,961,377</b>
Available Operations and Maintenance Funding	\$ -	\$6,525,006	\$665,506	\$6,788,616	\$6,924,388	<b>\$20,903,516</b>
Available Suballocated STP-U/Small Urban	\$23,213,240	\$5,410,663	\$5,414,570	\$4,599,063	\$4,599,063	<b>\$43,236,599</b>
Available Suballocated BRM	\$1,542,036	\$338,170	\$338,170	\$338,170	\$338,170	<b>\$2,894,716</b>
<b>TOTAL AVAILABLE FUNDING</b>	<b>\$48,956,653</b>	<b>\$39,513,839</b>	<b>\$32,098,246</b>	<b>\$20,475,849</b>	<b>\$19,951,621</b>	<b>\$160,996,208</b>
Prior Year Funding	\$ -	\$48,956,653	\$41,310,200	\$22,793,109	\$19,413,662	--
Programmed State and Federal Funding	\$ -	<b>(\$47,160,292)</b>	<b>(\$50,615,337)</b>	<b>(\$23,855,296)</b>	<b>(\$14,678,188)</b>	<b>(\$136,309,113)</b>
<b>TOTAL REMAINING</b>	<b>\$48,956,653</b>	<b>\$41,310,200</b>	<b>\$22,793,109</b>	<b>\$19,413,662</b>	<b>\$24,687,095</b>	<b>\$24,687,095</b>

Remaining State and Federal Funding	(\$6,213,643)
Remaining Suballocated STP-Urban/Small Urban	\$28,006,022
Remaining Suballocated BRM	\$2,894,716
<b>TOTAL REMAINING</b>	<b>\$24,687,095</b>